

**Municipal judges to speak
at Law Day Dinner May 1**
- see page 3

**Branch Brook Park photos
are displayed at library**
- see page 5

**Old and young participate
in annual Special Olympics**
- see page 9

The Belleville Times

Serving Belleville Since 1909

Thursday, April 13, 1985

35¢

Special Saturday classes begin

The Academically Talented Program in Belleville has been extended to include Saturday classes for third graders.

The 10-week program, which began last week, will be conducted through June 22.

Subjects covered in the Saturday program will include computer-mathematics and English. The computer-mathematics course will be taught by Belleville High School teacher Louis Scanzillo. The English course, which emphasizes composition, will be taught by Belleville High School teacher Sandra Gottheimer.

Overseeing the program will be Austin MacArthur, School 3 principal.

Youth program personnel selected

The Belleville Board of Education appointed two monitors and one program specialist to coordinate its Summer Youth Employment Program (SYEP).

Joseph Petrillo and Donald Mintz will receive \$10 per hour as part-time monitors for the program. Andrew Pascale will receive \$4 per hour as a part-time program specialist.

The employment program, which begins this month, will end in August. The program is funded through a SYEP Grant.

Commissioners adopt town budget

The Belleville Board of Commissioners adopted a \$15.6 million municipal budget last week, approving a five-point tax increase.

The 1985 budget increased five points from last year's \$14.6 budget. The increase means that township taxes will increase 5 cents on every \$100 of assessed property value, bringing the tax rate to \$1.65.

The budget, which reflects a 6.5 percent cap, also appropriates \$2,712,000 in capital projects. Monies will be used for street improvements, purchase of a computer system, fire engine, pumper, new ambulances, and improvements of water mains.

Matters in Brief

Board approves leave of absence

The Belleville Board of Education granted an additional child-rearing leave of absence for the school year 1985-86 to elementary librarian Joanne Kurtz.

Kurtz, presently on a child-rearing leave of absence, will receive the additional time off without pay, in accordance with the contractual agreement between the board of education and the Belleville Education Association.

Teacher denies sexual abuse charges

Belleville teacher Patrick Caporaso testified on his own behalf last week, denying charges that he sexually abused a former student 10 years ago.

John J. Sileo of Nutley, who is now 23 years old, made the accusations against Caporaso in November of 1983 after he was charged with sexually assaulting two teen-aged boys. He agreed to testify against Caporaso as part of a plea bargaining agreement.

The case, brought by the Belleville Board of Education, will determine whether Caporaso can continue teaching in the school system. No criminal charges were filed because the statute of limitations had expired.

'Lookalike' arrested in Belleville

A Belleville woman who resembled a fugitive from a Morris County homicide charge was arrested in connection with a Secaucus robbery last week.

The woman was believed to be Brenda LaCugna, one of the state's most-wanted criminals. However, the woman was not LaCugna, but Sherry Johnson. Johnson was charged with robbery and assault.

Belleville, Nutley and Secaucus police assisted in the arrest.

Investigators from the Morris County Prosecutor's Office said the two robbery victims identified LaCugna as the woman who robbed them. LaCugna jumped \$165,000 bail in May of 1983 after pleading guilty to aggravated manslaughter in the death of a Montville man.

Silver Lake Branch Library celebrates 20th anniversary of community service

By Michelle Jeannotte
Belleville residents and township officials celebrated the Silver Lake Branch Library's 20th year with an anniversary party last Sunday.

Through the efforts of the Belleville Library Board of Trustees and library trustee

Mrs. Richard Shafter, the branch library was dedicated Feb. 12, 1965.

"When people came to the library, they always complained about the distance they had to travel," Shafter said. "I decided to walk around town and visit the schools. I wanted to talk

about ideas with parents and principals."

Shafter also said that a letter from then Commissioner George F. Kiernan and a petition signed by 40 residents of the Rutan Estates area encouraged her to begin a survey of the needs for extended library service.

In her survey, Shafter talked to approximately 400 people, including teachers and other professionals, parents and children in the Silver Lake section. She also visited schools 2, 4 and 10 and St. Anthony's School.

Shafter began her survey with a visit to School 4 on Magnolia Street, the eventual site of the branch library. In her report filed with the library board, Shafter indicated a two-hour conference with Principal Spotts and two teachers, Mrs. Miller and Miss M. Murray who doubled as school librarians in the school's central library.

"All three of them uniformly expressed their opinion that there is a definite need for additional library facilities in their vicinity, especially for children," she stated.

"The school itself already has individual classroom libraries in addition to the central library," she said. "It is located in a large room which has ample shelf-space and a number of conveniently placed

reading and study tables."

In her report, Shafter indicated that only 138 out of 467 students in grades 1-6 were library members. She also said that those she spoke with were enthusiastic about the possibility of a branch library housed in the school, especially for students' use over the summer.

When Shafter talked with parents in the area, many of them complained that their children could not get to the public library because the bus did not travel as frequently on Saturdays as it did during the week.

Because of its closeness to School 4, Shafter visited St. Anthony's School next only to find that many of the students never used the public library. In her report, Shafter added that the school had a number of relatively well-supplied classroom libraries and one central library.

Schools 2 and 10 also had individual classroom libraries with adequate supplies of materials, Shafter said. However, administrators of St. Anthony's and schools 2 and 10 believed there was a definite need for a permanent branch library in the Silver Lake section.

In her report, Shafter in-

(Continued on page 13)



20th Anniversary - Members of the community celebrated the Silver Lake Branch Library's 20th anniversary this weekend. Among those attending were: Commissioner Ralph DiRuggiero (l-r), library trustee Joseph Casale, branch librarian Kathleen Mollica, library trustees Rev. Frederick Long and Mrs. Richard Shafter and School 4 Principal Pat Forte.

School board approves summer program for reinforcement of students' basic skills

By Michelle Jeannotte
A proposal for a basic skills summer school program was presented to the Belleville Board of Education at its Monday meeting.

Nicholas Petti, School 10 principal and director of basic skills, presented the proposal for a three-week, basic skills program for Belleville students.

The program, pending approval from the state and county, will be conducted mornings from July 1-23. Belleville students, grades 1-6, and those from St. Peter's School are eligible for the program, Petti said.

Selection to the program will be determined by a student's need as well as recommendations by teachers and principals. Students who have been in the basic skills program during the school year will also be eligible for the program. They will be

grouped according to their skills, Petti said.

Approximately 402 students were enrolled in the summer basic skills program last year, Petti said, adding that he expects a similar figure this year.

The program will cost a total of \$30,220 with \$21,820 in state funding and \$8,400 from the 1985-86 school board budget, Petti said. Monies will be used for supplies, transportation, and a school nurse who will be on call.

The program will emphasize a reinforcement of reading, math and writing skills learned during the school year, Petti said.

"The program will be a comprehensive three-week program which will insure students of the same hours of 'learning time' as last year's four-week program," Petti said. "We will be concentrating on an academic

program only."

Each child will receive a minimum of one hour of math, one hour of reading and one hour of writing. The math classes will cover addition, subtraction, division, multiplication, problem solving, measurement, numeration, and math concepts, Petti said. The reading classes will cover vocabulary identification and usage, communication skills, oral reading, and verbal and reading comprehension.

"Research has indicated that pupils who are enrolled in a summer program continue to show

improvement," he said, adding that students are better prepared for September classes. "We are meeting the children's needs."

The program will also include a computer awareness program which will utilize the use of computers in providing individualized instruction and immediate reinforcement, Petti said.

Sites for the program will be determined on the number of students enrolled. Last year, schools 3, 4 and 8 housed the summer school program.

Cherry Blossom Festival celebrated at local park

The annual Cherry Blossom Festival in Branch Brook Park is under way with a weekly schedule of events.

"East Meets West" is this year's theme with a focus on Japan and its culture. The honorary chairperson of the 1985 Cherry Blossom Committee is Hidetoshi Ukawa, consul general of Japan to the United States.

More than 500,000 people are expected to visit the Essex County park during the three-week period, said Essex County Executive Peter Shapiro.

Branch Brook Park is the oldest county park in the nation and was designed by Frederick Law Olmsted, designer of New York's Central Park. Over the years, the cherry blossoms have become one of New Jersey's most famous spring attractions.

Activities scheduled for the week include tours and outdoor concerts. An architectural tour of Newark's Cathedral of the Sacred Heart will be conducted

Saturday, April 20, at 1 and 2 p.m. at 89 Ridge St., Newark.

The 50th Daiko Drummers will perform Sunday, April 21 in Branch Brook Park (across from Clara Maass Medical Center) at noon. The 50th Anniversary of Newark's City Subway (celebrated in conjunction with the Cherry Blossom Festival) will also take place at noon.

Haiku poetry readings will be given at 2 p.m. on Sunday followed by the First Annual International Music Festival.

An outdoor jazz concert by Yoshiyuki Ono will be performed Wednesday, April 24 at noon in Washington Park.

The Fifth Annual Cherry Blossom Run will be conducted Sunday, April 28, the last day of activities. The 10-kilometer run will begin at 10 a.m. across from the Branch Brook Skating Arena. Pre-registration fee for Essex County residents is \$8.

(Continued on page 13)

German, Guerrero, Duess promoted at Spencer Savings

Charles R. Duess, president of Spencer Savings and Loan Association, has announced the recent promotions of three bank employees.

Helen German has been named secretary at the local savings and home financing institution.

A lifelong resident of Garfield and a graduate of Garfield High School, German joined

Spencer Savings in 1965 and has served in the Mortgage Servicing Department and most recently as an assistant secretary. She has also been secretary to the president since 1975, a position she will retain in addition to her new post as secretary of the association.

German has completed courses at the Institute of Financial Education as well as various

other financial, secretarial, adult education and computer

programming courses. She is also a member of the Women's

Association of Savings and Loan Institutions.

Jose B. Guerrero has been promoted to vice president and controller.

Guerrero is a graduate of East Side High School, Newark, and attended Bloomfield College. He joined Spencer Savings in 1979 as an internal auditor and in 1983 he advanced to the position of assistant vice president and controller.

A New Jersey public accountant, Guerrero is also a member of the Ironbound Business Association and Club Espana. He resides in Newark with his wife, Sara, and their two daughters, Ines and Anita.

Douglas C. Duess has been named vice president at the near \$500 million savings and home financing institution.

A graduate of Lodi High School, Duess attended Montclair State College and also completed courses with the Society of Real Estate Appraisers. He joined Spencer Savings in 1977 in the Mortgage Origination and Appraisal Department. In 1981 he was named an assistant vice president, the position he has held until this most recent appointment.

Duess is a member of the Society of Real Estate Appraisers, Chapter 113 and a member of the Veterans of Foreign Wars, Post 2867 in Garfield.

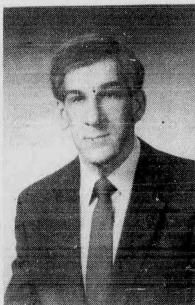
He lives in Lodi with his wife, Eileen, and their daughter, Karen.



Helen German



Jose Guerrero



Douglas C. Duess

Alan Brown Jr. to moderate poster session at convention

Alan Brown, Jr. of Belleville, speech-language pathologist for the Orange Board of Education, has been selected to moderate the Poster Session for the Video Forum Committee at New Jersey Speech-Language-Hearing Association Convention at Bally's Park Place Casino Hotel in Atlantic City April 25-27.

Brown, teacher of lipreading at Westfield Adult School for the past three years, is presently member of the Public School Affairs Committee of New Jersey Speech-Language-Hearing Association (NJSHA).

NJSHA is concerned with the care and treatment of people with communication disorders. Nearly 1,000 speech-language pathologists and audiologists from New

Jersey and other states are expected to attend this annual event.

Noted professionals will present a broad range of topics on state of the art information ranging from exploring the genetic basis for speech-language-hearing disorders and aspects of speech-language intervention for pre-school and school age children, to areas of adult-aging rehabilitation.

Some of the many other issues addressed are the latest in hearing aids, computerized fluency control for stuttering, cochlear implants, cancer in voice and speech, and tinnitus. There will be an extensive display of related exhibits, as well as professional and social activities.

For more information about the convention or speech and hearing services call 673-5567.

Oglethorpe scholars award to Chiusano

Joseph Chiusano, son of Mr. and Mrs. Joseph F. Chiusano of Belleville, has been chosen for an Oglethorpe Scholars Award at Oglethorpe University in Atlanta for the 1985-1986 academic year, according to Jonathan H. Jay, director of admissions.

Chiusano is currently attending Queen of Peace High School.

The Oglethorpe University scholarship program is designed to recognize outstanding academic achievement as demonstrated by high school performance, significantly above average SAT scores and recommendation. In addition, the recipients of the Oglethorpe Scholars Awards for Scholarship are selected for their leadership qualities, citizenship, participation in extracurricular activities and potential for success.

Oglethorpe University is a small, private, liberal arts university located in the suburbs of Atlanta.



Vincent Cozzarelli Reg. Ph.

PROPER STORAGE
Believe it or not, a medicine cabinet may well be the worst place in the house to store some medications. The high humidity of a bathroom can play havoc with capsules that are not tightly capped. Pills and capsules should be stored in a cool, dry place out of direct, bright light or sunlight. Pills that are exposed to moisture have a tendency to disintegrate and lose their potency. Most liquid antibiotics should be stored in the refrigerator to preserve the bacteria-fighting effectiveness of the medicine. Refrigeration, however, does not mean freezing. Freezing can change the molecular structure of the medicine and undermine its healing properties.

In addition to storing medications properly you should check the expiration date to be sure of its effectiveness. All types of prescription medications and over-the-counter drugs can be found at ROSSMORE PHARMACY, 338 Washington Ave., 759-1968, 759-1956. We also have a fine selection of Time Watches, transistor radios, cosmetics, greeting cards and candy for Mother's Day. Open: 9am-10pm daily, 9am-9pm Sundays.

HANDY HINT:
Chips, cracks and splits in pills and tablets are a sign of decay.

Another DeCarlo Listing!



Beautiful Nutley Cape!

Absolutely move in condition. 1st floor features living room, dining room, large eat in kitchen, 2 bedrooms & full bath. 2nd floor unfinished with large dormer can have 2 bedrooms and full bath. Full basement, 2 car garage. Asking \$120,000.00.

Ann DeCarlo

AGENCY/REALTOR
880 BROAD ST., BROOKDALE, BLOOMFIELD
748-5288



Frade's DELI

CATERING for ALL OCCASIONS

BEST YET! Lean Domestic Boiled Ham \$2.19 full lb.

SPECIAL! Home Baked Turkey Breast \$1.89 1/2 lb.

SUPER BUY Finlandia Swiss Cheese \$1.69 1/2 lb.

HOME MADE SALADS Grade A Extra Large EGGS 89¢ doz.

SAVE BIG! Gourmet Pure Water Swiss Process Decaffeinated Columbian Coffee \$4.59 lb.

Thumann's Bologna \$1.19 1/2 lb.

We Accept Food Stamps

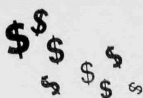
FREE DELIVERY Service

327 Union Ave. Belleville • 759-3509

1885 1985

100 Years of Uninterrupted Dividends

24 HOUR CAR LOANS



THE BEST DEAL ANYWHERE!

Drive away with a loan that's fast, friendly and affordable. In most cases the money can be yours in two business days or less. And you don't need an account with us to qualify.

1 FIRST DeWITT SAVINGS

AND LOAN ASSOCIATION

BELLEVILLE • BLOOMFIELD & CEDAR GROVE

TELEPHONE **751-2800** ALL OFFICES





Employees meet - H&R Block, Inc. recently held its 13th annual employee banquet at the Friar Tuck Inn in Cedar Grove. The affair, hosted by Bert Tobia, district manager, is conducted in an effort to bring employees from various offices together to meet one another and spend an enjoyable evening of food, fun and socializing. The banquet is held each year before the tax season rush. Representing the Belleville office were: John Mellilli (seated, left) Liz Ilaria, Joe Sysol, office supervisor, and Ruth Beltran (standing, left), Vicki Ann Raimo, Marie Piscipello and Belkis Vicioso.

Junior Woman's Club sponsors annual awards night April 22

The General Federation of Women's Clubs-Junior Woman's Club of Belleville will sponsor its annual Awards Night Monday, April 22, 7:15 p.m. at 51 Rossmore Place.

Two scholarships will be awarded for the "Outstanding Youth of Belleville" and winners of the poster contest for elementary school students will receive awards.

Prizes and trophies will also be presented to winners of the "Annual G.F.W.C. Junior Woman's Club of Belleville Poetry Contest."

Through various fund raisers, the Junior Woman's Club of Belleville has raised \$3,500 for charitable purposes for the 1984-85 term.

Members are currently preparing meals for the homeless and are sponsoring a child overseas for a year through Christian World Services.

Women between the ages of 18 and 35 interested in becoming a member of the Junior Woman's Club can call the membership chairperson at 751-4975.

School 5 dinner, show next Tuesday

School 5 is sponsoring its annual Dinner-Fashion Show Tuesday, April 23, 6:30 p.m. at The Fiesta, Route 17, Wood-Ridge. Tickets are \$15 and can be purchased at School 5, 149 Adelaide St. Thursday, April 18, from 9 a.m.-2:30 p.m.

Municipal judges will speak at OBC TV's Law Day dinner

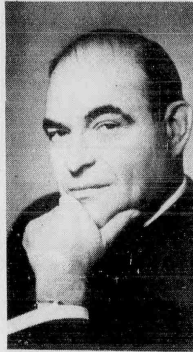
Orechio Broadcasting Company has scheduled a Law Day Dinner Celebration for Wednesday, May 1, 7 p.m. at The Chandelier Restaurant on Franklin Avenue in Belleville.

The guest speakers for the evening will be the municipal judges from Belleville, Nutley

and Bloomfield. Judges Edward Ambromson, Anthony Amoscato and Carl Stier will act as panelists in a discussion concerning the importance of the municipal court system today.

The public is invited to attend. A full dinner will be served with a choice of entree.

All monies will be donated to the Essex County Bar Association Scholarship Fund. Tickets, \$20 each, can be obtained from Orechio Broadcasting Company by calling 667-0077. They may also be obtained from the three co-chairpersons of the event, Nicholas Amato, Esq., 743-2222; Thomas P. Zampino, Esq., 284-1099; and Frank Cozzarelli, Esq., 751-4100.



Judge Edward Ambromson



Judge Carl Stier



Judge Anthony Amoscato

VIDEOTRONICS
473-8637

no membership no club to join

**3 TAPES FOR ANY
2 WEEKDAYS or
3 DAYS IN THE WEEKEND \$7.99**

| | |
|-----------------------------------|--|
| ANY TAPE \$1.99 per day | Wednesday Special RENT ONE TAPE \$1.99 GET A SECOND 99¢ FOR |
|-----------------------------------|--|

Thousands of Titles In Stock
* All Ratings *
Optional Membership Plan
We are "tuned in" to all your video needs

503 PAULISON AVENUE • SHOPRITE PLAZA • PASSAIC
MON.-FRI., SAT. 11AM-9PM; TUES., WED., THURS. 12NOON-9PM
SUN. 12NOON to 3 PM

Discover the new

1935 1985

SPECIAL 25¢ FARE

50th Anniversary
Celebration - Sunday, April 21, 12 Noon
Franklin Avenue Station in Belleville
and
Cherry Blossom Festival - Sunday, April 28
Frequent Service both days

To discover the Newark City Subway through our brochure just mail in the coupon below:

Mail to:
NJ Transit c/o Merritt Muller
107 Trumbull Street, Elizabeth, NJ 07206

Please send me a City Subway brochure.

Please check one:
☐ Current Rider
☐ Potential Rider

Name _____
 Address _____
 City _____
 State _____ Zip _____

N TRANSIT
NJ TRANSIT CORPORATION
BET 4/18

Sir Speedy
Printing Centers

THE INSTANT PRINTING PROFESSIONALS

QUALITY PRINTING
FAST AND PROFESSIONAL
Colored Inks and Paper in Stock

SERVICE
Free Pick-Up and Delivery
601 Bloomfield Ave.
Bloomfield, N.J.
748-8113

REALTY WORLD.

THE RESULTS PEOPLE.
BAUMGARDNER AGENCY

**SPECIALIZING IN RESIDENTIAL PROPERTY
FOR OVER 35 YEARS**

Services Offered:

- * REAL SAFE - Home Protection Plan
- * REAL LINE - National Referral Service
- * Appraisal Services and Insurance
- * Career Opportunities

Covering
Bloomfield - Glen Ridge - Nutley - Belleville
378 Broad Street, Bloomfield, N.J. 743-8382

**JAY BAUMGARDNER GRI
BROKER**

BODY DOUBLE

AVAILABLE AT:

GARY'S T.V. VIDEO
HOME ENTERTAINMENT CENTER
388 Washington Avenue, Belleville
759-2170

Hours: Monday through Friday
9 AM - 8 PM

Saturday
9 AM - 4 PM

The Belleville Times

Serving Belleville Since 1909 (USPS 049-220)

Published Every Thursday
At 155A Washington Ave.
Belleville, N.J. 07109

Annual Subscription \$12.00
Senior Citizens \$7.00

Second-Class Postage Paid
At Newark, N.J.
Postmaster: Send address
changes to The Belleville Times,
155A Washington Ave., Belleville, N.J. 07109

759-3200

Publisher: Frank A. Orechio
Assistant to the Publisher:
Michelle Jeannotte

D'Agostino/Linfante

The senior member of the Board of Education was elected its new President, Dr. Anthony D'Agostino. He succeeds former President Grace Purdue, who retired because of illness. D'Agostino served as Vice President last year and his promotion to President was by unanimous vote of the Board. D'Agostino is expected to provide the kind of leadership the community has come to enjoy at the firm hand of Grace Purdue. He has dedicated himself to continue the expanded communication efforts of Grace Purdue. D'Agostino also was pleased with the passage of the budget for "It makes my job a lot easier."

The Board chose well in electing Dr. D'Agostino to fill the office of President.

Board member Phil Linfante's nomination as Vice President was a surprise. A one-year member of the Board, Linfante's nomination was not unanimous — it was opposed by Trustee Gabe Nazzola who felt slighted because he was not nominated. Nazzola charged that the nomination of Linfante was based on politics and not education. Nazzola said that social affiliations play a part in deciding upon who gets nominations and positions

on the Board. Nazzola was Budget Committee Chairman and actively campaigned for adoption of the Budget — more so than any other School Board member.

Gabe Nazzola has a point. Second in seniority, more often than not, longevity played a part in the selection of School Board Officers.

Whether or not there is "too many politics on the Board" should be a major concern to parents and taxpayers in Belleville. If Gabe Nazzola's allegation is half true, the Belleville school system is in serious trouble. We hope not. Nazzola may know more than we do about politics interfering with the operation of our school system. If so, we would urge him to go public with his complaints — whenever politics interferes with the administration of the school system.

Frank Orechio

School Board Budget

Thank you, voters. You have sent the word forth beyond Belleville's boundaries that you really care to continue giving our students the opportunity for a quality education. You sent this message to the world by voting "Yes" on the School Board Budget. We compliment the voters on the good judgment — and the School Board trustees for the wisdom in producing a prudent document. There is no fat in the School Budget.

We have the assurance of the present School Board that it will continue the dialogue of parents and taxpayers expanded by former School Board President, Grace Purdue. Much credit for passage of the budget is to be given to School Board member Gabe Nazzola. Recognition of his efforts was made in comments by School Superintendent

Michael Nardiello. In further comments on the budget, Mr. Nardiello stated, "The budget won't be a tremendous plurality. Being a native of Belleville, I know that getting the budget passed is like pulling teeth. Maybe, we've changed that."

And, maybe, we have. For as long as School Board trustees act responsibly, there is a 50-50 chance that School Board Budgets will meet the acid test and receive the affirmative vote of our people.

Frank Orechio

Dry Milk Available

Tomorrow, Friday, April 19th, starting at 4 PM, at the Department of Public Affairs office, 383 Washington Avenue, dry milk will be distributed to Belleville residents only — free of charge — based upon the resident's family income. A resident may also be eligible if he or she is a beneficiary of one of the several aid programs, federal or state.

Public Affairs Commissioner Michael Pizzi, urges anyone who is the beneficiary of any public program to visit the Washington Avenue office and participate in the dry milk program. The day is

Friday, April 19th — and the distribution begins at 4 PM. If you think you are eligible — and you want to participate, we urge you to take advantage of the opportunity.

Frank Orechio

Why overlook Nazzola?

To the editor:

I am a parent of school children in Belleville, belong to the organization of my children's school, a homeowner and feel I am qualified to speak about my youngsters' education because of my involvement in it.

I'm now taking issue with an article (April 11) regarding the Belleville Board of Education reorganization along with the slate.

The passage of this year of the school's budget is the foundation for all the youngsters in Belleville and is one of "the good things happening in Belleville." But most importantly, this triumphant passage of this year's budget will give our youngsters in Belleville the tools needed for their education. I also extend my appreciation to the fine people in our community for their acceptance.

As newly elected president of the board of education so poignantly said, "It makes my job a lot easier" and "the administrators told us that they needed and we budgeted it." I would like to ask Dr. Anthony D'Agostino and the other board members if they were not aware of the extent of Mr. Gabe Nazzola's involvement on the preparations and presentations of this budget? Mr. Michael Nardiello, superintendent of the schools, also commented on the importance of passage... "the passage of the budget was mainly due to the efforts of Mr. Nazzola."

Then, it can't be so that our present board members were unaware of Mr. Nazzola's involvement in the budget. Why was he overlooked in consideration for the positions of president or vice president? As stated by Dr. D'Agostino and the other board members listen only when they have a mind to?

The schools' budget this year stood on its own merits, it sold itself. Bringing the awareness to the people is the second aspect. I am not certain that all Belleville people are aware that this is the second time that our school's budget was passed in 22 years. I am not certain that Belleville people understand that the first time it was passed in 1983, it was election year; our board of education then felt somehow obligated to draw monies totalling \$935,000 from surplus and guaranteeing no tax increase to our township people.

This strategy had a result — it cost us subsidies to our youngsters' education.

tion at that the state was obligated to cut funds because of cap formula calculations. Understandably, why would the state give money to a system that already appeared to have had an excess. Unlike the first time, the message this year was clear and our people understood — no political deals or tradeoffs.

To get back to why I am writing this letter, I would like to say that it seems quite peculiar that the board members who elected Mrs. Grace Purdue for two years as board president, which incidentally was never done before, did realize the accomplishments of this fine woman, yet felt so constrained during the reorganization of this board to overlook Mr. Nazzola's tenure on the board; overlook his accomplishments with the budget, be so contrary in its voting record for president or vice president of this body.

Regarding Mr. Nazzola's statement, "politics are alive and well on the board," why was Mr. Nazzola disturbed enough to make such a statement? Were his accomplishments (which are many) and merits overlooked because of who decides if his qualifications have merit? Could it be that Mr. Nazzola is a very thorough person wherever his involvement takes him in the causes and effects of education to our youngsters? Is he disturbed without reason? What is it, gentlemen — what really is it?

The criteria used by our board of education in electing a president and vice president of that body should be consistent. I am very interested to know what criteria was used this year for the chairmanships.

In closing, when working within an organization (non-profit), you must take "the resources" who serve you best to give the people you are serving. Their participation, accomplishments, achievements, efforts and time deserves them high praise and above all — recognition. Mr. Nazzola is such a resource that should have been given the opportunity to accept or decline the honor of chairmanship of that body. I question Dr. D'Agostino's and other board members' motives for not reaching for the resource that had so much to do with the foundation you work from — budget. Where do we go from here?

Mrs. Susan Cafone
74 Wilber St.
Belleville

Who are the politicians?

(Open letter to Gabe Nazzola:)

In reference to the article which appeared in The Belleville Times last week where you state that politics exist on the board of education. Why don't you come right out and say who the politicians are on the board?

Is it not true Mr. Nazzola, that you are presently trying to uproot the town chairman in the Republican Party in Belleville? That you are trying to get people to run for district leader so that your wife can be chairman or vice chairman of the Republican Party in Belleville?

You claim that you are the lone wolf on the board. Maybe there is a reason for that.

Is it also not true that you have an appointed position by the governor on the revitalization of the avenue? Isn't this political? Are you not trying now to get Mrs. M. a job in the school system? Isn't it true that you will be running for commissioner in the next election?

Isn't it true that you were on the school budget committee and you didn't change 5 cents of it? It was passed as proposed because the people wanted it passed and voted for it.

Mr. Nazzola, don't be a lone wolf. Tell the truth and be a dove and a man for our schools and children.

Name withheld by request

Golden Comments

by James R. Golden

Congressman James Florio's decision not to seek the Democratic Party nomination for Governor, notwithstanding his close loss to Governor Thomas Kean four years ago, has opened up a new ball game for the five candidates in the primary contest. Florio had been considered to have the front-runner had he chosen to seek the office.

The remaining candidates are Senate Major Leader John Russo (D-Ocean), who might not have entered the contest had Florio become a candidate, County Executive Peter Shapiro, former state Sen. Stephen Wiley, U.S. Attorney Robert Del Tufo and Newark Mayor Kenneth Gibson are all very happy that Florio decided to remain on the sidelines.

In political battles each candidate seeks the coveted designation in the media of front-runner because most campaign contributors don't want to spend their money on losers and political leaders haven't the "guts" to come out for candidates they don't feel will win, even though they may like the candidate and his program policies.

A sketch of the candidates'

background finds clout and political strength abounds among all five seeking the Democratic Party line in the fall election for the Governor's office.

In reverse order, from paragraph two, Newark Mayor Ken Gibson is the only candidate to go through this process before. He has about 100,000 people who voted for him in 1981 and will do it again this time. None of the others have that base. Former U.S. Attorney Bob Del Tufo is attempting to leap to the top rung by stressing his role in driving organized crime out of New Jersey.

Former State Sen. Wiley has the best organized and financed campaign and a resume of impressive nature. Essex County Executive Peter Shapiro is youthfully good looking and vigorous with Assembly Speaker Alan Karcher supporting him along with wealthy friends. Senate Majority Leader John Russo has spent 12 years in the Legislature and has the backing of many colleagues down there. He is also a front line Democrat. He exudes confidence and just might get the Jim Florio accolade which would make him a front-runner.

Question of The Week

By Stacy Wolf
Question: How do you feel about murderers walking out of prison after 15 years of incarceration?



Lorraine Martucci
biller
26 Union Pl.
Bloomfield

"I think it's disgraceful. I don't think anyone can put a value on a person's life. Life is the most precious thing, which can not be compensated. A 15 year term is a cop out. I believe in the death penalty.



Samuel Callari
electrician
168 Bloomfield Ave.
Nutley

"I feel the death sentence should be enforced more. These convicted sinners are getting treated to well. We've made our prisons into mock resorts, with all the programs they offer like educational and recreational plans. Make them do more community service.



Ann Callari
housewife
108 Bloomfield Ave.
Nutley

"I think it's awful because the lame excuse they use is that there is not enough space to keep all the prisoners. Why don't they build some prisons if they need so much space? The officials also wait so long to bring them to trial, that they end up getting much to lenient sentencing."



Rose Bianchi
retired
3A Jefferson St.
Belleville

"It's not fair at all. Someone convicted of murder should have to pay with their own life. I feel that murderers end up living in prison better than the public, whose taxes pay for their food and keep. I don't mean to be bitter, but I believe in an eye for an eye, and a tooth for a tooth. ques.

Flaherty photographs on exhibit at library

The photography of Gloria and Robert Flaherty, formerly of Belleville, is on exhibit this month at the Belleville Public Library, 221 Washington Ave.

Featured in the exhibit are many photographs of Branch Brook Park in its varying seasons. The exhibit can be viewed in the library's meeting room and in the main display case on the second floor.

Gloria Flaherty has been taking pictures since she was a child when her father gave her a brownie camera as a present. She has exhibited at the Ringwood Manor and the

Prudential Tri-State Photography Exhibition. Although her photography covers all subjects, she enjoys photographing animals and children.

Robert Flaherty has been taking pictures for 14 years and enjoys pictures of landscapes. He took many of the photographs of Branch Brook Park featured in the display. He has also exhibited in the Prudential Lobby in Newark and won honorable mention for special effects in the Woodbridge-South Plainfield Photography Show.



Photography Buffs - Gloria and Robert Flaherty, formerly of Belleville, stand in front of their display which features a variety of pictures of Branch Brook Park. The display is on exhibit at the library this month.

Hospice Inc. to honor Belleville volunteers

The Hospice Inc. will honor Belleville volunteers Mrs. C.P. Ward and Alice Ricci during National Volunteer Week, April 22-28.

The Hospice Inc. recognizes its volunteers as an integral part of the Hospice Program. Volunteers participate in such areas as fund raising, bereavement program, speaker's bureau,

public relations, administrative tasks and the patient-family care, whose main function is to provide a sense of emotional support, understanding and care for persons in the last phase of incurable illness.

For information on the work of The Hospice Inc. or becoming a volunteer, call 783-7879. Through the efforts of the volunteers, Hospice staff and the cooperation of the sponsoring Essex County hospitals, The Hospice Inc. will continue to care for patients and families in all of suburban Essex County and parts of Newark.

Belleville servicemen graduate, earn awards

Second Lt. Michael D. Rock, son of James K. and Jean D. Rock of 5 Terrace Place, has been awarded silver wings following graduation from U.S. Air Force navigator training at Mather Air Force Base, Calif.

Rock is a 1984 graduate of North Carolina A&T State University, Greensboro.

Tech. Sgt. Craig W. Davis, son of Loretto M. Davis of 409 Washington Ave., has graduated from an Air Force major command non-commissioned officer academy at Lackland Air Force Base, Texas.

The sergeant received advanced military leadership and management training.

Davis, a 1974 graduate of Belleville High School, is a law enforcement supervisor with the 14th Security Police Squadron at Columbus Air Force Base, Miss.

Airman William Tirado Jr., son of William and Josephine Tirado of 215 Belmont Ave., has been assigned to Keesler Air Force Base, Miss., after completing Air Force basic training.

During the six weeks at Lackland Air Force Base, Texas, the airman studied the Air Force mission, organization and customs, and received special training in human relations.

In addition, airmen who complete basic training earn credits toward an associate degree through the Community College of the Air Force.

Tirado, a 1984 Belleville High School graduate, will now receive specialized instruction in the air operations field.

Retarded citizens drive launched by Knights

The Belleville Knights of Columbus will sponsor their annual retarded citizens drive Thursday, April 25 to Sunday, April 28th. Past Grand Knight and General Chairman Frank Corbo said, "One of the most charitable undertakings of the Belleville Knights of Columbus Council 835, along with many other councils located in New Jersey, is the annual drive to raise money for retarded citizens."

Belleville Council sponsors the following: The Belleville Special Olympics, the Mal Condon Canteen, which meets in the Knights of Columbus rooms twice a month; and a local Scout troop

made up of retarded boys from the Essex County area; and Camp Fatima, a camp for retarded children staffed by qualified volunteers.

The money donated during this drive will enable these children to participate in field trips, camping, museum visits, and other activities. In addition, these funds also help to refurbish the camp living quarters and needed provisions.

We are again asking for your help and support in the 1985 drive. Donations to the Knights of Columbus Drive can be sent to 94 Bridge St., Belleville, 07109, c/o General Chairman Frank Corbo.

Pancake breakfast set April 28 at Holy Family

Members of the Youth Ministry of Holy Family Church, Nutley, will sponsor a Pancake Breakfast Sunday, April 28.

Breakfast will be served by the parish youth in Holy Family School cafeteria from 7:30 a.m.-12:30 p.m. The menu features orange juice, pancakes (all you

can eat), sausage and coffee, tea, or milk.

Tickets, \$2.50 for adults and \$1.50 for children, may be purchased at the door. Entrance to the cafeteria is at the corner of the school building on Brookline Avenue.

Mary Ann Carissimo, D.D.S.

takes pleasure in announcing the opening of her office for the practice of General Dentistry

184 Pompton Avenue, Verona, N.J.
Tel. 239-8315

Hours By Appointment

You've heard us on WCBS and WINS Radio

5 minutes via Rte. 21 Belleville Nutley
YOU can get the great deals on

HONDA PONTIAC or VOLVO

that have brought hundreds of people from ALL OVER the Tri-State area

City Motors
River Drive, at Rte. 21, Passaic Park
777-1600

VIVA LA NAILS

- Manicures
- Pedicures
- Tips & Wraps
- Cosmetics
- Cosmetic Makeovers
- Painless Hair Removal

5 James St.
Bloomfield, N.J.
(corner of Broad St.)

Call for Appointment
Phone 429-2994

MEAT & CHICKEN
ED-UP
The Dollar Stretcher

| | |
|--------------------------------------|------------------------------------|
| Split Chicken Breasts 99¢ | Filet Mignon \$1.99 lb. |
| Sirloin & Shell Steaks \$1.99 | Pork Chops Combo \$1.39 lb. |
| Legs w/Back or Thighs 49¢ | Ground Chuck \$1.49 lb. |
| Wings Drums 59¢ lb. | Chicken \$1.99 lb. |
| Cutlets 1 lb. | |

Full Line of Lamb and Veal

FREE 1 Dozen Extra Large EGGS With This Coupon

Open Mon. thru Fri. 8-6
Sat. 8:00-4 - Sun. 9-1
Parkway to Hazel St. Exit go to Crooks Ave. make right down to tracks make left 4 blocks on left.

235 W. Railway Ave.
Paterson
881-8900

DENTALLY SPEAKING

By Drs. James D. Mugila and Paul N. De Maio

Mrs. Z. of Nutley asks, "Could chewing incorrectly cause my stomach to get upset?"

The first place of digestion Mrs. Z. is in the mouth. Mechanically the food is broken down to smaller pieces. If by chewing incorrectly is meant that you are often swallowing large pieces of food then the burden is placed on the stomach. Nature intended our teeth to break the food down to small enough pieces so that the chemical action from our saliva & stomach secretion can further degrade the food on a molecular level. If you are having an upset stomach from too much acid being secreted by your stomach then quite possibly this could be related to your efficiency in chewing. I suggest you consult your physician or a gastroenterologist to make sure no medical problem exists.

Thank you for your inquiry

Send Inquires To:
Dentally Speaking
671 Franklin Avenue
Nutley, N.J. 07110
667-4421

TOWNE DELICATESSEN & CATERERS

650 JORALEMON ST. BELLEVILLE N.J.
751-3935

Week of April 18th thru April 22nd

Proudly Presents

THE DELI SPECIALS

STARRING

1/2 lb. HOME COOKED CHOICE ROAST BEEF
\$2.38

1/2 lb. KRAKUS IMPORTED POLISH HAM
\$1.56

1/2 lb. FINLANDIA IMPORTED SWISS
\$1.83

1/2 lb. HORMEL DiLUSSO GENOA SALAMI
\$2.31

Residential - Industrial - Commercial Catering
Join Our Free Sandwich Club

Member of Belleville Chamber of Commerce



"IT'S OUR MOST IMPORTANT INVESTMENT"

John V. Kelly, President

COMMUNITY SERVICE

Nutley Savings

MAIN OFFICE: 371 Franklin Avenue, Nutley, N.J. 07110 • Phone: 661-3200
BRANCH OFFICE: 221 Washington Street, Newark, N.J. 07102 • Phone: 623-7090

Events in the Area

Class of 1965 planning reunion

Belleville High School class of 1965 will hold a reunion 7:30 p.m. Nov. 2 at The Chandelier, Belleville. For information, Elaine Perna, 68 Freeman St., Roseland, 07068 or Bob Turken, 76 Dumont Ave., Clifton, 07013.

May reunion for class of 1935

Nutley High School's class of 1935 will hold a 50th reunion dinner May 4. June class call Fred Heidt, 667-4249. January class call Joe Laurie, 667-4199.

Bloomfield '38 seek classmates

Bloomfield High School classes of January and June 1938 seek members for a 47th reunion 7 p.m. to midnight May 26 at Russian Hall, Singac.

Fee of \$35 includes cocktail hour, hot and cold buffet, open bar, dancing and prizes. Contact Palmer DeAngelis, 301 Central Ave., West Caldwell, 07006 (January classes) and Mildred Tabor Loughlin, 174 Baldwin Place, Bloomfield, 07003 (June class.)

1935 classes planning reunion

Bloomfield Classes of January and June 1935 are planning a 50th reunion this September.

For information, write to Edith Cool, 28 Baldwin Place, Bloomfield, N.J., 07003 or call 743-0364.

Chinese auction at Elks lodge

Bloomfield Elks Lodge 788 Abused Children's Committee will hold a Chinese auction 7:30 p.m. April 18 at Glen Ridge Middle School, Bloomfield and Glen Ridge avenues.

Refreshments will be served. Donation is \$3. For tickets, call Terry Smith II at 743-2386.

St. Anthony's card party April 22

A "Spring Melody" card party is planned 7 p.m. April 22 by St. Anthony's Rosary Alt Society at St. Anthony's School, No. 7th Street, Belleville.

Donation is \$4.50 by advance sale only. There are no reserved seats and refreshments will be served. For tickets, call St. Anthony's rectory at 759-2882.

Dinner, fashions May 16 at Fiesta

Radcliffe School PTA has planned its second annual dinner fashion show 6:30 p.m. May 16 at The Fiesta, Woodridge.

Tickets are \$16 and are available through the school, 379 Bloomfield Ave., Nutley.

Bloomfield art show opens May 4

The Bloomfield Art League's annual "Town Paints" will be held May 4 on the town green, Broad Street at the center. Entry fee is \$5 and work will be received 8 to 10 a.m. the day of the show. Cash and merchandise will be awarded.

Open to all artists, the art show will feature photography, sculpture, watercolors and oils etc., everything except crafts. Rain date is May 5.

Teen suicide seminar April 24

Montclair Community Hospital will sponsor a seminar on preventing teen suicide 4 to 6 p.m. April 24 at the Montclair Woman's Club, 82 Union St. To register, send a check for \$5 by April 15 to Montclair Community Hospital, Community Relations Office, 120 Harrison Ave., Montclair, 07042.

The two-hour program uses a film, lecture, discussion groups and self-evaluation exercises to help participants recognize early warning signs of teen suicide and learn how to help in crisis situations.

Benefit softball game April 25

The Bloomfield PBA and FMBA will co-sponsor a benefit softball game at Pulaski Park 7:30 p.m. April 25. Tickets at \$1 apiece are available from township police officers and firefighters.

Proceeds will be used to offset the medical expenses of Ricky Piontek, a Sudden Infant Death Syndrome baby. Donations can also be sent to the police or fire departments, Municipal Plaza, Bloomfield, 07003, care Little Ricky Piontek.

Macaroni, meatballs April 27

St. Peter's Boy Scouts Troop 375 will sponsor its second annual macaroni and meatball dinner 6:30 p.m. April 27 at St. Peter's cafeteria, 152 William St., Belleville.

Adults are \$5, children under five are free. Call Rosemarie at 751-4595, Carmela at 759-1467 or Patty at 484-8458 for tickets and information.

Plant workshop planned May 1

A plant workshop, a "Green Thumb Get-Together," will be held 1 p.m. May 1 at the Bloomfield Civic Center, 84 Broad St.

Successful plant-growing, inside and outside, will be discussed. Gardeners are invited to share their knowledge and experience and learn from others. For more information, call the Bloomfield Division of Human Services at 743-4400, ext. 254.

Washington trip set for May

The Bloomfield Knights of Columbus and Columbiettes are planning a three-day trip to Washington, D.C. May 3, 4 and 5. Fee of \$95 per person, double occupancy, includes bus transportation, sightseeing and two nights lodging.

Reservations are limited. Call Rose Ruffalo at 743-8685.

Pancake breakfast April 28

Members of the Youth Ministry of Holy Family Church are sponsoring a pancake breakfast 7:30 a.m. to 12:30 p.m. April 28 at Holy Family School cafeteria. Entrance to the cafeteria is at the corner of the school building on Brookline Avenue, Nutley.

The menu features orange juice, all the pancakes you can eat, sausage and coffee, tea or milk. Tickets at \$2.50 for adults and \$1.50 for children may be purchased at the door.

Indoor flea market set April 20

St. Peter's Sports Association and St. Peter's Youth Group will hold an indoor flea market 10 a.m. to 4 p.m. April 20 at St. Peter's School, 152 William St., Belleville.

Table rental is \$12. For reservation forms, call Michele Kurash at 429-9361.

Sisters to be honored May 1

The Sisters of Charity of St. Mary's Parish will be honored 7 p.m. May 1 at a dinner at the Palace Restaurant, Kings Court, Lyndhurst. Tickets at \$15 may be purchased at the rectory or by calling 751-4352 or 667-0470.

Present and former members of the parish and community as well as alumni of St. Mary's School and former teachers and priests who have served in the parish are invited. The dinner will commemorate the 125th anniversary of the founding of the Sisters of Charity of St. Elizabeth.

St. Mary's flea market May 18

St. Mary's School and Home Association will hold its spring indoor flea market 10 a.m. to 5 p.m. May 18 in the church hall.

Table rental is \$15. For information, call 235-1100 or 284-1186.

Class of 1960 plans reunion

Bloomfield High School class of 1960 will hold its 25th reunion this year. For information, call Bloomfield High School or Sue Foran Sommease at 338-3712.

Melillo testimonial dinner set

Bloomfield Fire Chief Robert G. Melillo, a 24-year member of the department, will be honored May 4 at a testimonial dinner dance at the White Eagle Manor, 41 Broughton Ave.

A cocktail hour will be held 7 to 8 p.m. with dinner following and an open bar continues to 1 a.m. Tickets at \$30 per person must be paid by April 26. Limited reservations for tables of 10 are on a first come, first served basis. Call 743-4400, exts. 255, 256 9 a.m. to 4 p.m. Monday through Friday.

Checks, made payable to the Robert G. Melillo Testimonial Committee can be mailed to fire headquarters at 375 Franklin St.

St. Mary's registering students

St. Mary's Church, Nutley, will register students for religious education classes for the 1985-86 school term through May 15. Classes are held Sunday mornings 9 to 10:15 a.m. for grades one through eight. The school term runs from September through May.

To register a child or for further information, contact the religious education office at 667-8239 Monday through Friday 9 a.m. to 3 p.m.

Benefit fashion show April 25

A fashion show to benefit the American Cancer Society will be held 6 p.m. April 25 at Rosanna's Figure Salon, 117 Bloomfield Ave., Bloomfield. It is hosted by Liza's Fashion Inc., Upper Montclair.

There is no admission charge and refreshments will be served.

Rummage sale planned April 20

The Ladies Circle of Brookdale Reformed Church, 10 Bellevue Ave., Bloomfield, will hold a rummage sale 9 a.m. to 4 p.m. April 20. The church is located at the entrance to Brookdale Park.

Admission is free.

Library's indoor art show April 20

Belleville Public Library will hold an indoor art show 9:30 a.m. to 1 p.m. April 20. To register, call 759-9200.

The show is open to adult professional and non-professional artists as well as students in grades one to 12.

Rummage sale May 4 at St. Paul's

St. Paul's Congregational Church, corner of Franklin Avenue and St. Paul's Place, Nutley, will hold its annual rummage sale 10 a.m. to 4 p.m. May 4 in the church's Falconer Hall.

Clothing for the family, furniture, bric-a-brac, linens, toys, records, household items and books will be offered for sale. A \$2 bag sale will be held 3 to 4 p.m.

Dentist to address twin mothers

Dr. Stuart Doline, a pediatric dentist, will discuss dental health in children at the Essex County Mothers of Multiples meeting 8 p.m. April 25 at Holy Trinity Church, 307 Main St., West Orange.

Mothers of twins or more in Belleville, Bloomfield and Nutley are invited to attend. Call Judy Mitschke at 338-6458 for more information.

'Night at the Races' June 5

Clara Maass Medical Center is sponsoring a "Night at the Races" June 5 at the Meadowlands Racetrack. The fundraising event will benefit the Clara Maass Medical Center Maternity Care Program.

For tickets and further information, call the Clara Maass Medical Center Development Office at 450-2277.

Breast reconstruction discussion

Breast reconstruction will be discussed 7 p.m. April 23 in the Clara Maass Medical Center School of Nursing Auditorium, located behind the Clara Maass Professional Building, 50 Newark Ave., Belleville.

Speaker will be Dr. Vincent Giampapa, assistant attending in the Department of Surgery and a specialist in the field of plastic surgery.

The public is invited. Refreshments will be served. For more information, call (450-2267).

Service auction at Ner Tamid

Temple Ner Tamid, 936 Broad St., Bloomfield, will hold its second annual service auction 7:30 p.m. April 27 in the all-purpose room. Over 200 goods and services will be auctioned including a VCR, dinner at the Vista International in New York City, professional services, Giants and Generals football tickets, hotel accommodations and more.

A nominal donation of \$2 per person includes refreshments. The public is invited. For information, call the Temple office at 338-6482.

Flea market April 27 on the green

Bloomfield High School Girls' Athletic League will hold a flea market 10 a.m. to 4 p.m. April 27 on the Bloomfield town green. In the event of rain, the affair will be held in the high school cafeteria, State Street entrance.

Proceeds will be used for scholarships.

Parenting teens April 23, 30

A two session seminar, "Parenting Teens," will be offered 7:30 to 9 p.m. April 23 and 30 in the chapel of St. Paul's Congregational Church, Franklin Avenue at St. Paul's Place, Nutley. All age groups are welcome.

Libby Morley, who has a masters degree in social work and Margaret Stern, who has a masters degree in psychology, will lead the discussion. Both have worked with youth and family in this area.

The event is sponsored by St. Paul's Board of Christian Education. For more information, call the church office at 667-4812.

Lincoln School fashions May 1

Lincoln School PTA, Nutley, will sponsor its annual spring fashion show, "Girls Just Wanna Have Fun," May 1 at the Friar Tuck Inn, Cedar Grove. Fashions are by Fashion Bud of Nutley.

For tickets or information, call Phyllis at 661-0514.

Crafts fair May 11 in Clifton

The Barns Museum-Workshop committee is sponsoring a crafts fair, May Promenades, 10 a.m. to 5 p.m. May 11 on the grounds of Clifton City Hall.

Funds raised will be used to develop two structures on the site into an arts and sciences cultural center.

One hundred locations are available at \$25 each. Provide your own table. To reserve space and for further information, call Flo Nibbling at 546-1833 or Rita Cadornin at 777-4600, ext. 255.

Kingsland Manor open April 21

The Kingsland Trust will hold open house at Kingsland Manor, 3 Kingsland St., Nutley, 2 to 4 p.m. April 21 and continuing the third Sunday of each month.

Trust members will welcome guests and conduct tours through the homestead.

Park Methodist organ concert

Gordon Turk, recitalist and resident organist at the Great Auditorium in Ocean Grove, will present an organ concert at Park United Methodist Church, Park and Broad Streets, Bloomfield, 4 p.m. May 5.

Turk, who gives twice-weekly summer concerts at Ocean Grove, has planned a program that includes contemporary and popular organ selections. He will begin the concert with introductory remarks and give a narrative description of the music he will perform before each selection.

Rummage sale at Bethany set

Bethany Lutheran Church, New and Joralemon Streets, Belleville, will hold a rummage sale 7 to 9 p.m. April 18 and 10 a.m. to 2 p.m. April 19 in Beisler Hall at the church.

St. Peter's card party April 24

St. Peter's PTG and Rosary Society will hold its annual card party 7:30 p.m. April 24 at St. Peter's School, 152 William St., Belleville.

Tickets are \$3 per person. Refreshments will be served. For tickets, call Michele at 751-6379.

Breakfast at the Elks May 5

Bro. Anthony Ginnone is sponsoring a breakfast for the benefit of the Crippled Children's Committee 9 a.m. to 1 p.m. May 5 at Bloomfield Elks Lodge 788, 296 Bloomfield Ave. Tickets are \$3.

Diners will have a choice of French toast and sausage or scrambled eggs and sausage. For reservations, call Dan Robinson at 746-0804, George Bergner at 338-9282 or Art Whelan at 239-7279.

CAMEO OPTICS

BUY 1 PAIR GET 1 FREE

380 Main St., Belleville
Grand Union Shopping Center
751-4600

The Choice of the People

7 Days
24 Hours
Delicious
Salad Bar!
Italian
Specialties!
Steaks & Chops

All baking done on premises • Homemade pastries
Children's Menu Available
Special Breakfast Menu: 6-11 a.m.
Daily Businessman's Lunch: 11 a.m.-3 p.m. Salad Bar Open 11 a.m.-10 p.m.
ALC. CARTE and COMPLETE DINNER MENU

We're Always Open
WILLIE'S
DINER-RESTAURANT

9 State St., Bloomfield Call 748-7414



Susan Lopusnak - Jeffrey Mack

Susan Lopusnak to wed Jeffrey Mack next year

Mr. and Mrs. John Lopusnak of Belleville announce the engagement of their daughter, Susan, to Jeffrey Thomas Mack, son of Mr. and Mrs. Thomas Mack of Belleville.

The troth was made known Dec. 15. The wedding will be held in August of 1986.

Miss Lopusnak, an alumna of

Belleville High School and Wifred Academy, is with Franklin Station Haircutters, Nutley.

Mr. Mack, a graduate of Belleville High School and Rutgers University, Newark, is with Witco Chemical, Woodcliff Lake.

Visiting hours are changed at Mountainside Hospital

The medical surgical visiting hours at Mountainside Hospital have been changed and will remain in effect while the hospital undergoes major construction and renovations.

The new hours are 4 to 8 p.m. Mondays through Fridays and 1 to 8 p.m. Saturdays and Sundays. Visiting hours for the alcoholism treatment, pediatrics, obstetrics

and critical care units will remain unchanged.

Construction on the hospital's new parking deck is scheduled to begin in early May and will be completed in approximately nine months. Groundbreaking for the major hospital construction and renovation, made possible through the Second Century Building Campaign, is scheduled for June 6.

Friendly Visitors honor volunteers next week

In celebration of National Volunteer Week, April 21 to 27, the Friendly Visitors Program of Community Mental Health Services for Belleville, Bloomfield and Nutley will honor its 112 volunteers at the monthly volunteer meeting 2 p.m. April 25 at Fewsmith Presbyterian Church, 444 Union Ave., Belleville.

Volunteers in the program provide a vital service to homebound older adults in the community through daily phone calls and weekly home visits. During the past year, volunteers spent 6,000 hours bringing caring help to over 175 older adults living in Belleville, Bloomfield and Nutley. For some, who have no family in the area, the Friendly Visitor

volunteer provides an important link to the community and its resources. For most, feelings of loneliness that accompany isolation are eased by volunteers' frequent phone calls and visits.

The Friendly Visitors Program services are free with funding from the Essex County Division on Aging, the United Way of Bloomfield, the United Way of Essex and West Hudson and the Schumann Foundation.

Additional volunteers are needed to meet the increasing demands for services. Training and supervision are provided by the professional staff. Anyone interested in a challenging and rewarding volunteer experience may call 450-3135 for further information.

Miniature Art Show opens April 21 at Nutley Savings

The Miniature Art Society of New Jersey presents its 15th International Miniature Art Exhibition April 21 through May 3 at Nutley Savings and Loan Association, Lower Level, 371 Franklin Ave.

The exhibition and sale of work will be open 1 to 9 p.m. daily and Sundays, 1 to 5 p.m. Admission is free.

The juried show includes 302 artists representing 38 states, Washington, D.C., Canada, England and Australia. Over 1300 paintings and sculpture were submitted with 831 pieces meeting the society's high standards for exhibit.



First place - Robert J. Humphries of Belleville took first in landscape for his "Rustic Peace II" at a recent miniature art exhibition.

Suicide prevention seminar April 24 at local hospital

Suicide is the second leading cause of death among young people between 15 and 24. And hundreds of thousands more teenagers attempt suicide each year. Yet, many such tragedies can be prevented if educators and professionals recognize the danger signals.

Montclair Community Hospital will sponsor a seminar on preventing teen suicide 4 to 6

p.m. April 24 at the Montclair Women's Club, 82 Union St. The program, which is designed for educators, counselors, health professionals, social workers, police officers, the clergy and others who work with teenagers, is open to the public. Registration is \$5.

"Being aware of the signs can help save young lives," notes Diane Ryerson, ACSW, a professional social worker who developed an Adolescent Suicide Awareness Program (ASAP) which has been a model for programs in New Jersey and New York. Ryerson has been featured on national television, including the Phil Donahue Show, to describe the problems and warning signals that presage teen suicide.

Ryerson, director of the Adolescent Suicide Awareness Program of the So. Bergen Mental Health Center and Barbara King of ASAP will lead the seminar.



Ice-O-Rama - Loretta DeSantis of Belleville, president of the Essex Skating Club of N.J. and her husband, Anthony, will be skating in Ice-O-Rama at South Mountain Arena, West Orange, April 26, 27, 28 in a benefit performance for the United States Figure Skating Association Memorial Fund. The fund was established in 1961 in memory of the U.S. World Figure Skating Team, lost in a plane crash in Belgium. The fund provides scholarships to talented young skaters. For ticket prices and information, call 731-8205. Group discounts are available.

An Open Invitation To The Community

Clara Maass Medical Center presents
"BREAST RECONSTRUCTION"

With Guest Speaker:

Vincent C. Giampapa, M.D.
Assistant Attending in the Clara Maass Department of Surgery
A Specialist in the Field of Plastic Surgery

Tuesday, April 23, 1985
7:00 p.m.

In The Clara Maass Medical Center
School of Nursing Auditorium
located behind the Clara Maass Professional Building,
50 Newark Avenue, Belleville



For more information, contact the Clara Maass Public Relations Department at 450-2267

Refreshments Will Be Served

DR. S.P. FISCHER

Optomtrist

takes pleasure in announcing that

DR. THOMAS F. DORRITY JR.

Optomtrist

(member of the American Optometric Association Contact Lens Section)

is now associated with him in the

Practice of Optometry

500 Washington Avenue

Belleville, N.J. 07109

For appointment call: 751-2992

Eye Examinations

Contact Lenses

NUTLEY SAVINGS & LOAN ASSOCIATION IS PROUD TO HOST THE 15th ANNUAL

INTERNATIONAL EXHIBITION AND SALE OF THE MINIATURE ART SOCIETY OF NEW JERSEY

Daily
1 - 9 p.m.

Sundays
1 - 5 p.m.

April 21st
Through
May 5th

In The
Community
Room

Nutley Savings
& Loan
Building

371 Franklin
Avenue
Nutley

Nutley Savings
AND LOAN ASSOCIATION

MAIN OFFICE:
371 Franklin Avenue, Nutley, N.J. 07110 • Phone: 661-3200
BRANCH OFFICE:
221 Washington Street, Newark, N.J. 07102 • Phone: 623-7090



WATCH FOR
GRAND OPENING
Headquarters
For Hair +



UNISEX

SALON

OPENING SPECIAL

STYLE CUTS With Blowout (curling iron extra) **\$10 & up**

A Full Service Salon Featuring:

* Manicures * Waxing * Tips * Linen Wraps

"A Professional Staff ... Known For Personal Service!"
38 Meadowlands Pkwy. Secaucus, N.J.

Open Mon.-Tues.-Wed.- 9:30-7 Thurs. & Fri. 9:30-9 Sat. 9:30-6

NO APPOINTMENTS NECESSARY

867-9841

You can still prove to yourself how low Grand Union regular prices are.

Over a year ago Grand Union reduced their regular prices to match the lowest leading supermarket in your community. Every week since then we printed our regular prices in the Price Finder so you could check on them.

Prove it to yourself with the Price Finder; check all the specials in the Price Finder for Specials. Only at Grand Union.

Grand Union Consumer Price Finder

Grand Union is matching the lowest priced supermarket chain in your community.

Contains over 9,000 regular prices for your shopping comparison.

Grand Union Price Finder Specials

With the Specials Store, the Red Dots Shelf.

This booklet does not include deeply cut Grand Union Red Dot specials, which are even lower than the regular prices in this booklet, so prices should not be compared with limited specials of other supermarkets.

These Specials are just samples of the hundreds in the Price Finder for Specials!

| | | |
|--|--|--|
| <div>Assorted Flavors Holland Hall Ice Cream 129 Half Gal. Cont.</div> | <div>Grade 'A' Fresh Chicken Breast 199 Whole Boneless Skinless Lb.</div> | <div>Super GRAND UNION Coupon Regular or Caffeine Free Coke, Diet Coke or Tab 79¢ One 2-Ltr. Btl. <small>No Minimum Purchase Required With This Coupon. Good Apr. 14 Thru Apr. 20. Limit One Coupon Per Customer.</small></div> |
| <div>Fresh Western Grain Fed Pork Loin Roast 99¢ Rib End Portion By The Piece Lb.</div> | <div>Automatic Drip or Electric Perk Folger's Coffee 199 1-Lb. Vacuum Bag</div> | <div>Super GRAND UNION Coupon Chilled Sunkist Orange Juice 139 One Half Gal. Cont. <small>No Minimum Purchase Required With This Coupon. Good Apr. 14 Thru Apr. 20. Limit One Coupon Per Customer.</small></div> |
| <div>Clear or Natural Red Apple Juice 139 Half Gal. Btl.</div> | <div>Rigatoni, Medium Shells or Regular or Thin Ronzoni Spaghetti 2 100 1-Lb. Pkgs.</div> | <div>Regular or No Salt Added Del Monte Tomato Sauce 6 100 8-oz. Cans</div> |

| THE BUTCHER BLOCK | | PRODUCE | | GROCERIES | |
|--|---|---|---|---|--|
| <div>Fresh Western Pork Loin Center Cut Pork Chops 159 Regular or Thick Cut Lb.</div> | <div>U.S.D.A. Choice Beef Boneless Chuck Roast 167 Lb.</div> | <div>Black Ribier or Emperor Red Grapes 89¢ Lb.</div> | <div>Regular Mott's Applesauce 99¢ 35-oz. Jar</div> | <div>Lemon Fresh Joy Liquid Dish Detergent 129 1-Pt. 6-oz. Cont.</div> | <div>Seven-Up 6-Pack 199 Regular or Diet 12-oz. Cans</div> |
| <div>Pork Roast Loin End Portion 109 Lb. Pork Loin Roast 119 Lb. Pork Rib Side 4 to 6 Lbs. 129 Lb. Pork Loin Side 4 to 6 Lbs. 129 Lb. Veal Cutlets Italian Style 699 Lb. Veal for Stew 249 Lb.</div> | <div>Chuck Steak First Cut 119 Lb. Chuck Roast 149 Lb. Ground Chuck 169 Lb. WHOLESALE SAVINGS Tenderloin Whole 399 Lb.</div> | <div>Fresh Spinach 79¢ Lb. Grapefruit 4 For 99¢ Each Artichokes 79¢ Each Strawberries 179 1 Qt. Bskt. Cucumbers 4 For 99¢ Each</div> | <div>Applesauce 99¢ 2-Lb. 3-oz. Jar Red Cabbage 2 For 99¢ 1-Lb. Jars Towels Vanity Fair 59¢ 100 Sheet Roll Star-Kist Tuna 99¢ 6.5-oz. Can Bath Tissue Vanity Fair 129 Pkg. of 6 Rolls</div> | <div>Sauerkraut 2 For 87¢ 1-Lb. Cans Bubble Yum Gum 85¢ 5-Pack Cheese Twists 89¢ 8-oz. Pkg. Baby Ruth 6-Pack 159 Candy Bars 13.6-oz. Pkg.</div> | |
| THE CORNER DELI | | THE BIG FREEZER | | DATE-LINE DAIRY | |
| <div>Ham Honey Cured 199 Half lb. Swiss Cheese 189 Half lb. Russer's Bologna 139 Half lb.</div> | <div>Vegetables California Blend 79¢ 1-Lb. Pkg. Coffee Rich 2 For 79¢ 1-Lb. Cans. Ice Cream Slices 199 12.5-oz. Pkg.</div> | <div>French Toast 98¢ 9-oz. Pkg. Spaghetti 179 10 1/2-oz. Pkg. Breyers Ice Cream 99¢ 1-Pt. Cont.</div> | <div>Sour Cream 99¢ 1-Lb. Cont. Grapefruit Juice 137 Half Gal. Btl. Cottage Cheese 99¢ 1-Lb. Pkg.</div> | <div>Colgate Toothpaste 159 6.4-oz. Tube Alka Seltzer 169 Pkg. of 25 Speed Stick 179 2.5-oz. Cont.</div> | |
| <div>GRAND UNION Coupon 15¢ Off With This Coupon And Purchase Of One 8-oz. Pkg. Lightly Salted or Sweet Qtrs. Breakstone Butter Coupon Good Apr. 14 Thru Apr. 20. Limit One Coupon Per Customer.</div> | | <div>GRAND UNION Coupon 20¢ Off With This Coupon And Purchase Of One Half Gal. Btl. Apple & Eve Apple Juice Coupon Good Apr. 14 Thru Apr. 20. Limit One Coupon Per Customer.</div> | | <div>GRAND UNION Coupon 10¢ Off With This Coupon And Purchase Of One Pkg. of 50 Kleenex Dinner Napkins Coupon Good Apr. 14 Thru Apr. 20. Limit One Coupon Per Customer.</div> | |

'Special' people participate in Belleville's annual olympics



Special People - Both old and young participated in the Special Olympics sponsored by the Belleville Special Education Parent-Professional Organization last Saturday. Parents and township officials (including Commissioner Ralph DiRuggiero, Belleville High School Principal Joseph Ciccone and Mayor Michael Marotti, below) were put to the test against the youngsters in a variety of activities. Winners of each race were awarded with gold, bronze and silver medals, while the adults received ribbons for their participation. - Photos by Michelle Jeannotte.



Where To Dine

Big Screen TV Sports Channel
Rick's
 Open Seven Days
 Casual Dining In A Relaxed Atmosphere
 778-7100
 550 Allwood Rd. Circle, Clifton

Thursday is Seafood Night
 Sunday Brunch
 Major Credit Cards Accepted

Ty's
 RESTAURANT PUB
 Lunch Served 11-3
 Dinner Served 5-10 Mon-Thurs
 5-11 Fri & Sat
 Snacks Served Till Midnight
 Off Van Houten Ave.
 66 Mt. Prospect Ave.
 Clifton, N.J. 777-0233

Armando Di Villa
 RISTORANTE
 HOSTED BY ONOFRIO
 EXQUISITE ITALIAN CUISINE
 Come and dine in our new exquisitely remodeled surroundings.
 We'll cater to any size party. Call for your special occasion - wedding, bar mitzvah, birthday or anniversary.
 R.S.V.P. Required 667-8899
 800 Bloomfield Ave. Nutley, N.J.

LEE'S Hawaiian Islander
 Mon., Tues., Wed. 5-10 p.m.
 Smorgas - Luau
 All you can eat \$29.25
 768 Stuyvesant Ave. Lyndhurst 939-3777
 635 Lexington Ave. Clifton 478-1977

WILLIE'S
 Diner - Restaurant
 9 State St., Bloomfield 748-7414
 Open 7 Days 24 Hours
 Italian Specialties!
 Steaks & Chops
 Delicious Salad Bar - Homemade Pastries



Rick's Pub Reviewed

by Lisa A. Grimaldi

Rick's Pub is a small, intimate gathering place, located at the Allwood traffic circle in Clifton, where Allwood Road and Bloomfield Avenue meet. The atmosphere is warm, friendly and casual. The menu is quite diverse, where you can get a great hamburger or sandwich, or a full-course gourmet meal.

We started our meal with a mixed basket of vegetables. The mushroom, zucchini, and cauliflower were delicately deep-fried and served with a creamy horseradish dip. The order was large, and more than enough for two to share.

For dinner, I tried the special of the day, Shrimp Scampi. The shrimp were large, garlicky, and cooked to perfection; served over a generous portion of linguine, which obviously, from its fresh texture, had been cooked to order.

The Zuppa di Clams, another special, was also served over linguine. It consisted of a dozen and a half tender littleneck clams in a delicious red sauce.

Both entrees were splendid enough in their own right, but the highlight of both meals was the accompanying dinner salads. Rick's salad is certainly not the run of the mill iceberg lettuce and tomato that seems to be standard fare in most restaurants. Their dinner salad, which is served in a large glass bowl, consists of two kinds of lettuce, shredded carrots and cabbage, ripe tomatoes, and crunchy water chestnuts, topped off with crumbled cheddar cheese.

For dessert, we chose the deep dish apple from Rick's tempting array of sweets. It was served piping hot, and was deliciously full of fruit.

The service was impeccable. Our waitress kept atop of every customer she served, although the pub was packed to capacity.

Rick's also serves lighter meals, such as omelettes, salads, and sandwiches for lunch, dinner and late night snacks. They are open Monday through Thursday, 11:30 AM till 12 midnight, Fridays and Saturdays 11:30 till 2 AM and on Sundays, Rick's fabulous Brunch is served from 11 till 2; the regular menu is available from 2:30 till 11 PM on Sundays. All menu items are moderately priced.

Seating capacity is 150. Private parties can be arranged. There is a separate room for non-smokers, and Rick's bar is a popular spot during Happy Hour and on late evenings. Reservations for meals are recommended. The address is 550 Allwood Road, Clifton. Phone number is 778-7100.

The FEEDBAG FAMILY SALOON
 36 Broad St.
 Bloomfield (Bloomfield Center)
 745-7206
 A feedbag is a pizza dough baked around fresh tomato sauce, cheese, onions, peppers, and your choice of over 20 of your favorite meat and fresh vegetable fillings.
 OPEN MON THRU SAT FOR LUNCH AND DINNER AND LATE NIGHT SNACKS

PEKING CHINESE RESTAURANT
 New Management • New Menu • New Atmosphere
 We Will Prepare Your Food As Spicy Or As Mild As You Wish
 591 Bloomfield Ave.
 Bloomfield, N.J. Open 7 Days 429-0124

PROUD MARY'S Restaurant - Lounge
PROUD MARY'S
 409 Franklin St.
 Bloomfield 429-9246

Karpen's Deli Restaurant
 473-6408
 Breakfast • Lunch • Dinner
 Mon.-Fri. 9-8 Sat. & Sun. 8-8
 1115 Bloomfield Ave. Clifton
 Northern N.J.'s Finest Sandwich Shop

FIVE 5 SPICE
 CHINESE CATERING

A Feast You Can't Forget
 Exquisite Banquets and Dim Sum elegantly catered to your home or office.
 Dumplings, 5-Spice Shrimp, Hunan Noodles, Award winning desserts.
 Call 201-472-5857

**DRIVE A LITTLE -
SAVE A LOT!**
15¢ per mile
with purchase

GRAND OPENING EXTRAVAGANZA

**OUT OF TOWN!
CALL COLLECT**
(201) 748-6902

CATTLEMAN'S FREEZER BEEF

WHEN ONLY THE BEST WILL DO

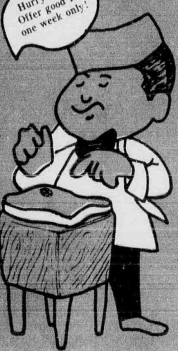
SPRING TIME COOKOUT SPECIALS JUST SAY CHARGE IT!

NO MONEY DOWN, NO PAYMENT FOR 30 DAYS
120 DAYS SAME AS CASH, NO INTEREST or FINANCE CHARGE

**FREE
12 NEW YORK
STRIP STEAKS**
(Based on 2 oz. portions)
To The First 20
Customers Opening
An Account
(Purchase Required)

**FREE
50 RIBEYE STEAKS**
(Based on 2 oz. portions)
to the FIRST 100 customers
CALLING IN TODAY
748-6902
IF LINES ARE BUSY
KEEP CALLING
PURCHASE REQUIRED

Hurry folks!
Offer good for
one week only!



EXAMPLE ONLY USDA CHOICE SPECIAL #1

300 LBS. FOR ONLY \$59⁵⁰
per month
for 4 months

USDA CHOICE & PRIME

- Sirloin steaks
- Porterhouse steaks
- T-Bone steaks
- Club Steaks
- Rib Steaks
- Bar-B-Q Ribs
- Filets
- Strip Steaks
- Rib Eye Steaks
- Sirloin Tip steaks
- Standing Rib Roast
- English Cut Roast

Ground Beef
& more

100 lbs.

**YOU RECEIVE
THIS AND THIS**

BONUS PACK

- 40 lbs. GRADE A FRYERS
- 10 lbs. LEAN PORK CHOPS
- 10 lbs. SLICED BACON
- 20 lbs. All Meat HOTDOGS
- 20 lbs. SAUSAGE

ABSOLUTELY NO CHARGE
100 lbs. bonus
with USDA
choice special
#1

200 lbs. loin, rib, plates & flanks at \$1.19
lb. equal \$238.00 plus free 100 lb. bonus
pack. Average weights 200 to 550 lbs.
Includes sections 1c, 1b, 3e, 3f, 3g.

**USDA CHOICE & PRIME
SPECIAL NO. 2**
225 lbs. \$51⁵⁶
per payment
for 4 payments

- T-bone steaks
- Strip steaks
- Sirloin Steaks
- Porterhouse Steaks
- Round Steak
- Strip Roast
- Sirloin Tip Roast
- Filet Mignon
- Ground Beef
- & more

YIELD 3

EXAMPLE
160 lbs. at \$1.25
equal \$200.25 plus
free 60 lb. bonus
pack. Average
weights 165 to 400
lbs. including sec-
tions 1a, 1b, 3e, 3f,
3g.

**PLUS
THIS
60 lb.
BONUS
USDA GRADE A**

- 20 lbs. chicken
- 20 lbs. sausage
- 15 lbs. hot dogs
- 15 lbs. picnic ham

Bonus No. 2 no charge
with Special

**PLUS
THIS
25 lb.
BONUS
USDA GRADE A**

- 12 lbs. chicken
- 5 lbs. bacon
- 5 lbs. hot dogs
- 3 lbs. pork chops

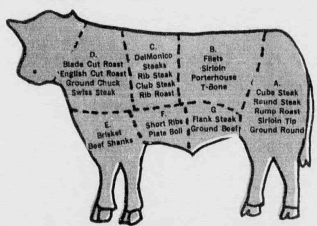
Bonus No. 3 no charge
with Special

**USDA CHOICE & PRIME
SPECIAL NO. 3**
175 lbs. \$40⁸⁸
per payment
for 4 payments

- Chuck steaks
- Rib Steaks
- Rib Roast
- Short Ribs
- Bar-B-Q steaks
- Chuck steak
- Sirloin steak
- Chuck Roast
- Pot Roast
- Ground Chuck
- & more

YIELD 3

EXAMPLE
150 lb. forequarter
at \$1.09 equals
\$163.50 plus free 25
lb. bonus pack.
Average weights 150
to 400 lbs. includes
sections 1d, 1c, 3e,
3f, 3g.



**FREE
BARBECUE GRILL**

To the first 10 customers
ordering 500 lbs. or more
(purchase required)

NOTICE!
Watch your beef cut and wrapped
while you wait. Charge if! No
money down. 120 days same as cash.

**FREE Introductory Offer
FROZEN VEGETABLES**

- 10 LBS. Cauliflower
- 10 LBS. Carrots
- 10 LBS. Corn
- 10 LBS. Mixed Vegetables
- 10 LBS. Peas
- 10 LBS. Broccoli

Up to 100 lbs. With Beef Order
Mix And Match With Any Bonus Pack

**EXECUTIVE SPECIALS
USDA CHOICE OR PRIME**

50 lbs.
ONLY **\$249⁵⁰**

T-BONE, NEW YORK STRIPS, SIRLOINS, K.C. STRIPS, FILET
MIGNONS, RIB EYES, DELMONICO, CLUB STEAK,
CHATEAUBRANDS.

AVERAGE WTS. 50 LBS. TO 125 LBS.

**U.S.D.A. CHOICE
and PRIME CUTS**

\$2⁴⁹ lb. - \$6⁹⁹ lb.

Pre-Trimmed
Steak and Roast Orders
Priced For Volume
Buying

Information on buying in quantity.
1. Small processing charge on all orders 20 lb.
2. All beef USDA inspected and graded. You take no changes on tough or flavorless
meat!
3. All beef is weighed, cut and wrapped by experienced personnel to your
specifications! All beef sold subject to gross hanging weight and subject to loss,
and weights available at time of purchase.
4. All orders include extra plates and flanks for ground beef and soup cuts.

HOURS:
Mon. - Fri. 10 to 8 p.m.
Sat. & Sun. 9 to 6 p.m.

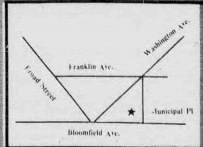
All beef cut on premises by appointment only. All total dollar prices based on minimum
weights. All orders include extra plates and flanks for ground beef and soup cuts. All beef
sold by hanging weight subject to trim loss. All free items with purchase. Examples are
examples only. Beef weights will vary as beef is not a manufactured item.

CATTLEMAN'S FREEZER BEEF

When Only The Best Will Do

**563 Bloomfield Ave., Bloomfield
748-6902**

MEMBER
BLOOMFIELD
CHAMBER OF
COMMERCE



Belleville Times SPORTS

Lady Bucs stop Ridgewood, take first spot in Essex County

Posting perhaps its biggest victory in two years, the Belleville softball team stopped perennial powerhouse Ridgewood, 4-3 and defeated conference rival Paramus, 6-4. The girls are now 6-1 on the season and ranked number one in Essex County.

The girls battled Teaneck last Monday and will host Paramus Catholic tomorrow afternoon, starting at 4 p.m. from Clearmont Field. On Saturday the team travels to Livingston for an 11 a.m. start and next Monday will host Hackensack, also at 11. Next Wednesday, the NNJL Essex-Passaic division play gets underway with a game against Bloomfield, at Clearmont Field, starting at 11 a.m.

Carl Corino was very happy with the victory over Ridgewood. "That was a big one," the coach said. "We played a nice game and it was nice to beat them, especially on the road. They defeated us twice last year and this was a big win for us. Ridgewood has a good team, as usual. They run the bases well and create runs. We knew that their top three players in the batting order would be tough and we knew we would have to play smart in order to win."

With pitcher Debbie Paterno throwing a solid game, the Belleville bats came to life behind Sherri Sorrentino, a junior. "Sor" had the big hit, a triple that scored the winning run in the fourth inning. Trish Tramulota also had an RBI and first baseman Cheri Tillman collected a big run scoring single. Senior outfielder Donna Brooks also contributed to the hit parade.

The Lady Bucs used a smart defense to seal the victory. Junior Desiree Johansen, just back from a short stay on the disabled list, cut off a Donna Brooks throw from the outfield and threw out a Ridgewood runner in the fifth inning. Brooks was attempting to throw out a runner at home plate on a sacrifice fly, but Johansen saw a chance to snag a potential tying run at third and got the out. In the sixth, Belleville got another double play thanks to the heads



At the plate — The Lady Bucs host Paramus Catholic tomorrow, 4 p.m. at Clearmont Field. The Ladies are 6-1 and are ranked number one in Essex County. On Saturday the team travels to Livingston.

up play of Cheryl Marion and Tramulota.

In the Paramus game, Belleville was up against a good team. The Bergen County school boys 3-1 coming into the game and Corino expected a tough game. It was a cold day and the coach opted to use Paterno once more. The junior came through again, despite yielding some 12 walks. Sue Schuster had three hits and three ribbies to lead the Belleville assault. Brooks had two hits and an RBI and Tillman contributed a hit and RBI. Corino has been pleased with the hitting of Schuster this season. At the end of the week, she had collected 15 hits in 26 trips to the plate, an average of .576. Brooks has 16 hits in 28 times to the plate and Tillman has been very impressive, collecting 11 hits in 23 trips.

The Bucs are getting strong defense from Johansen and Marion, bolstering the infield.

About the only thing that concerns Corino right now is the pitching. Although Karen Fulda is 3-1 and Paterno is 3-0, Corino is looking at a statistic that reads 53 walks in 46 innings. "That's going to catch up to us," he said. "We need to settle down on the mound, or those walks will hurt as the season progresses."

Right now, however, all is bright and rosey on the home front. The girls are 6-1, ranked in the state, and looking to begin conference play next Wednesday with Bloomfield. Corino expects the Lady Bengals to be in the hunt for the conference title. He also looks to Clifton (an average of 15 runs a game this year) and Nutley as strong teams in the NNJL. "If we get the pitching I know our girls can deliver, we can be a very effective team in the conference," Corino said. "Our hitting has looked good and the defense is doing a good job."

Bucs' post perfect week victories boost record

After struggling through the first week of the 1985 season, the Belleville baseball team got its act together and defeated three teams in a perfect week of action on the local diamond.

The tri victories boosted the team record to 3-1-1 on the young season. Ralph La Conte's team faces a difficult week of action. Last Tuesday, the Bucs battled Teaneck and yesterday were up against St. Joseph's of Montvale. Tomorrow, the boys are in Paramus for a 4 p.m. game with Paramus Catholic. On Saturday, Belleville will host Barringer in an 11 a.m. start from Belleville High. Next Monday, the club is back on the road for an 11 a.m. start with Hackensack and next Wednesday, the boys will be in

Bloomfield for another 11 a.m. contest.

Last week, Belleville, ranked second in Essex County and 14th in the state, defeated Paramus, Ridgewood and Colonia. The strong week pleased head coach La Conte, who was not worried about his teams 0-1-1 start of a week ago. "I told the boys that the wins would come," explained La Conte. "We haven't reached our full potential yet. We have a long way to go and I'm hoping that we'll reach that level in mid May, right around tournament time. Right now, we're starting to hit the ball and our pitching has been good."

Versus Paramus, Belleville benefited from two big innings to post a 9-2 win, the first victory

of the 85 season. Allan Ruopp was the winning pitcher in the contest, yielding only four hits and striking out four. Ruopp was also the hero on the offense, going three for three. For the season, Ruopp, the teams leadoff hitter, has reached base 15 out of 19 times.

The Bucs found the goose eggs early, falling behind 1-0 entering the fifth inning. There, Belleville finally got its offensive act going, tallying five runs. Joe Feith got it started with a single. He was erased when Dean Sternik advanced on a walk to Allan Ruopp and a single by Joe Mullane. John Aueriemma drove home two runs with the first, putting runners on the

(Please see "Three" on page 12)

Bucs crew dominates rival Nutley; shows strength in Philly flick races

It's becoming quite common for crew coach Sam Giuffrida to praise his 1985 team. The Buccaneers have been performing very well this spring, both in dual matches and in the prestigious "flick" races that are held in Philadelphia on various weekends. The Bucs defeated arch rival Nutley last Saturday, then went to Philly and came away with another strong performance on Sunday.

The team will have a light week, competing in the Upper Merion Regatta on Saturday. That rak will consist of Belleville, Nutley, Kearny, Upper Merion and Lower Merion. On April 27, the Bucs are in Poughkeepsie and on the 28th, return to Philadelphia for another round of flick races.

Giuffrida was again very satisfied with the teams performance against Nutley. Belleville won eight of ten races against the Maroon, tasting defeat in only the novice girls race and the senior four boys battle. "The senior four boys lost by six inches," Giuffrida said. "It couldn't have been any closer." Victories were recorded by

the junior four boys, and the junior and senior girls four. Not to be outdone, the senior eight boys were victorious, joining the senior girls eight, the junior boys eight and the junior girls eight. The novice and freshman boys won by a whopping 35 seconds.

The flick races are against some solid competition throughout the metropolitan area. Everytime a team competes in the flicks and does well, they score points that accumulate during the flick season. Off their performances in the first two flick races, Belleville has to be near the top. Back in early April, the Bucs took one first and six second place medals. This past weekend, Belleville had three firsts, a second, third and fourth place boat. On the season, Belleville has recorded four first places and seven second place showings.

"We are piling up the points in the flicks," Giuffrida said. "The kids have really come together and we're looking to be in top form for the regattas in May. That's where the season

really gets interesting."

The senior four girls, the defending national champions, took first place, avenging an earlier loss to Upper Merion. The coxswain on the boat is Jill Lillis. At four is Diane Black and she is joined by Sally Anne Dugan, Julie Mele and Stephanie Aiello.

The novice girls boat, consisting of freshman and first year girls, won by 16 seconds. That boat, an eight shell, consists of Giovanna Melozi, Beth Cantrella, Patty Macalinden, Lisa Parillo, Ruth Demgard, Carol Giuffrida, Michelle Kiernan, Tina Charles and Donna Turi.

The junior four boys, "A" team, took a first place, winning by two seconds. Members of that boat are Dennis Ives, Sean Mulcahey, Carmen Fortunato, Steve Pisaro and Dave Slietti. The junior four girls shell took a third place in the flicks, losing by one second. "We made a tactical error in the last 20 yards," Giuffrida said. "I think the girls know what they did and will look

(Please see "Splash" on page 12)

Buc Shots

By Mike Lamberti

Soccer teams move outdoors for Spring

We open this week with the Belleville Soccer Association, a group that continues to excel with top notch soccer, both on the indoor and outdoor levels. After completing a very successful indoor campaign, the teams have moved outdoors for the 1985 season. The Cobras, sponsored by the Rotary Club, opened its spring schedule with a 3-1 win over Ramsey. George Ferreira scored two goals and Mike Siletti tallied the third. The Cobras, a team featuring Belleville High School varsity players, battled Totowa to a scoreless tie this past weekend.

The strikers, sponsored by La Valle Restaurant and Pizzeria, started its spring with an impressive 9-0 whitewash of Dumont. The teams offense was led by Guy Ruocco (two goals), Nick Keykrum (two goals) and Pablo Pina (one goal, three assists). The strikers roster consists of Belleville junior varsity soccer players. Its most recent effort was a 3-2 victory over Garfield. Tony Lac led the Strikers with two goals and Frank Ferry tallied the third. The defense was led by Roger Real.

In other action, the Blast found themselves on the short end of a 4-1 defeat to a good team from Hoboken. High scoring Mike Citerella was the only Belleville player to find the scoreboard. The Blast is sponsored by P.N.C. Inc.

The Kicks lost twice last week, bowing to Montclair and Hoboken by 1-0 counts. The Kicks had numerous scoring opportunities but could not capitalize. They are sponsored by Caputo Florist.

A newly formed team, the Stars, were defeated by Watchung Hills, 5-0.

The club is looking for its first victory of the 85 season and is sponsored by For Pete's Sake.

The Belleville Bandits, pulled off a big upset by stopping South Orange, 1-0. It was back in October, 1984, that this same South Orange team had dealt Belleville a 3-0 loss, so improvement is certainly in the Bandits corner. The Bandits consist of 6 and 7 year old players. The winning goal was scored by Jim Berg. The Bandit defense held South Orange to only three shots on goal the entire game.

If anyone is interested in watching a Belleville soccer game, the Association is home on Saturday and Sunday at Municipal Stadium. It would be a nice opportunity to see the young players against some very good competition.

Back in 1981, Dana Caruso was voted the Belleville High School athlete of the year by this newspaper. She was cited for her outstanding track talent and the numerous records that she set in both cross country and track. Dana was also a fine student and in the fall of 1981, opted to attend Montclair State College. All she has done there is compete in the cross country, indoor and outdoor track programs, making a significant contribution in all three sports. In addition, Caruso has been quite a student, with a 3.4 grade point ratio with numerous academic accolades coming her way.

This past semester, her final as an undergraduate, Caruso decided to become an exchange student and travel to the "Land Down Under", Australia. Anyone who enjoys travel-

ing realizes that a move to a foreign country some 10,000 miles away is something that comes with a great deal of planning and hope. Dana was selected as an exchange student because of her fine academic standing and contributions to her school. Recently, she wrote that Australia is quite an experience. "My classes are keeping me busy, but I still have time to travel. I visited Adelaide two weeks ago. I was able to hold a Koala bear! I am also planning a trip to Queensland.



Most Australians say that is the best area of Australia."

To see a Belleville native doing so many exciting things is a special feeling to me. It goes to show the talent that we do have in Belleville. A number of Belleville High grads have gone on to fine careers and many of them keep in touch. Dana is just an example. Continued good luck to you, Dana, and we'll see you in July.

The Belleville baseball and softball teams have been in the center of the

local news. Both squads have enjoyed early season success and are ranked in the state. The softball team was supposed to be rebuilding this year after the loss of Dina De Aquino and Tracy Buono, but the girls are 6-1 and defeated Ridgewood last week in a thriller on the road. The baseball team was picked by many to be one of the best in Essex County and after a slow start, Ralph La Conte's men are not disappointing their fans. The Buccaneers are 3-1-1 and are gearing for the NNJL competition that begins next week.

While we're praising local teams, lets not forget the Belleville crew team. Year after year, Sam Giuffrida does a tremendous job of the oarsmen. In 1982 and 1984, there was a national champion in the girls junior four and junior eight shells. The boys have been very successful throughout the seasons, always performing well in the regattas and the national championships. This year, the team appears to be in marvelous shape. They have been very strong in the flick races and Giuffrida is very optimistic about the upcoming regattas in May. Continued success to coach Giuffrida and his team.

The Belleville golf team had a quiet week, competing just once in a loss to Don Bosco. The Bucs will be back in action this week with a match against Irvington, at home, tomorrow afternoon.

It seemed like the day would never come, but this Saturday, I will be married to Carol Andrea Kosior. I have heard from a lot of townspeople, wishing me luck in my new life and continued success. I cannot begin to thank everyone who has talked to me



and given advice. I will be living in Belleville following my honeymoon and will be back to work in early May. My only hope for April 20 is that is doesn't snow. Special thanks to the people in my wedding party, Anthony Satriano, Gerard Ferriek, Bill Abramoff and Michael Valiese, along with Diane Ferriek, Ellen Harmon, Theresa Frangola and Karen Abramoff. Thanks again to everyone in town for their kind words.

The Belleville High School athlete of the week is Jim Caponi of the baseball team. Caponi is tied for the team lead in ribbies with seven and has delivered a number of big hits for the Bucs in the early going.

Here is the answer to last weeks quiz. The question was, name the finalists in the 1975 NBA championship series and the team with the best record in the league that year. Also, the ABA champion. The answer: Golden State beat Washington in four games and the Boston Celtics finished 61-21 but were upset in the eastern finals by Washington. Denver won the ABA title.

For this week, name three players from the 1975 gold medal winning U.S. basketball team.

Belleville gave Paramus Catholic a strong run, losing by a 77-53 count. Once again, senior Mike Siletti was impressive, winning the 400 low hurdles in a time of 59.4 and taking the 200 meters in a time of 24.4. Siletti was second in the 110 high hur-

Mark Huamani, a sophomore, took second in the triple jump and long jump and Nick Complitano was second in the 400 meters. (56.7) and third in the high hurdles (18.0). Joseph Speer ran a 12.1 in the 100 yard

The Bucs are receiving some strong performances in the running events, something that has to please Tosato as the season progresses.

Last Saturday, Belleville started off strong versus Colonia, then had to hold on to win by one, 5-4. The Buc led, 5-0 after one inning, taking advantage of wild Colonians, tapping and key hitting by Caponi (two ribbies) and Mulhearn (two ribbies with a double). Dunphy was the starting pitcher and the sophomore was breezing through four innings, allowing just one run. With Belleville leading 7-1 in the fifth, Colonia took advantage of some wildness by Dunphy to pull within two runs, 7-5. La Conte removed Dunphy and installed Mark Palumbo. Palumbo was ineffective in his stint and La Conte went to the bullpen once more, calling Mulhearn to cool off the

NOTES: Caponi and Aueriema tied for team lead with seven ribbies each. Bucs had 13 hits against Paramus, all of which were singles. Buccaneer offense starting to wake up after scoring twice versus Bergen Catholic (a 2-2 tie) and three times versus Don Bosco (a 6-3 loss). La Conte, on his teams notoriety in state rankings, "Let the papers do the printing and we'll do the playing."

We Pay Top Prices For Used Cars, Vans and Trucks!

Cherry Blossom Festival begins three-week schedule of events

(Continued from page one)
Post-registration fee is \$10. The top three finishers in each category (age group) will receive awards.

For more information on events, call the Essex County Department of Parks, Recreation and Cultural Affairs at 482-6400.

The county department, along with Liss Pharmacy of Newark, will also sponsor its third Cherry Blossom Photo Contest.

The contest is designed to promote the cherry blossom display in Branch Brook Park. Gift certificates will be awarded to the top three winners for color prints (5 x 7). First place winners will receive \$75 gift cer-

tificates; second place, \$50 gift certificates; and third place, \$25 gift certificates. Five honorable mentions will be awarded.

Deadline for entry is May 24.

Registration fee is \$5. For entry forms and contest rules, call the county department of parks, 482-6400, ext. 241 between 9 a.m.-4:30 p.m.



A Walk Through the Park - These two ladies and their pets take a walk among the cherry blossoms in Branch Brook Park. More than 500,000 people are expected to visit the cherry blossoms this year during the three-week celebration. - Photo by Michelle Jeannotte.

CHIRO NEWS

Are You Pregnant & Hurting?

You are pregnant and your back is killing you. You go to the doctor and he says, "I'm sorry, it's up to you to give your baby a good start. It will affect the baby." Any medication is dangerous during pregnancy. Even caffeine and smoking can be avoided along with a strict diet. You are processed artificial foods and sugar products if you want to expect an healthy baby. So the doctor prescribes heat, or exercise and tells you to just bear it out until the baby comes.

Every year thousands of pregnant women suffer needlessly not realizing there is a method of treatment without side effects that can keep them feeling great. Pregnancy is a natural condition, but headaches, hip and leg pain are all normal in circumstances which you must bear. Chiropractic can alleviate most if not all of these symptoms. Chiropractors are thoroughly trained to understand the mechanical and physical aspects of what is causing pain and discomfort during pregnancy. Chiropractic is very safe as Chiropractors are trained to alter their treatment to each patient's condition.

Harry Maroulakis D.C. Chiropractor
255 Center St., Nutley, N.J. 07110
255-1365

SHERIFF'S SALE
SUPERIOR COURT OF NEW JERSEY
CHANCERY DIVISION, ESSEX COUNTY
DOCKET NO. F-4615-84 FEDERAL NATIONAL MORTGAGE ASSOCIATION, a Corporation organized by an act of Congress, PLAINTIFF vs. MR. BETTERSON, husband of Inez Betterson, et al., DEFENDANTS, Execution For Sale of Mortgaged Premises.

By virtue of the above stated writ of Execution, to me directed, I shall expose for sale by Public Auction, in SHERIFF'S OFFICE, Essex County Court Building in Newark, on Tuesday, the 23rd day of April next, at one-thirty P.M., (Preceding Time)

Property to be sold is located in the City of East Orange, County of Essex and State of New Jersey.

Premises is known as: B Winans St.
* Atty's File #6588
Tax lot #24, Block #373

Approx. Dimensions: 35 x 110.10 (irreg. Nearest Cross Street: Williams Street 701.17)

A Complete description can be found in the Essex County Register's Office.

The approximate amount of the Judgment to be satisfied by said sale is the sum of THIRTY THREE THOUSAND TWO HUNDRED TWENTY EIGHT DOLLARS AND NINETY NINE CENTS (\$33,228.99), together with the costs of this sale.

The Sheriff reserves the right to adjourn the sale from time to time as provided by Law, Newark, N.J., March 18, 1985.

THOMAS J. D'ALESSIO, Sheriff
Edward Castel, Attorney

The Belleville Times
Mar. 28, 11, 18, 1985
Fee: \$75.20

No. B85-122

School board approves proposal for basic skills summer program

(Continued from page one)
licated that although the individual classroom libraries were equally supplied, she believed each school should have a central library.

In determining which school would house the branch library, Superintendent of Schools Evan Thomas believed that School 4 would be ideally suited because of its central location, Shafter said.

The board of commissioners appropriated \$5,000 in emergency funds for structural work at School 4, Shafter said. A wall, which separated two classrooms, was knocked down to provide one large room which now houses the branch library.

"The Silver Lake Branch Library is a neighborhood version of the main library," David Bryant, library director, said. "The branch has a miniature collection of what's in the main library. We have a wide variety of reference books, dictionaries,

best sellers, video tapes, magazines and albums. If it's not here, we just bring it up from the main library."

"We provide a service and an adequate one," Mrs. Shafter added.

Since its dedication, the branch library has had only two librarians - Arthur Wolman and Kathleen Mollica. Mollica has

been the branch librarian since 1974.

The branch library has circulated more than a quarter of a million books and has been open to the public for more than 22,000 hours, Bryant said.

The Silver Lake Branch Library is open Monday-Friday, 1-5 p.m. Summer hours are from 9 a.m.-1 p.m.

PROMPT CLEANING SERVICE, CO.

195 23rd Ave., Paterson, N.J. 07513
(201) 345-3971

(24 HOUR ANSWERING SERVICE)
Fresh & Clean Carpets...Just A Phone Call Away!

- Shampoo & Steam Methods
- We move & replace most furniture
- Carpet Protector & Deodorizer Available
- Additional Services
- Upholstery Cleaning
- Floor Waxing

PRICES FROM \$36 WITH THIS AD
Personalized Service W/Competitive Prices Mean Savings For You!

ORTHODONTICS

JOSEPH A. BRASCO, D.D.S. M.S.
ROBERT J. ARMENTO, D.D.S. M.S.

- Dental Insurance Welcome
- Affordable Prices For Children and Adults

175 Franklin Ave. Nutley 667-6850
(Free Consultation With This Ad)

Why Should You Pay Ol' Betsy \$18.00 to Inspect Your Car?

| COMPARE | Ol' Betsy Auto Repair | State of N.J. Inspection Station |
|-------------------------|--|---------------------------------------|
| COST | \$18.00 plus \$1.50 sticker | FREE |
| WAIT | NONE- You make an appt. to drop car off at your convenience. | Up to 3 hours |
| Experience | over 25 years | Unknown |
| Expertise | ASE Certification | Unknown |
| Service Included | Headlight adjustment Pull 4 wheels - check brakes Road test | No adjustment No road test |

\$18.00 REALLY IS A BARGAIN!
OL' BETSY AUTO REPAIR
504 Washington Ave. Belleville, NJ 07109
All Work Fully Guaranteed 759-5561

N.J. Inspection Over 25 Years Experience Professional Auto Repair Snow Plowing
N.J.A.S.E. Certified Automotive Technician

ORTHODONTICS

AFFORDABLE BRACES FOR CHILDREN & ADULTS

CONVENIENT HOURS (EVENINGS TOO!)

DENTAL INSURANCE WELCOME

SECOND OPINIONS PROVIDED

NEVER A CHARGE FOR CONSULTATIONS
DR. MICHAEL B. FITZPATRICK
484 Washington Ave. Belleville
759-2173

ARLINGTON JEWELERS

Presents Its
DIAMOND & GOLD SPRING EXTRAVAGANZA!
BUY NOW For Mothers Day, Anniversary, Communion, Christenings, Confirmations, Weddings, Graduations and all gift giving occasions

SAVE UP TO 50% ON OUR 14K GOLD & DIAMOND SPECIAL SALE ITEMS*

Use these coupons to get a great savings on our complete line of 14K & 18K Gold Jewelry, diamonds & watches.

ALL ITEMS ARE 14K GOLD - QUANTITIES LIMITED.
PRICES SUBJECT TO CHANGE DUE TO FLUCTUATING GOLD MARKET. NOT RESPONSIBLE FOR TYPOGRAPHICAL ERRORS.

SPECIAL SALE ITEMS

| | REG. | NOW |
|--|---------|--------|
| 16" Chain Bracelet | \$16.00 | \$7.99 |
| 16" Chain Necklace | 34.00 | 16.99 |
| 18" Chain Necklace | 38.00 | 18.99 |
| 24" Chain Necklace | 48.00 | 23.99 |
| 16" Special Pendant Chain | 34.00 | 16.99 |
| 18" Special Pendant Chain | 38.00 | 18.99 |
| 16" Rope Bracelet | 52.00 | 23.99 |
| 16" Rope Necklace | 120.00 | 30.00 |
| 18" Rope Necklace | 130.00 | 79.00 |
| 20" Rope Necklace | 150.00 | 89.00 |
| 24" Rope Necklace | 180.00 | 109.00 |
| Diamond Heart Initial Pendant | 65.00 | 40.00 |
| Diamond Heart Anklet | 65.00 | 40.00 |
| Ladies Diamond Initial Bracelet | 120.00 | 60.00 |
| Ladies Diamond Initial Rings (various styles) | 100-420 | 50-225 |
| Ladies Small Diamond Initial Ring | 150.00 | 79.00 |
| Ladies Medium Diamond Initial Ring | 170.00 | 99.00 |
| Ladies Large Diamond Initial Ring | 280.00 | 149.00 |
| Ladies Jumbo Diamond Initial Ring | 420.00 | 215.00 |
| Diamond Stud Earrings - c. 1 W. | 325.00 | 200.00 |
| Diamond Stud Earrings - c. 1 W. | 430.00 | 275.00 |
| Diamond Stud Earrings - c. 1 W. | 700.00 | 429.00 |
| Custom Made Name Necklace (c. 1 W.) | 2600.00 | 80.00 |
| Monetary Ring | 150.00 | 99.00 |
| Mini Crucifix Ring | 43.00 | 23.00 |
| Ladies Crucifix Ring | 65.00 | 42.00 |
| Crucifix Ring | 80.00 | 52.00 |
| Small Diamond Cut Initial Ring | 38.00 | 25.00 |
| Figure Initial Ring | 55.00 | 35.00 |
| Large Ladies Initial Ring | 120.00 | 75.00 |
| Diamond Name Necklace with chain (handmade) | 825.00 | 475.00 |
| Diamond Name Bracelet with Double-Solid Rope Chain | 925.00 | 550.00 |
| Class of '85 Charm | 33.00 | 23.00 |
| Graduation Cap & '85 Charm | 12.00 | 8.00 |
| First Communion Charm | 28.00 | 19.00 |
| Good Communion Charm | 38.00 | 26.00 |

Come see one of the largest selections of fine jewelry in New Jersey at great savings! Huge selection of chains, charms, earrings, bangles, bracelets, watches, rings, diamonds, diamond jewelry and pearls!

COUPON

FREE BUY A DIAMOND SOLITAIRE (\$1000. OR MORE) AND RECEIVE A FREE 14K GOLD ENGAGEMENT RING SETTING

FREE GOLD Get A FREE 14K Gold Jewelry Gift

20% OFF ALL PURCHASES
ARLINGTON JEWELERS
36 RIDGE RD.
NUTLEY, N.J. 07110
NUTLEY BRANCH ONLY
Expires May 31, 1985

Main Store: 36 RIDGE ROAD, NO. ARLINGTON • 998-5036

Branch Store: 261 FRANKLIN AVE. NUTLEY .. 661-1558

Hours: Mon., Wed., Sat. 10-6; Thurs., Fri. 10-8; Closed Tuesdays

For New Jersey Investors: The savings of a discount broker The convenience of a bank

INVEST IN STOCKS NOT STOCKBROKERS

SAVE UP TO 70% ON COMMISSIONS!

For FREE FACT KIT call toll-free **in New Jersey: 800-742-2918** or stop in at your nearest Provident Office.

IN AFFILIATION WITH NEIE Member SIPC

THE PROVIDENT

SAVINGS BANK

Offices throughout New Jersey • Member FDIC

17th NATIONWIDE NETWORK

THERE'S A PROVIDENT OFFICE NEAR YOU IN
Bayonne, Belleville, Bloomfield, Burlington Township,
Cherry Hill, Collingswood, Dumont, Dunellen, East Brunswick,
East Windsor, Green Brook, Jersey City, Leonia, Maple Shade,
Mount Holly, Northvale, Ocean Township, Point Pleasant,
Beach, Red Bank, Teaneck, Union City, West New York,
Westwood, Willingboro, War Township

SHERIFF'S SALE
SUPERIOR COURT OF NEW JERSEY, CHANCERY DIVISION, ESSEX COUNTY, DOCKET NO. F-6500-84 RITA J. LONDELL and WILLIAM J. LONDELL, JR., PLAINTIFFS vs. VERNAL I. MADDEN and BROADWAY BANK & TRUST CO., DEFENDANTS, Execution For Sale of Mortgaged Premises.
By virtue of the above stated writ of Execution, to me directed, I shall expose for sale by Public Auction, in SHERIFF'S OFFICE, Essex County Court Building in Newark, on Tuesday, the 23rd day of April at, at one-thirty P.M., (Prevailing Time) all the following tract

TOWNSHIP ORDINANCE
PUBLIC NOTICE is hereby given that the following proposed ordinance was introduced and passed on first reading at a meeting of the Board of Commissioners of the Township of Belleville held on Tuesday evening, April 9, 1985 and further notice is hereby given that the second and final reading of said ordinance will be considered by said Board of Commissioners at a meeting to be held at the Town Hall, Washington Avenue and Belleville Avenue, Tuesday evening, May 14, 1985 at eight o'clock p.m. when all objections to the passing of the same will be heard and considered.

TOWNSHIP ORDINANCE
PUBLIC NOTICE is hereby given that the following proposed ordinance was introduced and passed on first reading at a meeting of the Board of Commissioners of the Township of Belleville held on Tuesday evening, April 9, 1985 and further notice is hereby given that the second and final reading of said ordinance will be considered by said Board of Commissioners at a meeting to be held at the Town Hall, Washington Avenue and Belleville Avenue, Tuesday evening, May 14, 1985 at eight o'clock p.m. when all objections to the passing of the same will be heard and considered.

TOWNSHIP ORDINANCE
PUBLIC NOTICE is hereby given that the following proposed ordinance was introduced and passed on first reading at a meeting of the Board of Commissioners of the Township of Belleville held on Tuesday evening, April 9, 1985 and further notice is hereby given that the second and final reading of said ordinance will be considered by said Board of Commissioners at a meeting to be held at the Town Hall, Washington Avenue and Belleville Avenue, Tuesday evening, May 14, 1985 at eight o'clock p.m. when all objections to the passing of the same will be heard and considered.

★ PUBLIC NOTICE ★
WE AT BERNIE'S ROOM AT THE BOTTOM
ARE HONORED AND MOVED BY YOUR DEVOTION.
AND IN RESPONSE TO THE WIDESPREAD OUTCRY
WE WILL NOT MOVE OUR STORE TO CALDWELL AS PLANNED.
WITH SUPPORT AND LOVE LIKE YOURS, IT LOOKS LIKE WE'RE GOING TO REMAIN IN STYERTOWNE FOR A LONG, LONG TIME TO COME.

Thank You,
Ethel, Shelley
BERNIE'S
Room at the Bottom
1063 Bloomfield Ave., Clifton
(201) 777-1992

BILL TAYLOR'S
Hot & Cold Catering
For Large Or Small Parties
All Cooking On Premises
Featuring Our Old World Italian Recipes
WE DELIVER 667-4877
95 Harrison St., Nutley

HONDA
SCOOTERS
Prices Start At \$399
The Motorcycle Mall
165 WASHINGTON AVE. BELLEVILLE
751-4545
751-7727

SHERIFF'S SALE
SUPERIOR COURT OF NEW JERSEY, CHANCERY DIVISION, ESSEX COUNTY, DOCKET NO. F-6522-80 FEDERAL NATIONAL MORTGAGE ASSOCIATION, PLAINTIFF vs. GILBERT WALL, JR., et al., DEFENDANTS, Execution For Sale of Mortgaged Premises.
By virtue of the above stated writ of Execution, to me directed, I shall expose for sale by Public Auction, in SHERIFF'S OFFICE, Essex County Court Building in Newark, on Tuesday, the 14th day of May next, at one-thirty P.M., (Prevailing Time)
Property to be sold is located in the City of New Jersey, County of Essex and State of New Jersey.
Premises is known as #99 Bedford Street Apt's 5 & 6, 4558
Tax Lot #5, Block #77
Approx. Dimensions: 25 x 100 ft.
A complete description can be found in the Essex County Register's Office.
The approximate amount of the Judgment to be satisfied by said sale is the sum of ELEVEN THOUSAND EIGHT HUNDRED EIGHTY SEVEN DOLLARS AND EIGHTY SIX CENTS (\$11,887.86), together with the costs of this sale.
The Sheriff reserves the right to adjourn the sale from time to time as provided by Law.
Newark, N.J. April 18, 1985
THOMAS J. DALESSIO, Sheriff
Edward Castel, Attorney

The Belleville Times
Apr. 18, 1985
Apr. 11, 18, 1985
Fee: \$99.64
No. 885-121

SHERIFF'S SALE
SUPERIOR COURT OF NEW JERSEY, CHANCERY DIVISION, ESSEX COUNTY, DOCKET NO. F-6522-80 FEDERAL NATIONAL MORTGAGE ASSOCIATION, PLAINTIFF vs. GILBERT WALL, JR., et al., DEFENDANTS, Execution For Sale of Mortgaged Premises.
By virtue of the above stated writ of Execution, to me directed, I shall expose for sale by Public Auction, in SHERIFF'S OFFICE, Essex County Court Building in Newark, on Tuesday, the 14th day of May next, at one-thirty P.M., (Prevailing Time)
Property to be sold is located in the City of New Jersey, County of Essex and State of New Jersey.
Premises is known as #99 Bedford Street Apt's 5 & 6, 4558
Tax Lot #5, Block #77
Approx. Dimensions: 25 x 100 ft.
A complete description can be found in the Essex County Register's Office.
The approximate amount of the Judgment to be satisfied by said sale is the sum of ELEVEN THOUSAND EIGHT HUNDRED EIGHTY SEVEN DOLLARS AND EIGHTY SIX CENTS (\$11,887.86), together with the costs of this sale.
The Sheriff reserves the right to adjourn the sale from time to time as provided by Law.
Newark, N.J. April 18, 1985
THOMAS J. DALESSIO, Sheriff
Edward Castel, Attorney

The Belleville Times
Apr. 18, 1985
May 2, 9, 1985
Fee: \$73.32
No. 885-149

SHERIFF'S SALE
SUPERIOR COURT OF NEW JERSEY, CHANCERY DIVISION, ESSEX COUNTY, DOCKET NO. F-6522-80 FEDERAL NATIONAL MORTGAGE ASSOCIATION, PLAINTIFF vs. NORMAN BURKS and Barbara Burks, his wife, et al., DEFENDANTS, Execution For Sale of Mortgaged Premises.
By virtue of the above stated writ of Execution, to me directed, I shall expose for sale by Public Auction, in SHERIFF'S OFFICE, Essex County Court Building in Newark, on Tuesday, the 14th day of May next, at one-thirty P.M., (Prevailing Time)
Municipality, City of Newark, County of Essex and State of New Jersey.
Street: Number 1, Street: 37-39 Isabella Avenue.
Tax Lot & Block: Lot 68, Block 403.
Dimensions: 27 ft. 6 in. x 100 ft.
Number of feet to nearest cross street: 413 feet Southly from the Southern line of South Orange Avenue.
A complete description can be found in the Essex County Register's Office.
The approximate amount of the Judgment to be satisfied by said sale is the sum of THIRTY THOUSAND THIRTY FOUR DOLLARS AND NINETY FOUR CENTS (\$30,034.94), together with the costs of this sale.
The Sheriff reserves the right to adjourn the sale from time to time as provided by Law.
Newark, N.J. April 18, 1985
THOMAS J. DALESSIO, Sheriff
HOLSTON and MACDONALD, Attorneys

The Belleville Times
Apr. 18, 1985
Apr. 9, 1985
Fee: \$75.20
No. 885-150

ADVERTISEMENT FOR BIDS
SEALED proposals will be received by the Board of Education of the Township of Belleville, County of Essex, State of New Jersey, on May 13, 1985 for the following:
Custodial Supplies - 10:00 am prevailing time.
Maintenance Supplies & Equipment - 10:30

am prevailing time.
Electric Supplies & Equipment - 11:00 am prevailing time.
Bathroom Partitions - 1:00 pm prevailing time.
Music Supplies & Equipment - 1:30 pm prevailing time.
Specifications and full information may be obtained on application to the Office of the Secretary, School Business Administrator, Board of Education Administrative Office Complex, 190 Corlandt Street, Belleville, N.J. 07109, prior to the time set for opening of the bids.
No bid will be considered, regardless of postmark, unless it is in the hands of the Board Secretary prior to the time set for the opening of bids.
No bid will be considered unless accompanied by a certified check or bid bond drawn to the order of the Belleville Board of Education for 10% of the total bid.
The Board of Education reserves the right to reject any or all bids and/or to accept the bid that in its judgment will be best for the School District of Belleville, and to waive any informalities. If only one bid is received, the Board reserves the right to reject said bid without opening same.
Bidders are required to comply with the requirements of P.L. 1975, c. 127, N.J. Law Against Discrimination, and Ch. 33, Laws of 1977.

BY ORDER OF THE BOARD OF EDUCATION OF THE TOWNSHIP OF BELLEVILLE, COUNTY OF ESSEX, NEW JERSEY
Edward J. Appleton, Acting Board Secretary
School Business Administrator
The Belleville Times
Apr. 18, 1985
Fee: \$21.15
No. 885-153

ADVERTISEMENT FOR BIDS
SEALED proposal will be received by the Board of Education of the Township of Belleville, Essex County, New Jersey, at the Board of Education Administrative Complex, 190 Corlandt Street, Belleville, N.J. on May 10, 1985, at 2:00 P.M. prevailing time for Floor Treatment Materials, in accordance with the specifications prepared by the Acting Board Secretary, School Business Administrator.
The Board of Education reserves the right to reject any or all bids and/or to accept the bid that in its judgment will be best for the School District of Belleville, and to waive any informalities. If only one bid is received, the Board reserves the right to reject said bid without opening same.
No bid will be considered unless accompanied by a certified check drawn to the order of the Board of Education, Belleville, N.J., in the amount of \$200.00 for the product testing including lab testing or chemical analysis to prop submittal actual to specified product. If the product of the low bidder shows test results of the equivalent to the specified product, the \$200.00 check of the other bidder will be returned. If said test results are not acceptable, the check of the next low bidder will be applied to the cost of testing his product etc.
No bidder may withdraw his bid for a period of fifteen (15) days after the date set for bidding therefor.
Bidders are required to comply with the requirements of P.L. 1975, c. 127, N.J. Law Against Discrimination, and Ch. 33, Laws of 1977.

BY ORDER OF THE BOARD OF EDUCATION OF THE TOWNSHIP OF BELLEVILLE, COUNTY OF ESSEX, NEW JERSEY
Edward J. Appleton, Acting Board Secretary
School Business Administrator
The Belleville Times
Apr. 18, 1985
Fee: \$19.74
No. 885-154

SUPERIOR (LAW) G-92
SUPERIOR COURT OF NEW JERSEY, LAW DIVISION, ESSEX COUNTY, DOCKET NOS. L-07363-84 & L-374-85, ROBERT B. FISH and YEDA FISH, PLAINTIFFS vs. JOHN FREGANZ, CHRISTINE FREGANZ and MARCH REAL ESTATE INVESTMENT CORPORATION, DEFENDANTS, Execution.
By virtue of the above stated writ of Execution, to me directed, I shall expose for sale by Public Auction, in SHERIFF'S OFFICE, Essex County Court Building in Newark, on Tuesday, the 30th day of April next, at one-thirty P.M., (Prevailing Time) all the right, title and interest of the above named Defendant, March Real Estate Investment Corporation of in and to all that tract or parcel of land and premises located in the City of East Orange, County of Essex and State of New Jersey.
The Property includes: (a) the land; (b) all buildings that are now, or will be, located on the land; (c) all fixtures that are now, or will be, attached to the land or building(s); (d) all improvements, furnaces, bathroom fixtures and kitchen cabinet(s); (e) all condemnation awards and insurance proceeds relating to the land and building(s); and (f) all other rights that I have, or will have, as owner of the Property. The legal description of the Property is:

BEGINNING in the westerly line of North Walnut Street 138 feet northerly from the intersection of the said westerly line of North Walnut Street and the northerly line of Williams Street; thence (1) north 57 degrees 11 minutes 30 seconds west 152.15 feet; thence (2) north 57 degrees 37 minutes west 48.55 feet; thence (3) north 37 degrees 37 minutes east 75.59 feet; thence (4) south 53 degrees 25 minutes east 200 feet to the said westerly line of North Walnut Street; thence (5) south 37 degrees 37 minutes west 62 feet to the point and place of BEGINNING.
BEING known as and by street #83 North Walnut Street, East Orange, New Jersey.
BEING ALSO KNOWN AND DESIGNATED AS Lot #2, Block #263.
The approximate amount of the Judgment to be satisfied by said sale is the sum of ONE HUNDRED FORTY-NINE THOUSAND TWO HUNDRED SIXTY EIGHT DOLLARS AND FIFTY-SIX CENTS (\$149,268.56), together with the costs of this sale.
The Sheriff reserves the right to adjourn the sale from time to time as provided by Law.
Newark, N.J. March 25, 1985
THOMAS J. DALESSIO, Sheriff
Sylvia B. Cowen, Attorneys

The Belleville Times
Apr. 11, 18, 25, 1985
Fee: \$118.44
No. 885-130

TOWNSHIP ORDINANCE
PUBLIC NOTICE is hereby given that the following proposed ordinance was introduced and passed on first reading at a meeting of the Board of Commissioners of the Township of Belleville held on Tuesday evening, April 9, 1985 and further notice is hereby given that the second and final reading of said ordinance will be considered by said Board of Commissioners at a meeting to be held at the Town Hall, 152 Washington Avenue at Belleville Avenue, Tuesday evening, May 14, 1985 at eight o'clock p.m. when all objections to the passing of the same will be heard and considered.

TOWNSHIP ORDINANCE
PUBLIC NOTICE is hereby given that the following proposed ordinance was introduced and passed on first reading at a meeting of the Board of Commissioners of the Township of Belleville held on Tuesday evening, April 9, 1985 and further notice is hereby given that the second and final reading of said ordinance will be considered by said Board of Commissioners at a meeting to be held at the Town Hall, 152 Washington Avenue at Belleville Avenue, Tuesday evening, May 14, 1985 at eight o'clock p.m. when all objections to the passing of the same will be heard and considered.

TOWNSHIP ORDINANCE
PUBLIC NOTICE is hereby given that the following proposed ordinance was introduced and passed on first reading at a meeting of the Board of Commissioners of the Township of Belleville held on Tuesday evening, April 9, 1985 and further notice is hereby given that the second and final reading of said ordinance will be considered by said Board of Commissioners at a meeting to be held at the Town Hall, 152 Washington Avenue at Belleville Avenue, Tuesday evening, May 14, 1985 at eight o'clock p.m. when all objections to the passing of the same will be heard and considered.

DRAPERIES PLUS
GRAND OPENING SALE
Starting Wednesday 4-17-85
50% Off Vertical Blinds
Levelor Blinds - Woven Woods - Custom Window Shades
Free Shop At Home Service
142 Chestnut St. Nutley, N.J. 667-9047

Come to MELTZER'S SPORTS of Clifton
18 The Plaza, Styertowne Shopping Center, Clifton, N.J. 07012 (201) 778-7401
Owned by: Billy Meltzer & Joel Pasternack

We have something for the whole family:
Athletic Footwear, Warm-Ups, Shorts Sox, Shirts, and Sweats Soccer, Football, Basketball Baseball Bats and Gloves
Located in the Styertowne Shopping Center on the Lower Level next to Bonds
We proudly carry the following brand names:

Addidas, Brooks, Bill Rodgers, Converse Dunham, Etonic, New Balance, Nike Puma, Rawlings, Roc Sports, Tiger Turntec, Wigwam, Wilson, and more!
GRAND OPENING SPECIALS
20% OFF* ALL CLOTHING IN STOCK
Valid only with coupon Expires April 30, 1985
10% OFF* ALL SNEAKERS IN STOCK
Valid only with coupon Expires April 30, 1985
10% OFF* ALL SPORTING GOODS IN STOCK
Valid only with coupon Expires April 30, 1985
*Does not apply to team or company discounts

SPRING HOME IMPROVEMENT

Look Behind The Big Number When Buying Air Conditioner

When central air conditioning manufacturers began putting SEER numbers on their units, homeowners gained a number which helps in making buying decisions.

SEER, or Seasonal Energy Efficiency Ratio, for air conditioners and heat pumps is so valuable that it is decreed by a federal law that also requires it to be backed up by testing that meets government standards.

With a unit having a 10 SEER, a buyer can count on getting 20% more cooling per watt of electricity than with a unit with an 8 SEER.

But, cautions BDP Company, there is more to selecting an air conditioning unit than just the big number. Based in Indianapolis, BDP manufactures Bryant, Day & Night and Payne equipment including air conditioners with ratings up to 13.2 SEER. It has one of the industry's most sophisticated heating and air conditioning equipment research and testing facility, and has been in the home comfort business for over 80 years.

"SEER ratings are determined by extensive testing in our state-of-the-art technology Engineering Center," said Robert M. Thompson, BDP Company vice-president of engineering.

Reliability is also important to use energy dollars efficiently. If a unit fails to function as promised—and excessive service calls are required—savings in energy are eroded. Also, a unit that is not functioning properly usually is not running as efficiently as predicted.

To check the reliability of Bryant, Day & Night and Payne air conditioners, every unit is tested on the assembly line to assure that the electrical controls, the refrigerant lines, the compressor and other components are operating properly. Data from production line testing is measured against standards established in the engineering lab.

There are other quality factors that need to be considered. How much noise the unit makes is one. Noise is rated in decibels and may be particularly important if the air conditioner must be next to the patio or under a neighbor's bedroom window. The lower the decibel rating, the quieter the unit.

In making a buying decision, utility costs need to be considered. For example, in an area with high electric rates, a small premium paid for a high efficiency unit (10 SEER or better) may be worth the extra purchase price when compared to savings in utility bills. Air conditioning dealers and electrical utilities can provide the figures to compare pay back costs.

There is a human factor in air conditioner efficiency, too. Differing life styles can mean that two households with identical air conditioners can have widely varying electrical bills. For example, a household of adults away at work all day, who turn the thermostat up, are likely to have lower bills than one with children constantly running in and out.

Even families who are likely to put heavy loads on an air conditioner can get the human factor to work in increasing air conditioning efficiency. Some of the things they can do:

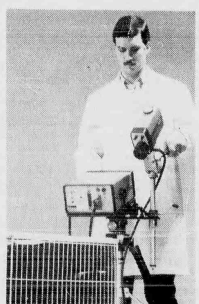
- Filters in the air handler or furnace need to be clean. Check once a month.
- Have the unit cleaned and checked by a qualified service representative before the cooling season.
- Run appliances such as a clothes

dryer in early morning hours. This is better than at night because in the evening on a hot day, the air conditioner is still working to bring down the temperature from the daytime heat.

- Keep curtains closed on sunny days during the day.
- Keep doors closed on attached garages.

Trim shrubbery around the air conditioner. Landscaping too close to an air conditioner or heat pump may look pleasing but reduces efficiency by curtailing air movement.

BDP Company is a division of Carrier Corp., a subsidiary of United Technologies.



Rob Cunningham, a BDP laboratory technician, focuses a thermal imager camera on an air conditioner's coils. It detects variations in coil temperatures, a step in assuring maximum air conditioner efficiency.



Floyd Gant, an engineering associate at BDP Company, prepares to use a sound intensity probe to determine the source of specific sounds in an air conditioner. Vibrations picked up by the two-prong probe feed into a computerized signal analyzer (rear). The high technology equipment helps BDP in developing quiet heating and air conditioning equipment.

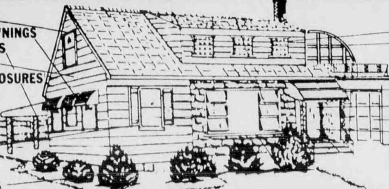
ors Concept, the new decorations are high-fired and have a subtle three-dimensional effect achieved by movement of the glaze in firing.

Tricia Stanton, of Queensberry Hunt of London, the international ceramic design specialist, is responsible for the china patterns, as well as design-related products: three tile systems by American Olean, a vinyl wall covering by National Gypsum Decorative Products, towels by Fieldcrest, and a set of small storage jars being offered by American Standard as gift-with-purchase.

759-1161 KING

OF BELLEVILLE
WHERE YOU BUY WITH CONFIDENCE SINCE 1950
YOUR FULL SERVICE HOME IMPROVEMENT CO.

STORM WINDOWS
PATIO & WINDOW AWNINGS
SLIDING GLASS DOORS
SIDING - ALUM/VINYL
TUB & SHOWER ENCLOSURES
CUSTOM MIRROR
INSTALLATIONS
BATHROOM
REMODELING
SHUTTERS
FENCES
BASEMENT WINDOWS

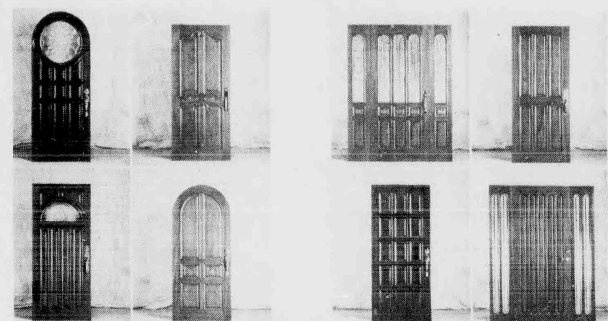


SHOWROOM
105 WASHINGTON AVE.,
BELLEVILLE, N.J.

REPLACEMENT WINDOWS
GREEN HOUSES
WROUGHT IRON RAILINGS
ALUMINUM RAILINGS
DOOR HOODS
REPLACEMENT DOORS
GARAGE DOORS
STORM DOORS
VERTICAL
HORIZONTAL BLINDS
SHADES

FACTORY GUARANTEE PROFESSIONAL INSTALLATION SCREEN & GLASS REPAIRS

Sophisticated Private Collection Of Philippine Mahogany Entry Doors Available



With over 70 years in the door manufacturing business Simpson Door Company, is able to combine their expertise in design and manufacture of doors with the availability of Philippine Mahogany to produce doors of rare beauty and quality at a price that is within reach of American homeowners.

The collection features two doors with rounded tops—an entirely new design element for Simpson doors. Jambs are also available to fit these round-topped doors.

All leaded glass in the private collection doors is insulated and is expertly crafted with zinc for superior strength. The design is on the inside of the triple-paned glass for easy cleaning.

Natural wood grains and colors are carefully matched for a "cut from the same tree" look and a unique system of mortise and tenon construction assures that doors in the Private Collection will withstand heavy use and harsh weather.

The exceedingly smooth finish is achieved with a lengthy, many-stepped process involving pre-sanding, sealing, hand-filing and multiple finish coats.

Panels of every door in the collection are 1 1/2" thick and stiles are a full 5". For information about the Private Collection of premium quality doors, contact Simpson Door Company, 900 Fourth Ave., Seattle, WA 98164.

Gas Facts

Synthetic natural gas can be produced from coal in gasification plants or by using underground gasification techniques. It is estimated that the U.S. has 438 billion tons of coal reserves in the ground that's enough to last several hundred years.

KITCHEN, BATH & HOME INTERIOR IDEAS

Home Improvement Should Be More than Repairs

Brought To You By John P. Castronova C.K.D.

Spring Home Improvement time should mean more than fixing gutters or other repair jobs around the house. Think

Castronova also about improving your quality of life by correcting the deficiencies of an inefficient kitchen that fails to provide either adequate storage or adequate counter space.

If it's the heart of the home, it has to be more than sink, cabinets and appliances. It should be a room you are proud of when you or your friends see it.

And the kitchen should, more than anything else, fit your lifestyle in an attractive way. It should be designed to fit your snacking and dining habits, your social requirements, the needs of all members of the family.

Doors? Many of our customers are amazed when they visit our showroom and see all of the new products that have been developed just in the last few years. They make kitchens handier and more workable, as well as more attractive and more easily cleaned.

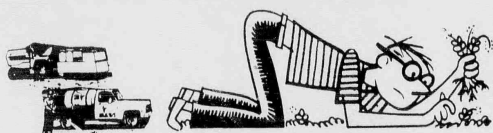
So this Spring, with its usual emphasis on Home Improvement Time, make up your mind at least to find out about what is new and exciting.

A visit to our showroom can be the first step to a more enjoyable, rest-of-your-life.

PARAMOUNT KITCHENS

Nutley showroom
291 Nutleyfield Ave. Nutley, NJ 07110
(201) 484-2452
Factory showroom
211 Central Ave. Harrison, NJ 07029
(201) 667-9065

Lawn Gone?



Time to call Lawn King

All lawns need an annual program of lawn care and every program must contain both granular and spray. Some chemicals work better when applied in a granular form, and others, like weed controls and post emergent crab grass controls, work better in a liquid form. All lawns also require periodic aeration and seed, but only Lawn King gives all these via LAWN COMBINE & SPRAY — THE BETTER WAY! WE KNOW IT'S THE ONLY WAY!!

| LAWN KING ANNUAL PROGRAM | | | | |
|--|---|---|--|---|
| 1. Balanced Fertilization Broadleaf Weed Control Pre-emergent Crab Grass Control | 2. Balanced Fertilization Broadleaf Weed Control Crab Grass Control | 3. Balanced Fertilization Broadleaf Weed Control Crab Grass Control | 4. Power Aeration Power Rolling Broadleaf Fertilization Broadleaf Post-Emergent Crab Grass Control Seed (1 lb./1000) | 5. Fertilization Broadleaf Control Lime |

We are chemical applicators, not tractor workers. We know what your lawn needs and when it needs it. What you see in the program, is what you get. Top quality chemicals and seed — only the best — all we use. There's no such thing as a specially formulated for drought.

Aeration, seed and lime are part of our program. Fungus controls and grub controls have always been part of our program, no options of extra cost when you need them. By the time you know you need them it's too late anyway.

OPTIONAL PREPARATORY SERVICE

Double Power Aeration Double Power Rolling Double Seed Control

Barbed Fertilization Fungus Control Grub Control (Granular)

1" PER SQUARE FOOT (min. 3,000 sq. ft.)



Someone will call to discuss the lawn with you. There's a one time charge if you need any extra like a preparatory service, extra seed or additional time. We'll tell you what you need. We may not be the cheapest lawn service you've heard of, but we're the only one who gives you lawn everything it needs at a price you can afford to pay. You can figure your rate from the chart below. No contracts, no cash on hand, no guarantees, no promises, and no nonsense. Pay from service to service or prepay for the year and we'll give you a 5% discount too!

If you compare our program and prices with any other company you'll find that either they are charging too much, or we are not charging enough! Look at it real close and you may even arrive at the conclusion that not only is it better to do business with us — it's cheaper, too!

| SQUARE FOOTAGE | QUARTERLY INSTALLMENT | TOTAL ANNUAL COST |
|----------------|-----------------------|-------------------|
| 3000 | 30.25 | 140.90 |
| 4000 | 40.24 | 180.96 |
| 5000 | 50.22 | 220.92 |
| 6000 | 60.22 | 260.88 |
| 7000 | 70.22 | 300.88 |

LARGER LAWNS PRICED PROPORTIONATELY
ALL PRICES PLUS SALES TAX



LAWN GONE?

Time to Call...



Nutley, Belleville, Bloomfield
994-2255/743-1025

Lawn King with this coupon
\$10.00 OFF or 5%

On Your First Year's Service (Minimum 3,000 sq. ft.)

Limit one coupon per customer

Coupon valid with new customers only

EST. 1949

Reid's DECORATING & UPHOLSTERING CO.

- Custom Made Draperies
- Vertical Blinds
- Mini Blinds
- Shades
- Foam Cushions
- Refitted
- Reupholstering and Repairs
- We Sell and Install Carpet
- Plastic Slipcovers
- Custom made fabric Slipcovers
- No Job Too Large Or Too Small

Commercial and Residential

15% OFF Senior Citizen Discount

With this ad

511 Bloomfield Ave. Montclair, N.J.
744-6644 or 672-5533

Offer Expires April 30, 1985

Parking in Rear Of Store
Master Card, Visa, AM, Ex.
Mon-Fri. 9-6, Sat. 9-4

BUSINESS DIRECTORY

ROOFING & SIDING

HILLO ROOFING CO.
227-4455 NUTLEY
Install roof tar roofs,
shingles, leaders & gutters.
Fully insured. Free
estimates. Industrial &
residential. Member of
Better Business Bureau.

**BUILT-TOE
ROOFING**
Shingles • Hot Tar
Chimneys • Repairs
Fully insured. Free estimates.
953-5189

ROOFING GUTTERS

• Siding • Trim • Sills
Storm Windows/Doors
FREE ESTIMATES
Call BOB 751-4155

TV SERVICE

Bob Drummond
TV SERVICE
Over 40 Years Experience
667-0068

A.T.S. ELECTRIC SERVICE

Stereo, TV, Intercom,
CCTV, Security Systems
No charge for
estimate. Call 667-0656
Campanelli Stereo
Specialists.

CHILD CARE NURSERY SCHOOLS

**The Magic
Collage
Nursery School**

A Play, Play Learning in Full
Member Belleville Area
Council on Child Care
and Teachers. Balanced
Lunch. Year-round full day
care, nursery school.
• Arts and Crafts •
• Science • Music •
• All Day Kindergarten
393 Washington Ave.
Belleville, Tenn. 37015

PEDIATRIC RN MOTHER OF 4, OF- FERS LOVING CARE, TO INFANTS, CHILD- REN, AND ADOL- ES- CENTS. IN HER COUNTRY STYLE HOME. LARGE YARD.

661-5581

LITTLE SCHOLAR

444 Union Ave.
Belleville
Preschool & Day Care
During & Afternoon sessions.
Call Lillian K. Karpman
for information. Ages 3-5
Full Time Day Care
Call 751-4040
Cert. Teachers, State Lic.
Classroom Aids
Reg. Nurse on Staff

WISE OWL NURSERY SCHOOL

617 Washington Ave.
Belleville
State License # 39619

QUALITY program teachers

Sunny, home-like 1st
floor environment. Ab-
solutely no day care
visitors. 751-1211

REGISTER NOW FOR FALL OF '85

**SAINT MARY'S
FREE
KINDER-
GARTEN
SCHOOL**

St. Mary's Has it all!
• 4 year old program
• Late Life Kindergarten
After school care for working
parents. Free tuition. Information
call 667-0801

PLUMBING & HEATING

J. G. YOUNG & SONS, INC.
PLUMBING & HEATING
State License #684 & #990
Kitchens and Bathrooms Remodeled
Automatic Fire Sprinkler Systems
Gas Heat Hot Water Heaters, Duct Sewer Cleaning
• Commercial • Residential • Industrial
Repairs • Alterations • New Construction
661-1479

PEOPLE'S HEATING CONTRACTORS, INC.

RESIDENTIAL • COMMERCIAL
• Burners & Boilers • Service & Maintenance
• Modernization • Efficiency Testing
Reliable Repair Service
661-1479

CHILD CARE NURSERY SCHOOLS

**Nanny D's
Infant Care Center**
204 Washington Ave.
Belleville
Full Day Sessions, 6
Weeks to 2 years old.
Director, Dolores Aft
759-1524

MEMORIAL DAY OUTDOOR FLEA MARKET

Sponsored by the
Home & School Assoc.
• Dealers, Crafts, Hob-
bies & Homewares •
• HOLY FAMILY
CHURCH
PARKING LOT
28 Brookline Ave.
Nutley, N.J.
Monday, May 27, 1985
7 P.M. - 4 P.M.
Rain Date June 1
10 A.M. - 4 P.M.
• Space Rental &
Information
338-5441 • 759-3347
(after 6 P.M.)
Refreshments
Home Made Cake Sale
5-9

AMERICAN Legion Aux-iliary

Nutley Unit 70,
49 Franklin Ave.
Sun, Apr. 21 & 28
May 12 & 19
June 2 & 9
Tables available.
Call June
751-5752
10AM-4PM

SUPER FLEA-CRAFTIQUE Extravaganza

(Flea, Craft & Antique
Sponsored by
THE ROTARY CLUB
Call June
WEST ORANGE
SATURDAY
APRIL 27, 1985
10AM to 5PM
West Orange High
School Gymnasium
Pleasant Valley Way
West Orange, N.J.
ADMISSION FREE

Spring Flea Market

Belleville Eklis
254 Washington Ave.
April 27, 1985
1 P.M. - 5 P.M.
All new merchandise -
discounted. Call
after 6pm. 751-7123

GARAGE SALE

EMILY'S RESALE
Consignment
Open Thursday 5 to 8 pm,
Friday 12 to 4 pm, Sat. 10
am to 5 pm, Sun. 10 am
to 3 pm. Buy one clothing item
and rec. one FREE of equal
value. (With this ad.) 128
Montgomery St., Bloom-
field, N.J. 07001
COMING SOON-NEW
LINE OF MERCHANDISE

Giant multi family Garage Sale

Sale 241-243
Kingsland St., Nutley,
NJ Sat. & Sun. Apr 19 & 20
10AM-4PM. Rain or
shine.

2 Families moving. Furniture, Housewares & Kids stuff 129 Flord St. Belleville. Rain Shine. April 20, 10-4PM.

Household goods sale. Some handcap items. 10 ft steel wheel chair ramp, other items. Appliances & dishes. Sat. April 20, 9-11. 101 Lovell Court, Nutley.

HOUSEHOLD ITEMS - SAT. APRIL 20 9AM-5PM 57 FOREST ST. BELLEVILLE.

WICKER BATTAN PEEL WICKERLAND Furniture - Lamps

Kitchenware • Accessories
Large selection of wicker for
any purpose, of good quality,
sensitively priced.
Stop in and Browse
43A CHURCH STREET
MCDONALD'S
783-0435

PEOPLE'S HEATING CONTRACTORS, INC.

RESIDENTIAL • COMMERCIAL
• Burners & Boilers • Service & Maintenance
• Modernization • Efficiency Testing
Reliable Repair Service
661-1479

PLUMBING & HEATING

J. G. YOUNG & SONS, INC.
PLUMBING & HEATING
State License #684 & #990
Kitchens and Bathrooms Remodeled
Automatic Fire Sprinkler Systems
Gas Heat Hot Water Heaters, Duct Sewer Cleaning
• Commercial • Residential • Industrial
Repairs • Alterations • New Construction
661-1479

CHILD CARE NURSERY SCHOOLS

**Nanny D's
Infant Care Center**
204 Washington Ave.
Belleville
Full Day Sessions, 6
Weeks to 2 years old.
Director, Dolores Aft
759-1524

MEMORIAL DAY OUTDOOR FLEA MARKET

Sponsored by the
Home & School Assoc.
• Dealers, Crafts, Hob-
bies & Homewares •
• HOLY FAMILY
CHURCH
PARKING LOT
28 Brookline Ave.
Nutley, N.J.
Monday, May 27, 1985
7 P.M. - 4 P.M.
Rain Date June 1
10 A.M. - 4 P.M.
• Space Rental &
Information
338-5441 • 759-3347
(after 6 P.M.)
Refreshments
Home Made Cake Sale
5-9

AMERICAN Legion Aux-iliary

Nutley Unit 70,
49 Franklin Ave.
Sun, Apr. 21 & 28
May 12 & 19
June 2 & 9
Tables available.
Call June
751-5752
10AM-4PM

SUPER FLEA-CRAFTIQUE Extravaganza

(Flea, Craft & Antique
Sponsored by
THE ROTARY CLUB
Call June
WEST ORANGE
SATURDAY
APRIL 27, 1985
10AM to 5PM
West Orange High
School Gymnasium
Pleasant Valley Way
West Orange, N.J.
ADMISSION FREE

Spring Flea Market

Belleville Eklis
254 Washington Ave.
April 27, 1985
1 P.M. - 5 P.M.
All new merchandise -
discounted. Call
after 6pm. 751-7123

GARAGE SALE

EMILY'S RESALE
Consignment
Open Thursday 5 to 8 pm,
Friday 12 to 4 pm, Sat. 10
am to 5 pm, Sun. 10 am
to 3 pm. Buy one clothing item
and rec. one FREE of equal
value. (With this ad.) 128
Montgomery St., Bloom-
field, N.J. 07001
COMING SOON-NEW
LINE OF MERCHANDISE

Giant multi family Garage Sale

Sale 241-243
Kingsland St., Nutley,
NJ Sat. & Sun. Apr 19 & 20
10AM-4PM. Rain or
shine.

2 Families moving. Furniture, Housewares & Kids stuff 129 Flord St. Belleville. Rain Shine. April 20, 10-4PM.

Household goods sale. Some handcap items. 10 ft steel wheel chair ramp, other items. Appliances & dishes. Sat. April 20, 9-11. 101 Lovell Court, Nutley.

HOUSEHOLD ITEMS - SAT. APRIL 20 9AM-5PM 57 FOREST ST. BELLEVILLE.

WICKER BATTAN PEEL WICKERLAND Furniture - Lamps

Kitchenware • Accessories
Large selection of wicker for
any purpose, of good quality,
sensitively priced.
Stop in and Browse
43A CHURCH STREET
MCDONALD'S
783-0435

PEOPLE'S HEATING CONTRACTORS, INC.

RESIDENTIAL • COMMERCIAL
• Burners & Boilers • Service & Maintenance
• Modernization • Efficiency Testing
Reliable Repair Service
661-1479

PLUMBING & HEATING

J. G. YOUNG & SONS, INC.
PLUMBING & HEATING
State License #684 & #990
Kitchens and Bathrooms Remodeled
Automatic Fire Sprinkler Systems
Gas Heat Hot Water Heaters, Duct Sewer Cleaning
• Commercial • Residential • Industrial
Repairs • Alterations • New Construction
661-1479

CHILD CARE NURSERY SCHOOLS

**Nanny D's
Infant Care Center**
204 Washington Ave.
Belleville
Full Day Sessions, 6
Weeks to 2 years old.
Director, Dolores Aft
759-1524

MEMORIAL DAY OUTDOOR FLEA MARKET

Sponsored by the
Home & School Assoc.
• Dealers, Crafts, Hob-
bies & Homewares •
• HOLY FAMILY
CHURCH
PARKING LOT
28 Brookline Ave.
Nutley, N.J.
Monday, May 27, 1985
7 P.M. - 4 P.M.
Rain Date June 1
10 A.M. - 4 P.M.
• Space Rental &
Information
338-5441 • 759-3347
(after 6 P.M.)
Refreshments
Home Made Cake Sale
5-9

AMERICAN Legion Aux-iliary

Nutley Unit 70,
49 Franklin Ave.
Sun, Apr. 21 & 28
May 12 & 19
June 2 & 9
Tables available.
Call June
751-5752
10AM-4PM

SUPER FLEA-CRAFTIQUE Extravaganza

(Flea, Craft & Antique
Sponsored by
THE ROTARY CLUB
Call June
WEST ORANGE
SATURDAY
APRIL 27, 1985
10AM to 5PM
West Orange High
School Gymnasium
Pleasant Valley Way
West Orange, N.J.
ADMISSION FREE

Spring Flea Market

Belleville Eklis
254 Washington Ave.
April 27, 1985
1 P.M. - 5 P.M.
All new merchandise -
discounted. Call
after 6pm. 751-7123

GARAGE SALE

EMILY'S RESALE
Consignment
Open Thursday 5 to 8 pm,
Friday 12 to 4 pm, Sat. 10
am to 5 pm, Sun. 10 am
to 3 pm. Buy one clothing item
and rec. one FREE of equal
value. (With this ad.) 128
Montgomery St., Bloom-
field, N.J. 07001
COMING SOON-NEW
LINE OF MERCHANDISE

Giant multi family Garage Sale

Sale 241-243
Kingsland St., Nutley,
NJ Sat. & Sun. Apr 19 & 20
10AM-4PM. Rain or
shine.

2 Families moving. Furniture, Housewares & Kids stuff 129 Flord St. Belleville. Rain Shine. April 20, 10-4PM.

Household goods sale. Some handcap items. 10 ft steel wheel chair ramp, other items. Appliances & dishes. Sat. April 20, 9-11. 101 Lovell Court, Nutley.

HOUSEHOLD ITEMS - SAT. APRIL 20 9AM-5PM 57 FOREST ST. BELLEVILLE.

WICKER BATTAN PEEL WICKERLAND Furniture - Lamps

Kitchenware • Accessories
Large selection of wicker for
any purpose, of good quality,
sensitively priced.
Stop in and Browse
43A CHURCH STREET
MCDONALD'S
783-0435

PEOPLE'S HEATING CONTRACTORS, INC.

RESIDENTIAL • COMMERCIAL
• Burners & Boilers • Service & Maintenance
• Modernization • Efficiency Testing
Reliable Repair Service
661-1479

PLUMBING & HEATING

J. G. YOUNG & SONS, INC.
PLUMBING & HEATING
State License #684 & #990
Kitchens and Bathrooms Remodeled
Automatic Fire Sprinkler Systems
Gas Heat Hot Water Heaters, Duct Sewer Cleaning
• Commercial • Residential • Industrial
Repairs • Alterations • New Construction
661-1479

CHILD CARE NURSERY SCHOOLS

**Nanny D's
Infant Care Center**
204 Washington Ave.
Belleville
Full Day Sessions, 6
Weeks to 2 years old.
Director, Dolores Aft
759-1524

MEMORIAL DAY OUTDOOR FLEA MARKET

Sponsored by the
Home & School Assoc.
• Dealers, Crafts, Hob-
bies & Homewares •
• HOLY FAMILY
CHURCH
PARKING LOT
28 Brookline Ave.
Nutley, N.J.
Monday, May 27, 1985
7 P.M. - 4 P.M.
Rain Date June 1
10 A.M. - 4 P.M.
• Space Rental &
Information
338-5441 • 759-3347
(after 6 P.M.)
Refreshments
Home Made Cake Sale
5-9

AMERICAN Legion Aux-iliary

Nutley Unit 70,
49 Franklin Ave.
Sun, Apr. 21 & 28
May 12 & 19
June 2 & 9
Tables available.
Call June
751-5752
10AM-4PM

SUPER FLEA-CRAFTIQUE Extravaganza

(Flea, Craft & Antique
Sponsored by
THE ROTARY CLUB
Call June
WEST ORANGE
SATURDAY
APRIL 27, 1985
10AM to 5PM
West Orange High
School Gymnasium
Pleasant Valley Way
West Orange, N.J.
ADMISSION FREE

Spring Flea Market

Belleville Eklis
254 Washington Ave.
April 27, 1985
1 P.M. - 5 P.M.
All new merchandise -
discounted. Call
after 6pm. 751-7123

GARAGE SALE

EMILY'S RESALE
Consignment
Open Thursday 5 to 8 pm,
Friday 12 to 4 pm, Sat. 10
am to 5 pm, Sun. 10 am
to 3 pm. Buy one clothing item
and rec. one FREE of equal
value. (With this ad.) 128
Montgomery St., Bloom-
field, N.J. 07001
COMING SOON-NEW
LINE OF MERCHANDISE

Giant multi family Garage Sale

Sale 241-243
Kingsland St., Nutley,
NJ Sat. & Sun. Apr 19 & 20
10AM-4PM. Rain or
shine.

2 Families moving. Furniture, Housewares & Kids stuff 129 Flord St. Belleville. Rain Shine. April 20, 10-4PM.

Household goods sale. Some handcap items. 10 ft steel wheel chair ramp, other items. Appliances & dishes. Sat. April 20, 9-11. 101 Lovell Court, Nutley.

HOUSEHOLD ITEMS - SAT. APRIL 20 9AM-5PM 57 FOREST ST. BELLEVILLE.

WICKER BATTAN PEEL WICKERLAND Furniture - Lamps

Kitchenware • Accessories
Large selection of wicker for
any purpose, of good quality,
sensitively priced.
Stop in and Browse
43A CHURCH STREET
MCDONALD'S
783-0435

PEOPLE'S HEATING CONTRACTORS, INC.

RESIDENTIAL • COMMERCIAL
• Burners & Boilers • Service & Maintenance
• Modernization • Efficiency Testing
Reliable Repair Service
661-1479

PLUMBING & HEATING

J. G. YOUNG & SONS, INC.
PLUMBING & HEATING
State License #684 & #990
Kitchens and Bathrooms Remodeled
Automatic Fire Sprinkler Systems
Gas Heat Hot Water Heaters, Duct Sewer Cleaning
• Commercial • Residential • Industrial
Repairs • Alterations • New Construction
661-1479

CHILD CARE NURSERY SCHOOLS

**Nanny D's
Infant Care Center**
204 Washington Ave.
Belleville
Full Day Sessions, 6
Weeks to 2 years old.
Director, Dolores Aft
759-1524

MEMORIAL DAY OUTDOOR FLEA MARKET

Sponsored by the
Home & School Assoc.
• Dealers, Crafts, Hob-
bies & Homewares •
• HOLY FAMILY
CHURCH
PARKING LOT
28 Brookline Ave.
Nutley, N.J.
Monday, May 27, 1985
7 P.M. - 4 P.M.
Rain Date June 1
10 A.M. - 4 P.M.
• Space Rental &
Information
338-5441 • 759-3347
(after 6 P.M.)
Refreshments
Home Made Cake Sale
5-9

AMERICAN Legion Aux-iliary

Nutley Unit 70,
49 Franklin Ave.
Sun, Apr. 21 & 28
May 12 & 19
June 2 & 9
Tables available.
Call June
751-5752
10AM-4PM

SUPER FLEA-CRAFTIQUE Extravaganza

(Flea, Craft & Antique
Sponsored by
THE ROTARY CLUB
Call June
WEST ORANGE
SATURDAY
APRIL 27, 1985
10AM to 5PM
West Orange High
School Gymnasium
Pleasant Valley Way
West Orange, N.J.
ADMISSION FREE

Spring Flea Market

Belleville Eklis
254 Washington Ave.
April 27, 1985
1 P.M. - 5 P.M.
All new merchandise -
discounted. Call
after 6pm. 751-7123

GARAGE SALE

EMILY'S RESALE
Consignment
Open Thursday 5 to 8 pm,
Friday 12 to 4 pm, Sat. 10
am to 5 pm, Sun. 10 am
to 3 pm. Buy one clothing item
and rec. one FREE of equal
value. (With this ad.) 128
Montgomery St., Bloom-
field, N.J. 07001
COMING SOON-NEW
LINE OF MERCHANDISE

Giant multi family Garage Sale

Sale 241-243
Kingsland St., Nutley,
NJ Sat. & Sun. Apr 19 & 20
10AM-4PM. Rain or
shine.

2 Families moving. Furniture, Housewares & Kids stuff 129 Flord St. Belleville. Rain Shine. April 20, 10-4PM.

Household goods sale. Some handcap items. 10 ft steel wheel chair ramp, other items. Appliances & dishes. Sat. April 20, 9-11. 101 Lovell Court, Nutley.

HOUSEHOLD ITEMS - SAT. APRIL 20 9AM-5PM 57 FOREST ST. BELLEVILLE.

WICKER BATTAN PEEL WICKERLAND Furniture - Lamps

Kitchenware • Accessories
Large selection of wicker for
any purpose, of good quality,
sensitively priced.
Stop in and Browse
43A CHURCH STREET
MCDONALD'S
783-0435

PEOPLE'S HEATING CONTRACTORS, INC.

RESIDENTIAL • COMMERCIAL
• Burners & Boilers • Service & Maintenance
• Modernization • Efficiency Testing
Reliable Repair Service
661-1479

PLUMBING & HEATING

J. G. YOUNG & SONS, INC.
PLUMBING & HEATING
State License #684 & #990
Kitchens and Bathrooms Remodeled
Automatic Fire Sprinkler Systems
Gas Heat Hot Water Heaters, Duct Sewer Cleaning
• Commercial • Residential • Industrial
Repairs • Alterations • New Construction
661-1479

CHILD CARE NURSERY SCHOOLS

**Nanny D's
Infant Care Center**
204 Washington Ave.
Belleville
Full Day Sessions, 6
Weeks to 2 years old.
Director, Dolores Aft
759-1524

MEMORIAL DAY OUTDOOR FLEA MARKET

Sponsored by the
Home & School Assoc.
• Dealers, Crafts, Hob-
bies & Homewares •
• HOLY FAMILY
CHURCH
PARKING LOT
28 Brookline Ave.
Nutley, N.J.
Monday, May 27, 1985
7 P.M. - 4 P.M.
Rain Date June 1
10 A.M. - 4 P.M.
• Space Rental &
Information
338-5441 • 759-3347
(after 6 P.M.)
Refreshments
Home Made Cake Sale
5-9

AMERICAN Legion Aux-iliary

Nutley Unit 70,
49 Franklin Ave.
Sun, Apr. 21 & 28
May 12 & 19
June 2 & 9
Tables available.
Call June
751-5752
10AM-4PM

SUPER FLEA-CRAFTIQUE Extravaganza

HELP WANTED

PART TIME

RECEPTIONIST

1PM-6PM

Experience in operation of ROOMS REX 10 key position console. Must be poised and confident in greeting clients and visitors in busy marketing environment. Salary commensurate with experience.

Excellent salary and benefits. Applications accepted by mail to: Room REX 10, 2200 N. 3rd St., Suite 400, Bloomfield, NJ 07003. NO PHONE CALLS. NO INQUIRIES PLEASE.

LCS Industries

120 Brighton Road
Clifton, N.J. 07012
Equal Opportunity Employer M/F

CLERK TYPIST
PROVIDENT SAVINGS BANK
BLOOMFIELD CENTER
Full time positions. Plush office. Exp. reg. Gd typing skills. Gd communications ability. Exp. salary & benefits. Excellent opportunity. Call 795-3780.
Equal opportunity employer M/F H/V member F.D.I.C.

EARN EXTRA MONEY!

The amount is up to you. We are looking for people interested in:
• Improving their lifestyle
• Improving their health
• Helping others
• Making money
The choice is up to you. Let us show you how. Call Gerri at 866-2683

OFFICE ASSISTANT

Manufacturer by Newark Airport needs well organized part time office assistant. Duties include maintaining inventory & monitoring deliveries. Hours RA M-F 9:00 am - 5:00 pm. Call Gerri at 866-2683

CLERK - FULL TIME

\$4.00 per hour. Company benefits. Delawanna area. Call Larry 778-4666

REAL ESTATE SALESPERSONS AND BROKERS

Licensed classes now featuring GARDEN STATE SCHOOL OF REAL ESTATE
211 Bloomfield Ave.
Verona
For information call 228-1212 or 31-9687

CLERK TYPISTS

If you are seeking a change from your present "no-hum" position and are interested in becoming a member of a stable, expanding company, we may have a position for you.

We are in need of career-minded, self-starters. For overall positions, candidates must possess good typing and communication skills, be comfortable working with figures, and possess personal responsibility.

We offer a competitive starting salary, company-paid benefits program and an opportunity to grow from within.

For immediate consideration, please call (201) 481-4800, ext. 224

HARTZ MOUNTAIN

700 SOUTH 4TH ST.
HARRISON, N.J.

Equal Opportunity Employer m/f

Models Children

6 mos to 16 yrs
Complex IV now seeking children for catalog brochure & TV productions. Most assignments N.J. facility. No experience necessary. For Appt. Call (201) 882-9150
Complex IV
15 Gloria Lane
Fairfield, N.J. 07006
N.J. State Lic. E.O.E.

SECRETARY

Condo construction Co seeks secretary with good office skills. Must be able to type & take shorthand. Modern office with good opportunity for ambitious individual.
Telephone 968-4253

HELPER

Full or part time to do light house work & care-taking. Experience helpful, but will train. Call between 6PM-7PM 867-1776

TELEPHONE SOLICITOR

Full time evenings Monday thru Thurs. FROM BLOOMFIELD OFFICE. NO SALES. SET APPOINTMENTS FOR OUR SALES PEOPLE. SOME EXPERIENCE PREFERRED. Call 745-1001

HELP WANTED

PART TIME

FOR BEAUTY SUPPLY STORE FLEXIBLE HOURS REQUIRED

FOR BEAUTY SUPPLY STORE FLEXIBLE HOURS REQUIRED. FINE BEAUTY KNOWLEDGE HELPFUL.
Call 748-4823

SECRETARY

Temporary part time position for sales dept. Store Entry level, good math aptitude a must. Call 667-1900 for appt.

CLERK

To assist A.P. bookkeeper at Janette Nutley Center. Entry level, good math aptitude a must. Call 667-1900 for appt.

MANICURIST

Full time. Must be licensed. For New Nutley nail salon. Experience preferred. Salary & commission.
Call 235-0069

MAIDS/PORTER FULL & PART TIME

Excellent company benefits which include Blue Cross, Blue Shield, dental, optical, prescription plan, paid holidays, etc. Apply in person only to:

JAN SWANDER
RAMADA INN
Rt. 3 East, Clifton, N.J.
bet. 9 am - 2 pm/3/28

DRIVER/Warehouseman

Person needed to drive med. size truck & do some warehouse work. Must have clear driving record. Full company paid bnf. Int'l. driving opening. Call for interview. 481-5545 ask for Jasper.

Secretary, F.T.

Maplewood area. Good typing & stenographic skills. Excellent benefits. Call 762-2392 Ext. 18.

E.O.E.

Yorkwood Savings & Loan Assoc.

SECRETARIES

HOUSE COUNSEL TO MAJOR INSURANCE CO. IN ORANGE SEeks SECRETARIES WITH EXCELLENT TYPING SKILLS WILL TRAIN. EXCELLENT BENEFITS. SALARY COMMENSURATE WITH EXPERIENCE. CALL BETTI CROFF AT 731-4292

CLERK TYPIST Accounts Receivable (TEMPORARY)

Temporary position for individual with 50-60 wpm typing skills. (no statistical typing) Must have aptitude for figures and willingness to do other clerical duties including filing.

We offer excellent salaries and on paid benefits including tuition aid.

Call W. Rembold
Personnel Dept.
201-758-0000

Wallace & Tierman Div.
PENNYWALT CORPORATION
25 Main St.
Belleville, NJ 07109

An Equal Opportunity Employer

P.T. Sales \$7.00 hr. guaranteed plus bonuses.

Work 15 to 20 hrs. evening & weekends. Experience necessary. 661-9225. Call evenings & weekends.

AIRLINES NOW HIRING

Reservationists stewardesses and ground crew positions available. Call 1-619-569-0241 for details 24 hrs.

NIGHT TIME EMPLOYMENT

For filling counters. Hours 10pm to 2am. Must be able to type. Apply Thursdays between 2-4 pm.
K-MART
371 Main St.
Belleville

SWITCHBOARD TYPIST

Full time. Experience on switchboard with good typing skills. Salary open. Standard benefits. Call Mrs. Newton 483-2960 between 9 am & 4:30 pm.

BURGER KING is now

accepting applications for permanent positions during the day & closing shift. Call for appt. 881 Franklin Ave. Nutley bet. hrs. of 2 & 4.

BINDER WORKERS

HAND AND MACHINE OPERATIONS IN BELLEVILLE PRINT SHOP. 729-1820 ASK FOR MARIE.

HELP WANTED

TYPESETTER

EXPERIENCE HELPFUL. NUTLEY AREA. FLEXIBLE HOURS. DAYS/EVENINGS. WILL TRAIN GOOD TYPIST.

CALL 667-2100

CAROL

OUTSIDE CLASSIFIED SALES REPRESENTATIVE

Lucrative full time position. Must be sales minded. Advertising background preferred but not required.

Call 667-3000

Ask for Sal

PART TIME TELEPHONE SALES

Sell your #1 local newspaper. Part-time evenings and Saturday mornings. Guaranteed salary plus bonus.

Call 667-2100

CLERK

Full time. Must be licensed. For New Nutley nail salon. Experience preferred. Salary & commission.

CLERK

Full time. Must be licensed. For New Nutley nail salon. Experience preferred. Salary & commission.

CLERK

Full time. Must be licensed. For New Nutley nail salon. Experience preferred. Salary & commission.

CLERK

Full time. Must be licensed. For New Nutley nail salon. Experience preferred. Salary & commission.

CLERK

Full time. Must be licensed. For New Nutley nail salon. Experience preferred. Salary & commission.

CLERK

Full time. Must be licensed. For New Nutley nail salon. Experience preferred. Salary & commission.

CLERK

Full time. Must be licensed. For New Nutley nail salon. Experience preferred. Salary & commission.

CLERK

Full time. Must be licensed. For New Nutley nail salon. Experience preferred. Salary & commission.

CLERK

Full time. Must be licensed. For New Nutley nail salon. Experience preferred. Salary & commission.

CLERK

Full time. Must be licensed. For New Nutley nail salon. Experience preferred. Salary & commission.

CLERK

Full time. Must be licensed. For New Nutley nail salon. Experience preferred. Salary & commission.

CLERK

Full time. Must be licensed. For New Nutley nail salon. Experience preferred. Salary & commission.

CLERK

Full time. Must be licensed. For New Nutley nail salon. Experience preferred. Salary & commission.

CLERK

Full time. Must be licensed. For New Nutley nail salon. Experience preferred. Salary & commission.

CLERK

Full time. Must be licensed. For New Nutley nail salon. Experience preferred. Salary & commission.

CLERK

Full time. Must be licensed. For New Nutley nail salon. Experience preferred. Salary & commission.

CLERK

Full time. Must be licensed. For New Nutley nail salon. Experience preferred. Salary & commission.

CLERK

Full time. Must be licensed. For New Nutley nail salon. Experience preferred. Salary & commission.

CLERK

Full time. Must be licensed. For New Nutley nail salon. Experience preferred. Salary & commission.

CLERK

Full time. Must be licensed. For New Nutley nail salon. Experience preferred. Salary & commission.

HELP WANTED

RECEPTIONIST/ SWITCHBOARD

Expert to handle busy switchboard. Must possess excellent communication skills, neat & personable for front desk. Also includes various clerical duties.
Call 284-1133

TEMPORARY COUNTER HELP/CLERK

For declassification. Please apply in person at: Watching Deli 117 Washington Road Montclair 744-1452

TELLER \$200

Mj. N.J. bank has 3 openings for indiv. w/ teller exp. Pos offers advance. Exc bnf. Lovely locations. F.p.d. Call Kathy Phillips at 743-1614

NATIONAL PERSONNEL

547 Bloomfield Ave. Bloomfield

TRUCK DRIVER WAREHOUSE PERSON

APPLY IN PERSON 291 Cortland Street Belleville Call 751-1300

MUFFLER INSTALLER SOME MECHANICAL EXPER. WILL TRAIN.

229-9494

CLERICAL

Temporary-Part time. 4 hrs. flex. exp. for an appointment. 239-9000

ANNIN & CO.

Verona, N.J. M.F.

RECEIPTS \$225-\$250 LOCAL

I have several openings for receipts. Switchboard, typ. word proc. & Exc. Co. w/ g.d. bnf. F.p.d. Call Kathy Phillips at 743-1814

NATIONAL PERSONNEL

547 Bloomfield Ave. Bloomfield

ELECTRONIC ASSEMBLERS

PT/FT Flex hrs. exp. Military Spec assemblies. Set own work schedule in a variety of tasks.

PT/FT Flex hrs. exp. Military Spec assemblies

Set own work schedule in a variety of tasks. Call TODAY 751-2200

MEDICAL SECRETARY OR L.P.N. PART TIME DUTIES IN DR'S OFFICE

Call 667-9489

GIRL GUY FRIDAY

P.T. M/F 5 v. exp. Diversified duties. Const exp. helpful. 3 days. H.A.M.-77 M. 667-9576

GOVERNMENT JOBS

\$15,000-\$50,000 yr. possible. All occupations. Call 1-800-667-6000 Ext. R-7100 to find out how.

BUS PERSON WANTED

EXPERIENCED PHOTOCOPYING. RED. EXCELLENT BENEFITS. ELEGANT RESTAURANT. 661-3316

Local law firm seeks

foreclosure and experience clerical. Salary commensurate with experience. Call May 743-3529

WORK FROM HOME ON THE TELEPHONE

SERVING OUR CUSTOMERS. Call 998-7216

997-8086

\$4.00 per hour plus comm. \$15.00 per hr. potential. Mornings & Evening shift. Telephone Sales. 4/19

SECY 4182

Natl. Dir. seeks secy for director. Gd. secy skills. Responsible position. F.p.d. Call Kathy Phillips at 743-1614

NATIONAL PERSONNEL

547 Bloomfield Ave. Bloomfield

SECRETARY

MONTECLAIR PERMANENT. AVERAGE 20 HOURS WEEK. FLEXIBLE OFFICE. VARIOUS DUTIES. NO EXPERIENCE NECESSARY. MR. ADAMS 746-1806

COMPUTER TYPESETTER

High school graduates interested in pursuing a rewarding career business. Must have good typing skills, computer knowledge not necessary but helpful. Will train. Good benefits.

Call for appt.

67-1556 Mon. thru Fri.

HELP WANTED

BARTENDER & CHEF

Experience preferred. Apply in person. PAT & FRANK'S PUB 190 Passaic Ave. Belleville

COCKTAIL WAITRESS

PART TIME WEEKEND NITES. FRI & SAT. 429-9246

WAITER & WAITRESS

PART TIME, DAYS & AVAILABLE. CALL. 429-9246

BUS PERSON

PART TIME DAYS 429-9246

PREP COOK

EXPERIENCE, NECESSARY. FLEXIBLE HOURS. GOOD STARTING SALARY. 429-9246

Check out operators

wanted, morning afternoons, even shifts. Applications taken. Thurs. 2-4pm.

K-MART

371 Main St. Belleville

Girl Friday

PT/PT. K-MART 371 Main St. Belleville. Applications Taken Thurs. 2-4pm. See Personnel 5/9

ORDER DEPT PERSON REQUIRED

TO PROCESS ORDERS. 10 hrs. flex. exp. BENEFITS IN PLEASANT CLIMATE. CLINTON OFFICE FOR APPT. CALL LENORE 471-2800

SITUATIONS WANTED

HOMEMAKER. COMPTON. LIGHT HOUSE WORK. FOR ELDERLY PERSON. Call 759-9496

Young mother of one

child, home work. Preferably 24 hrs. per day. Would consider life typing, envelope addressing, stuffing, small assembly work etc. No phone work please. Send resume to: Mrs. J. PO Box 287 Little Falls, NJ 07424

LOST & FOUND

Lost in Municipal Parking Lot in Nutley. Men's wallet contains personal papers, credit cards, etc. Owner will appreciate its return to: Mike Duffy Sandpiper Condos, Apt. 3D Rt 40 West, Ways Landing, N.J. 08330

Lost 16' held 'S' Chain

over weekend in vicinity of Nutley Shoprite in Our Lady of Mt. Carmel Church. Sentimental Value! Large Reward! 225-1349 Eves 338-4254

PETS

Please adopt 4 yr. old Afghan. Loveable. Pedigree. Moving. Call Keep 667-7117 or 483-2959

INSTRUCTIONS

NEED A MATH TUTOR? Call 751-5150 ANYTIME

CAKE DECORATING

Classes made easy by Walter Calkins Decorator using the Wilton method. Michael's The Master Cake Magician School of Cake Decorating 677-2788 or 667-3341

MUSIC TEACHER

Also professional music copyist. Now accepting new students for Flute, Saxophone, Clarinet, Guitar, Bass Guitar, in your home. Please call 338-1855

Professional KARATE instruction

Class or private lessons, beginners through advanced. 5th Degree belt. Mike Pollard 338-3172

FOR RENT

APARTMENTS WANTED

ATTENTION LANDLORDS! We have many qualified tenants that are screened and waiting for apartments or homes. You can choose that special tenant at no cost to you. For information call Tony Garcia.

MARZULLI REALTORS

264 Belleville Ave. Bloomfield, N.J. 743-2306

BLOOMFIELD

3 rm luxury garden. Vacant. \$600 per mo incl heat, hot water, carpeting, appliances.

1 1/2 rm garden apt. Avail. \$1,500 incl heat & hot water.

Luxury condo-4 rms. Avail. \$61,650 incl heat & hot water.

TO INSPECT CALL

Arthur L. Grutt, Realtor

GLENWOOD Real Estate Agency

429-7380

905 BROAD ST., BLOOMFIELD

MONTCLAIR

5 ROOM OFFICE SUITE. Prime location 1200 sq ft. Ideal for engineer, architect, lawyer. 100 per sq. ft. - all utilities. Avail. immed.

LA SPACE & CO. REALTORS

417 Watching Plaza Montclair 746-4416

UNION: HOUSE FOR

RENT. 2 bedroom Cape Cod. Nice area. 9500 per month. 2 utilities. Call 667-3781 or 667-0483.

BELLEVILLE

24 Belleville Ave. NUTLEY. We have many studios, 1 & 2 bedroom apts. Avail. May 1 & June 1.

Call Realtor

★ MARZULLI★ 264 Belleville Ave. Bloomfield, N.J. 743-2306

PROFESSIONAL OFFICE SPACE FOR RENT

800 SQ FT NEWLY RENOVATED EXCELLENT LOCATION. ULTRA MODERN BUILDING. 226-8758

BELLEVILLE

3 1/2 rms garsl apt. H. W. & gas incl. Plus laundry & prkg. fac. Avail. July 1st. \$477 mo.

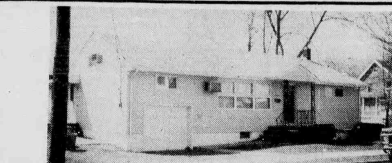
REAL ESTATE REAL ESTATE REAL ESTATE REAL ESTATE REAL ESTATE REAL ESTATE REAL ESTATE REAL ESTATE REAL ESTATE

180 Centre St.
Nutley, N.J. 07110
667-3440

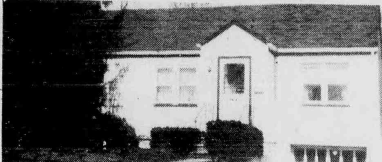
G EORGE E. M AC M UNN C O.

REALTORS

100 Woodport Road
Sparta, N.J. 07871
729-8727



ONE FLOOR LIVING w/rear deck and 3 bedrooms in NUTLEY - finished family room with extra 1/2 bath. ASKING \$109,000. YOUR OFFER MAY TAKE IT!!!



NUTLEY - ADORABLE 2 BEDROOM RANCH on 50x120 lot overlooking PARK. Large Liv. Rm. with dining area, full basement, completely maint. free. OWNER LEAVING FOR CALIF. - YOUR OFFER MAY TAKE IT!!!

Your Home
Could Be
Featured
Here.
List With
Mac Munn

Look for This Emblem



JUST LISTED - NUTLEY - CUSTOM BUILT extra large cape with formal din. rm., frpl in liv. rm., huge mod kit, 1 1/2 baths, 3 big bedrooms + beautiful REDWOOD FAMILY ROOM. CALL FOR DETAILS!!!



LAKE MOHAWK - WEST SHORE on 82x238 landscaped lot, Liv. Rm. w/frpl., 16x14 Din. Rm., mod kit & bath, fam. rm. w/sliders to patio. JUST LISTED AT \$102,900.

STAGE DOOR

You can afford this! 2 family, brick row house, 3 + 4 rooms. Taxes only \$1,040. Thermo windows. Near parkway and N.Y. bus. Asking \$75,000. Call today for appointment to see!

Wayne K. Thomas REALTORS

277 Broad Street - Bloomfield, New Jersey
(201) 429-7400

Each office independently owned and operated
MEMBER OF BLOOMFIELD GLEN RIDGE, NUTLEY, BELLEVILLE BOARD OF REALTORS

REAL ESTATE
FOR SALE

BLOOMFIELD
FIRST TIME OFFERED
DUTCH COLONIAL-7
rms incl 4 bdrms with 2
new full baths, natural
wood trim, w.w. carp.
garage, alum siding.
Move-in-cond. Asking
\$114,900. A MUST SEE!
CENTRE REALTY
OF NUTLEY
REALTOR 667-5100

REAL ESTATE
WANTED TO RENT

Recently retired couple
needs 4 or 5 room apt. No
pets. Bloomfield area.
FD-5044 4-18

WANTED 2 or 3 rooms.
Moderately priced in
Nutley, Belleville, or
Bloomfield, area. For
single female. Call
between 6 & 8pm. 751-
1843

FURNISHED ROOMS
ARCHITECTURE
& PLANNING
HOME & BUILDING
INSTRUCTIONS
KENNETH J.
STOYACK, AIA
REGISTERED
N.J. ARCHITECT
661-2708

BELLEVILLE
FURNISHED ROOM.
\$65.00 WKLY. SOME
PRIVILEGES. A/C
YOUNG BUSINESS
MAN PREFERRED.
CALL 759-7949

**SUMMER
RENTALS**

**VACATION HOME IN
PENNSYLVANIA**
SWIMMING POOL,
SLEEP SIX, FULLY
EQUIPPED. NEAR
LAKE. CALL 372-8006.

**ORTLEY BEACH, 4TH
FLOOR FROM OCEAN.**
SLEEPS SIX. CALL 955-
1588

**SUMMER CHALET-
POCONO, 3
BEDROOMS WITH
LOFT & WOODBURN
ING STOVE. PRIVATE
HOMES, SWIMMING,
TENNIS & OTHER AC-
TIVITIES. CALL TONY
667-9377/235-3822**

OPEN HOUSE
Sat. April 20 at
640 Franklin Ave. Nutley
Unit E-1. 12 noon-3 p.m.

RESOLUTION
Whereas, The Free Public Library of Nutley,
New Jersey requires the professional services of
an Architect to consult with and advise the
Library, and
Whereas, The Local Public Contract Law (N.J.S.A. 40A:11-1 et seq) requires that the
resolution authorizing the award of contracts for
"Professional Services" without competitive bid
must be publicly advertised and the contract
filed with the County of Essex, and
Whereas, Said Architect, James Goldstein &
Partners, meets the requirements of the Local
Public Contract Law (N.J.S.A. 40A:11-1 et seq)
permitting the awarding of contracts for
Professional Services without competitive bid-
ding, and
Whereas, The maximum compensation for
such professional services shall not exceed
Eight thousand five hundred dollars.
Now, Therefore, Be It Resolved That the
President and Library Director are hereby
authorized to enter into and execute the at-
tached agreement with James Goldstein &
Partners.

Be it further resolved, That notice of this ac-
tion be published once in the Nutley Sun and
filed with the Township Clerk.
Adopted this 26th of February, 1985
Susan W. Persak
Secretary Pro Tem

The Nutley Sun
Apr. 18, 1985
Fee: \$16.39

SEASHORE PROPERTY
CORINE
CONDOS
\$47,900-\$56,900
**ORTLEY-
SEASIDE**

1 Bedroom
1 Block from
Ocean & Houses
of Worship
Financing
Available
OPEN 7 DAYS
FOR INSPECTION
CALL
(201) 830-1108

The Nutley Sun
Apr. 18, 1985
Fee: \$16.39

No. N85-155

LIST YOUR HOME WITH US.
We can help you get the most money

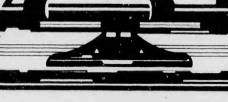
WE GET RESULTS
Here's Why:

- 3,000 potential prospects in our file
- Area leader in home sales
- Experienced specialists ready to sell your home
- Free Home Warranty Protection plan
- Relocation service
- Financing to help every qualified buyer
- Member Multiple listing service

**WANT TO KNOW WHAT YOUR
HOME IS WORTH?**

**Call Us Today for a
FREE EVALUATION**

govel
REALTORS
727 Jaramela Street
Belleville, N.J.
(201) 751-7500



SHERIFF'S SALE
SUPERIOR COURT OF NEW JERSEY,
CHANCERY DIVISION, ESSEX COUNTY,
DOCKET NO. F-10272-84 GLEN RIDGE SAV-
INGS AND LOAN ASSOCIATION, a
New Jersey Corporation, PLAINTIFF vs. MICHAEL
VIGGIANO and LIDIA R. VIGGIANO, his wife,
et al, DEFENDANTS. Execution For Sale of
Mortgaged Premises.

By virtue of the above stated writ of Execution,
to me directed, I shall expose for sale by
Public Auction, in SHERIFF'S OFFICE, Essex
County, County Building in Newark, on Tues-
day, the 7th day of May next, at one-thirty
P.M. (Prevaling Time)

Street Address: 114 Myrtle Street, Bloom-
field, New Jersey.
Lot 52
Block 123
Dimensions of Property: 39.07' x 130' x
37.43' x 129.76'

Distance to Nearest Intersection: 277.72
feet easterly from the intersection of Myrtle
and Prospect Street. Recording information of
mortgage: Essex County Register's Office on
March 3, 1976, in Book 4653 of Mortgages
for said County, Page 317.

The approximate amount of the Judgment to
be satisfied by sale is the sum of
FIFTY EIGHT THOUSAND TWO HUNDRED
FIFTY EIGHT DOLLARS AND SEVENTY CENTS
(\$58,258.70), together with the costs of this
P.M. (Prevaling Time)

The Sheriff reserves the right to adjourn the sale
from time to time as provided by Law.
Newark, N.J. April 11, 1985
THOMAS J. D'ALESSIO, Sheriff
Booth, Bate and Gracie, Attorneys

The Nutley Sun
Apr. 11, 1985
May 2, 1985
Fee: \$83.64

No. N85-139

SHERIFF'S SALE
SUPERIOR COURT OF NEW JERSEY,
CHANCERY DIVISION, ESSEX COUNTY,
DOCKET NO. F-8359-84 EVERETT SIMMONS,
CHANCERY DIVISION, ESSEX COUNTY,
DOCKET NO. F-8359-84 EVERETT SIMMONS,
PLAINTIFF vs. ROBERT PERMAN and STATE
OF NEW JERSEY, DEFENDANTS. Execution
For Sale of Mortgaged Premises.

By virtue of the above stated writ of Execution,
to me directed, I shall expose for sale by
Public Auction, in SHERIFF'S OFFICE, Essex
County, County Building in Newark, on Tues-
day, the 7th day of May next, at one-thirty
P.M. (Prevaling Time)

City of East Orange.
The approximate amount of the Judgment to
be satisfied by sale is the sum of
SEVENTY-FIVE DOLLARS AND SIXTY-TWO
CENTS (\$75.62), together with the costs of
this sale.

The Sheriff reserves the right to adjourn the sale
from time to time as provided by Law.
Newark, N.J. March 25, 1985
THOMAS J. D'ALESSIO, Sheriff
Beck, D'Elia & Rosenberg, Attorneys

The Nutley Sun
Apr. 11, 1985
May 2, 1985
Fee: \$75.20

No. B085-14

SHERIFF'S SALE
SUPERIOR COURT OF NEW JERSEY,
CHANCERY DIVISION, ESSEX COUNTY,
DOCKET NO. F-8359-84 EVERETT SIMMONS,
CHANCERY DIVISION, ESSEX COUNTY,
DOCKET NO. F-8359-84 EVERETT SIMMONS,
PLAINTIFF vs. ROBERT PERMAN and STATE
OF NEW JERSEY, DEFENDANTS. Execution
For Sale of Mortgaged Premises.

By virtue of the above stated writ of Execution,
to me directed, I shall expose for sale by
Public Auction, in SHERIFF'S OFFICE, Essex
County, County Building in Newark, on Tues-
day, the 30th day of April next, at one-thirty
P.M. (Prevaling Time) all the right title and in-
terest of the above named Defendant, Harry
Amprazis, in and to all the following
described land located in the Township of
West Orange, Essex County, New Jersey:

BEGINNING at a point in the easterly line
of Hickory Road distance along there some
thence 11) south 67 degrees 5 minutes 55 se-
conds east along said dividing line 125 feet;
thence 12) northerly on a curve to the left hav-
ing a radius of 740.90 feet, an arc distance of
80.72 feet to the dividing line between lots
#21 and #22 in Block 164-C on map hereinafter mentioned and running
thence 13) south 67 degrees 5 minutes 55 se-
conds east along said dividing line 125 feet;
thence 14) northerly on a curve to the left hav-
ing a radius of 740.90 feet, an arc distance of
80.72 feet to the dividing line between lots
#21 and #22 in Block 164-C on the map hereinafter mentioned and running
thence 15) south 67 degrees 5 minutes 55 se-
conds east along said dividing line 125 feet;
thence 16) northerly on a curve to the left hav-
ing a radius of 740.90 feet, an arc distance of
80.72 feet to the dividing line between lots
#21 and #22 in Block 164-C on the map hereinafter mentioned and running
thence 17) south 67 degrees 5 minutes 55 se-
conds east along said dividing line 125 feet;
thence 18) northerly on a curve to the left hav-
ing a radius of 740.90 feet, an arc distance of
80.72 feet to the dividing line between lots
#21 and #22 in Block 164-C on the map hereinafter mentioned and running
thence 19) south 67 degrees 5 minutes 55 se-
conds east along said dividing line 125 feet;
thence 20) northerly on a curve to the left hav-
ing a radius of 740.90 feet, an arc distance of
80.72 feet to the dividing line between lots
#21 and #22 in Block 164-C on the map hereinafter mentioned and running
thence 21) south 67 degrees 5 minutes 55 se-
conds east along said dividing line 125 feet;
thence 22) northerly on a curve to the left hav-
ing a radius of 740.90 feet, an arc distance of
80.72 feet to the dividing line between lots
#21 and #22 in Block 164-C on the map hereinafter mentioned and running
thence 23) south 67 degrees 5 minutes 55 se-
conds east along said dividing line 125 feet;
thence 24) northerly on a curve to the left hav-
ing a radius of 740.90 feet, an arc distance of
80.72 feet to the dividing line between lots
#21 and #22 in Block 164-C on the map hereinafter mentioned and running
thence 25) south 67 degrees 5 minutes 55 se-
conds east along said dividing line 125 feet;
thence 26) northerly on a curve to the left hav-
ing a radius of 740.90 feet, an arc distance of
80.72 feet to the dividing line between lots
#21 and #22 in Block 164-C on the map hereinafter mentioned and running
thence 27) south 67 degrees 5 minutes 55 se-
conds east along said dividing line 125 feet;
thence 28) northerly on a curve to the left hav-
ing a radius of 740.90 feet, an arc distance of
80.72 feet to the dividing line between lots
#21 and #22 in Block 164-C on the map hereinafter mentioned and running
thence 29) south 67 degrees 5 minutes 55 se-
conds east along said dividing line 125 feet;
thence 30) northerly on a curve to the left hav-
ing a radius of 740.90 feet, an arc distance of
80.72 feet to the dividing line between lots
#21 and #22 in Block 164-C on the map hereinafter mentioned and running
thence 31) south 67 degrees 5 minutes 55 se-
conds east along said dividing line 125 feet;
thence 32) northerly on a curve to the left hav-
ing a radius of 740.90 feet, an arc distance of
80.72 feet to the dividing line between lots
#21 and #22 in Block 164-C on the map hereinafter mentioned and running
thence 33) south 67 degrees 5 minutes 55 se-
conds east along said dividing line 125 feet;
thence 34) northerly on a curve to the left hav-
ing a radius of 740.90 feet, an arc distance of
80.72 feet to the dividing line between lots
#21 and #22 in Block 164-C on the map hereinafter mentioned and running
thence 35) south 67 degrees 5 minutes 55 se-
conds east along said dividing line 125 feet;
thence 36) northerly on a curve to the left hav-
ing a radius of 740.90 feet, an arc distance of
80.72 feet to the dividing line between lots
#21 and #22 in Block 164-C on the map hereinafter mentioned and running
thence 37) south 67 degrees 5 minutes 55 se-
conds east along said dividing line 125 feet;
thence 38) northerly on a curve to the left hav-
ing a radius of 740.90 feet, an arc distance of
80.72 feet to the dividing line between lots
#21 and #22 in Block 164-C on the map hereinafter mentioned and running
thence 39) south 67 degrees 5 minutes 55 se-
conds east along said dividing line 125 feet;
thence 40) northerly on a curve to the left hav-
ing a radius of 740.90 feet, an arc distance of
80.72 feet to the dividing line between lots
#21 and #22 in Block 164-C on the map hereinafter mentioned and running
thence 41) south 67 degrees 5 minutes 55 se-
conds east along said dividing line 125 feet;
thence 42) northerly on a curve to the left hav-
ing a radius of 740.90 feet, an arc distance of
80.72 feet to the dividing line between lots
#21 and #22 in Block 164-C on the map hereinafter mentioned and running
thence 43) south 67 degrees 5 minutes 55 se-
conds east along said dividing line 125 feet;
thence 44) northerly on a curve to the left hav-
ing a radius of 740.90 feet, an arc distance of
80.72 feet to the dividing line between lots
#21 and #22 in Block 164-C on the map hereinafter mentioned and running
thence 45) south 67 degrees 5 minutes 55 se-
conds east along said dividing line 125 feet;
thence 46) northerly on a curve to the left hav-
ing a radius of 740.90 feet, an arc distance of
80.72 feet to the dividing line between lots
#21 and #22 in Block 164-C on the map hereinafter mentioned and running
thence 47) south 67 degrees 5 minutes 55 se-
conds east along said dividing line 125 feet;
thence 48) northerly on a curve to the left hav-
ing a radius of 740.90 feet, an arc distance of
80.72 feet to the dividing line between lots
#21 and #22 in Block 164-C on the map hereinafter mentioned and running
thence 49) south 67 degrees 5 minutes 55 se-
conds east along said dividing line 125 feet;
thence 50) northerly on a curve to the left hav-
ing a radius of 740.90 feet, an arc distance of
80.72 feet to the dividing line between lots
#21 and #22 in Block 164-C on the map hereinafter mentioned and running
thence 51) south 67 degrees 5 minutes 55 se-
conds east along said dividing line 125 feet;
thence 52) northerly on a curve to the left hav-
ing a radius of 740.90 feet, an arc distance of
80.72 feet to the dividing line between lots
#21 and #22 in Block 164-C on the map hereinafter mentioned and running
thence 53) south 67 degrees 5 minutes 55 se-
conds east along said dividing line 125 feet;
thence 54) northerly on a curve to the left hav-
ing a radius of 740.90 feet, an arc distance of
80.72 feet to the dividing line between lots
#21 and #22 in Block 164-C on the map hereinafter mentioned and running
thence 55) south 67 degrees 5 minutes 55 se-
conds east along said dividing line 125 feet;
thence 56) northerly on a curve to the left hav-
ing a radius of 740.90 feet, an arc distance of
80.72 feet to the dividing line between lots
#21 and #22 in Block 164-C on the map hereinafter mentioned and running
thence 57) south 67 degrees 5 minutes 55 se-
conds east along said dividing line 125 feet;
thence 58) northerly on a curve to the left hav-
ing a radius of 740.90 feet, an arc distance of
80.72 feet to the dividing line between lots
#21 and #22 in Block 164-C on the map hereinafter mentioned and running
thence 59) south 67 degrees 5 minutes 55 se-
conds east along said dividing line 125 feet;
thence 60) northerly on a curve to the left hav-
ing a radius of 740.90 feet, an arc distance of
80.72 feet to the dividing line between lots
#21 and #22 in Block 164-C on the map hereinafter mentioned and running
thence 61) south 67 degrees 5 minutes 55 se-
conds east along said dividing line 125 feet;
thence 62) northerly on a curve to the left hav-
ing a radius of 740.90 feet, an arc distance of
80.72 feet to the dividing line between lots
#21 and #22 in Block 164-C on the map hereinafter mentioned and running
thence 63) south 67 degrees 5 minutes 55 se-
conds east along said dividing line 125 feet;
thence 64) northerly on a curve to the left hav-
ing a radius of 740.90 feet, an arc distance of
80.72 feet to the dividing line between lots
#21 and #22 in Block 164-C on the map hereinafter mentioned and running
thence 65) south 67 degrees 5 minutes 55 se-
conds east along said dividing line 125 feet;
thence 66) northerly on a curve to the left hav-
ing a radius of 740.90 feet, an arc distance of
80.72 feet to the dividing line between lots
#21 and #22 in Block 164-C on the map hereinafter mentioned and running
thence 67) south 67 degrees 5 minutes 55 se-
conds east along said dividing line 125 feet;
thence 68) northerly on a curve to the left hav-
ing a radius of 740.90 feet, an arc distance of
80.72 feet to the dividing line between lots
#21 and #22 in Block 164-C on the map hereinafter mentioned and running
thence 69) south 67 degrees 5 minutes 55 se-
conds east along said dividing line 125 feet;
thence 70) northerly on a curve to the left hav-
ing a radius of 740.90 feet, an arc distance of
80.72 feet to the dividing line between lots
#21 and #22 in Block 164-C on the map hereinafter mentioned and running
thence 71) south 67 degrees 5 minutes 55 se-
conds east along said dividing line 125 feet;
thence 72) northerly on a curve to the left hav-
ing a radius of 740.90 feet, an arc distance of
80.72 feet to the dividing line between lots
#21 and #22 in Block 164-C on the map hereinafter mentioned and running
thence 73) south 67 degrees 5 minutes 55 se-
conds east along said dividing line 125 feet;
thence 74) northerly on a curve to the left hav-
ing a radius of 740.90 feet, an arc distance of
80.72 feet to the dividing line between lots
#21 and #22 in Block 164-C on the map hereinafter mentioned and running
thence 75) south 67 degrees 5 minutes 55 se-
conds east along said dividing line 125 feet;
thence 76) northerly on a curve to the left hav-
ing a radius of 740.90 feet, an arc distance of
80.72 feet to the dividing line between lots
#21 and #22 in Block 164-C on the map hereinafter mentioned and running
thence 77) south 67 degrees 5 minutes 55 se-
conds east along said dividing line 125 feet;
thence 78) northerly on a curve to the left hav-
ing a radius of 740.90 feet, an arc distance of
80.72 feet to the dividing line between lots
#21 and #22 in Block 164-C on the map hereinafter mentioned and running
thence 79) south 67 degrees 5 minutes 55 se-
conds east along said dividing line 125 feet;
thence 80) northerly on a curve to the left hav-
ing a radius of 740.90 feet, an arc distance of
80.72 feet to the dividing line between lots
#21 and #22 in Block 164-C on the map hereinafter mentioned and running
thence 81) south 67 degrees 5 minutes 55 se-
conds east along said dividing line 125 feet;
thence 82) northerly on a curve to the left hav-
ing a radius of 740.90 feet, an arc distance of
80.72 feet to the dividing line between lots
#21 and #22 in Block 164-C on the map hereinafter mentioned and running
thence 83) south 67 degrees 5 minutes 55 se-
conds east along said dividing line 125 feet;
thence 84) northerly on a curve to the left hav-
ing a radius of 740.90 feet, an arc distance of
80.72 feet to the dividing line between lots
#21 and #22 in Block 164-C on the map hereinafter mentioned and running
thence 85) south 67 degrees 5 minutes 55 se-
conds east along said dividing line 125 feet;
thence 86) northerly on a curve to the left hav-
ing a radius of 740.90 feet, an arc distance of
80.72 feet to the dividing line between lots
#21 and #22 in Block 164-C on the map hereinafter mentioned and running
thence 87) south 67 degrees 5 minutes 55 se-
conds east along said dividing line 125 feet;
thence 88) northerly on a curve to the left hav-
ing a radius of 740.90 feet, an arc distance of
80.72 feet to the dividing line between lots
#21 and #22 in Block 164-C on the map hereinafter mentioned and running
thence 89) south 67 degrees 5 minutes 55 se-
conds east along said dividing line 125 feet;
thence 90) northerly on a curve to the left hav-
ing a radius of 740.90 feet, an arc distance of
80.72 feet to the dividing line between lots
#21 and #22 in Block 164-C on the map hereinafter mentioned and running
thence 91) south 67 degrees 5 minutes 55 se-
conds east along said dividing line 125 feet;
thence 92) northerly on a curve to the left hav-
ing a radius of 740.90 feet, an arc distance of
80.72 feet to the dividing line between lots
#21 and #22 in Block 164-C on the map hereinafter mentioned and running
thence 93) south 67 degrees 5 minutes 55 se-
conds east along said dividing line 125 feet;
thence 94) northerly on a curve to the left hav-
ing a radius of 740.90 feet, an arc distance of
80.72 feet to the dividing line between lots
#21 and #22 in Block 164-C on the map hereinafter mentioned and running
thence 95) south 67 degrees 5 minutes 55 se-
conds east along said dividing line 125 feet;
thence 96) northerly on a curve to the left hav-
ing a radius of 740.90 feet, an arc distance of
80.72 feet to the dividing line between lots
#21 and #22 in Block 164-C on the map hereinafter mentioned and running
thence 97) south 67 degrees 5 minutes 55 se-
conds east along said dividing line 125 feet;
thence 98) northerly on a curve to the left hav-
ing a radius of 740.90 feet, an arc distance of
80.72 feet to the dividing line between lots
#21 and #22 in Block 164-C on the map hereinafter mentioned and running
thence 99) south 67 degrees 5 minutes 55 se-
conds east along said dividing line 125 feet;
thence 100) northerly on a curve to the left hav-
ing a radius of 740.90 feet, an arc distance of
80.72 feet to the dividing line between lots
#21 and #22 in Block 164-C on the map hereinafter mentioned and running
thence 101) south 67 degrees 5 minutes 55 se-
conds east along said dividing line 125 feet;
thence 102) northerly on a curve to the left hav-
ing a radius of 740.90 feet, an arc distance of
80.72 feet to the dividing line between lots
#21 and #22 in Block 164-C on the map hereinafter mentioned and running
thence 103) south 67 degrees 5 minutes 55 se-
conds east along said dividing line 125 feet;
thence 104) northerly on a curve to the left hav-
ing a radius of 740.90 feet, an arc distance of
80.72 feet to the dividing line between lots
#21 and #22 in Block 164-C on the map hereinafter mentioned and running
thence 105) south 67 degrees 5 minutes 55 se-
conds east along said dividing line 125 feet;
thence 106) northerly on a curve to the left hav-
ing a radius of 740.90 feet, an arc distance of
80.72 feet to the dividing line between lots
#21 and #22 in Block 164-C on the map hereinafter mentioned and running
thence 107) south 67 degrees 5 minutes 55 se-
conds east along said dividing line 125 feet;
thence 108) northerly on a curve to the left hav-
ing a radius of 740.90 feet, an arc distance of
80.72 feet to the dividing line between lots
#21 and #22 in Block 164-C on the map hereinafter mentioned and running
thence 109) south 67 degrees 5 minutes 55 se-
conds east along said dividing line 125 feet;
thence 110) northerly on a curve to the left hav-
ing a radius of 740.90 feet, an arc distance of
80.72 feet to the dividing line between lots
#21 and #22 in Block 164-C on the map hereinafter mentioned and running
thence 111) south 67 degrees 5 minutes 55 se-
conds east along said dividing line 125 feet;
thence 112) northerly on a curve to the left hav-
ing a radius of 740.90 feet, an arc distance of
80.72 feet to the dividing line between lots
#21 and #22 in Block 164-C on the map hereinafter mentioned and running
thence 113) south 67 degrees 5 minutes 55 se-
conds east along said dividing line 125 feet;
thence 114) northerly on a curve to the left hav-
ing a radius of 740.90 feet, an arc distance of
80.72 feet to the dividing line between lots
#21 and #22 in Block 164-C on the map hereinafter mentioned and running
thence 115) south 67 degrees 5 minutes 55 se-
conds east along said dividing line 125 feet;
thence 116) northerly on a curve to the left hav-
ing a radius of 740.90 feet, an arc distance of
80.72 feet to the dividing line between lots
#21 and #22 in Block 164-C on the map hereinafter mentioned and running
thence 117) south 67 degrees 5 minutes 55 se-
conds east along said dividing line 125 feet;
thence 118) northerly on a curve to the left hav-
ing a radius of 740.90 feet, an arc distance of
80.72 feet to the dividing line between lots
#21 and #22 in Block 164-C on the map hereinafter mentioned and running
thence 119) south 67 degrees 5 minutes 55 se-
conds east along said dividing line 125 feet;
thence 120) northerly on a curve to the left hav-
ing a radius of 740.90 feet, an arc distance of
80.72 feet to the dividing line between lots
#21 and #22 in Block 164-C on the map hereinafter mentioned and running
thence 121) south 67 degrees 5 minutes 55 se-
conds east along said dividing line 125 feet;
thence 122) northerly on a curve to the left hav-
ing a radius of 740.90 feet, an arc distance of
80.72 feet to the dividing line between lots
#21 and #22 in Block 164-C on the map hereinafter mentioned and running
thence 123) south 67 degrees 5 minutes 55 se-
conds east along said dividing line 125 feet;
thence 124) northerly on a curve to the left hav-
ing a radius of 740.90 feet, an arc distance of
80.72 feet to the dividing line between lots
#21 and #22 in Block 164-C on the map hereinafter mentioned and running
thence 125) south 67 degrees 5 minutes 55 se-
conds east along said dividing line 125 feet;
thence 126) northerly on a curve to the left hav-
ing a radius of 740.90 feet, an arc distance of
80.72 feet to the dividing line between lots
#21 and #22 in Block 164-C on the map hereinafter mentioned and running
thence 127) south 67 degrees 5 minutes 55 se-
conds east along said dividing line 125 feet;
thence 128) northerly on a curve to the left hav-
ing a radius of 740.90 feet, an arc distance of
80.72 feet to the dividing line between lots
#21 and #22 in Block 164-C on the map hereinafter mentioned and running
thence 129) south 67 degrees 5 minutes 55 se-
conds east along said dividing line 125 feet;
thence 130) northerly on a curve to the left hav-
ing a radius of 740.90 feet, an arc distance of
80.72 feet to the dividing line between lots
#21 and #22 in Block 164-C on the map hereinafter mentioned and running
thence 131) south 67 degrees 5 minutes 55 se-
conds east along said dividing line 125 feet;
thence 132) northerly on a curve to the left hav-
ing a radius of 740.90 feet, an arc distance of
80.72 feet to the dividing line between lots
#21 and #22 in Block 164-C on the map hereina



ShopRite Corn
REG. OR NO SALT WHOLE KERNEL, CREAM OR VAC PACK (12-OZ.)
4.99
1-lb. cans



ShopRite Tomato Sauce
4.99
15-oz. cans



ShopRite Bleach
LIQUID
.49
1-gal. btl.



ShopRite Peanut Butter
CREAMY OR CHUNKY
.99
1-lb. 2-oz. jar

ShopRite Brand Sale!



Look For Our New Color Circular
If you have not received a copy in the mail or in your local newspaper, pick one up at your nearby ShopRite while supplies last.

Premium 10W/30 or 10W/40 ShopRite Motor Oil 1-qt. can **.69**

Thrifty Wizard in Beige, Taupe or Nude, Where Avail. ShopRite Knee Hi's 2-pk. pkgs. **2\$1**

Reg. or Wintergreen ShopRite Alcohol 16-oz. btl. **2\$1**

Regular or Lime ShopRite Shave Cream 11-oz. can **.89**

"ORANGE YOU SMART" 100% PURE ShopRite Orange Juice 64-oz. cart. **1.29**

U.S.D.A. GRADE 'A' ShopRite Medium Eggs doz. **.59**

Apple, Apple Crunch, Coc. Custard, Lemon Meringue or Choc. Boston Creme ShopRite 8" Pies 20-oz. box **1.19**

Regular or Krinkle ShopRite Potato Chips 11-oz. bag **.99**

Grade 'A' Cut Corn, Peas & Carrots, Peas or Mixed Vegetables ShopRite Vegetables 24-oz. bag **.99**

Why Pay More? ShopRite Apple Juice 16-oz. can **.79**

Why Pay More? ShopRite Cheese Pizza 16-oz. pkg. **1.29**

Store Sliced American ShopRite Cheese lb. **1.99**

Reg., Maple or Thick ShopRite Sliced Bacon 1-lb. pkg. **1.29**

Dinner, Meat or Beef ShopRite Franks 1-lb. can **1.19**

Chunks, Crushed, Sliced or Spears in Natural Juice Hawaiian ShopRite Pineapple 1-lb. 4-oz. can **.69**

Why Pay More? ShopRite Tea Bags 100-ct. box **1.29**

3-PLY ShopRite Trash Bags 40-ct. box **2.99**

Very Soft White or Yellow, 2-PLY ShopRite Towels 90-ct. roll **.59**

Assorted or White ShopRite Napkins 250-ct. box **.89**

LG (48-CT) or Med. with Gathers ShopRite Diapers 54-ct. bag **5.99**

The ShopRite Quality Assurance Team
ShopRite maintains a staff of food scientists to constantly evaluate products deemed good enough to wear the ShopRite label. They test, probe, sample and evaluate at the packing plants, at our warehouses and with mobile laboratory vans, even at the stores. Our Quality Assurance Team is your assurance of the final quality product: processed, packed and handled in a safe and sanitary manner.

In Oil or Water ShopRite Chunk Light ShopRite Tuna 6 1/2-oz. can **.49**

All Varieties, Regular or Somethin' Lite ShopRite Salad Dressing 1-pt. btl. **.89**

Why Pay More? ShopRite Sauerkraut 4 1-lb. cans **4.99**

All Varieties, Reg., Diet or Somethin' Lite ShopRite Sodas PLUS DEP. WHERE REQ. 2-lb. btl. **.59**

Seltzer or ShopRite Club Soda PLUS DEP. WHERE REQ. 1-pt. 12 oz. btl. **4.99**

New at ShopRite! ShopRite Lemon Juice 1-qt. btl. **.69**

Orange Marmalade, Grape Preserves or ShopRite Grape Jelly 2-lb. jar **.89**

The MEATing Place

U.S.D.A. CHOICE BEEF Boneless Bottom Round Roast lb. **1.49**

BONELESS BEEF U.S.D.A. CHOICE ANY SIZE PKG., NOT LESS THAN 85% Ex. Lean Ground Beef lb. **1.79**

U.S.D.A. CHOICE BONELESS BEEF FOR SWISSING Bottom Round Steak lb. **1.79**

TOBIN'S FRESH CENTER CUT FROZEN, SKINNED & DEVEINED Sliced Beef Liver lb. **.79**

VEAL, CHICKEN OR ITALIAN FROZEN Our Best Patties lb. **.99**

U.S.D.A. CHOICE BEEF Eye Round Roast lb. **1.79** WITH BOTTOM ATTACHED

FRESH GRADE 'A' Concord Ducks lb. **.99**

BY THE PIECE, LIVERWURST OR Kellers Bologna lb. **.99**

HOLLY FARMS, GRADE 'A' JUMBO PAK WHOLE WITH HIGHS Chicken Legs lb. **.89**

HOLLY FARMS, GRADE 'A' JUMBO PAK Chicken Drumsticks lb. **.89**

HOLLY FARMS, GRADE 'A' JUMBO PAK Chicken Thighs lb. **.99**

HOLLY FARMS, GRADE 'A' JUMBO PAK Chicken Wings lb. **.69**

The Fish Market

U.S. GRADE 'A' NEW ENGLAND Fresh Fillet of Scrod Cod* lb. **1.89**

U.S. GRADE 'A' (BOSTON BLUE) Fresh Pollock Fillet* lb. **1.39**

The Dairy Place

WHY PAY MORE? Philadelphia Cream Cheese 8-oz. pkg. **.89**

ASSORTED FLAVORS Breyers Yogurt 2 6-oz. conts. **.89**

The Frozen Food Place

LARGE ROUND CHEESE Buftoni Ravioli 1/2 PRICE SAVE 85% 11-oz. pkg. **.84**

ASSORTED FLAVORS Flavor King Ice Cream 1/2 gal. cart. **1.39**

The Appy Place

STORE SLICED Turkey Breast lb. **3.99**

ARMOUR Stick Pepperoni lb. **3.59**

The Grocery Place

REGULAR OR NATURAL Speas Farm Apple Juice 1/2-gal. btl. **.99**

ALL VARIETIES Scott Paper Towels 119-ct. roll **.69**

WHY PAY MORE? Mazola Corn Oil 1-gal. cont. **5.49**

SPAGHETTI, CAPPELLINI, ELBOWS, RIGATONI, BUTTERFLY, LINGUINE OR SCHIUMI MELON D'Amelia Pasta 3 1-lb. pkgs. **1.00**

PILUM Montini Tomatoes 2-lb. 3-oz. can **.79**


RC 100, REG. OR DIET (PLUS DEP. WHERE REQ.) RC or Diet Rite 2-lb. btl. **.99**

RIENZI IMPORTED ITALIAN Tomato Sauce 6 8-oz. cans **1.00**

BRICK PAK COFFEE Chock Full O'Nuts 1-lb. pkg. **1.89**

ShopRite Coupon
WITH THIS COUPON ONE (1) 1.1L BTL OF
Diet Coke, Coke or Tab
1.49
Coupon good at any ShopRite Market. Limit one per family. Effective Sun. Apr. 14 thru Sat. Apr. 20, 1985.

ShopRite Coupon
WITH THIS COUPON ONE (1) 12 OZ. BOX OF KEEBLER
Townhouse Crackers
.99
Coupon good at any ShopRite Market. Limit one per family. Effective Sun. Apr. 14 thru Sat. Apr. 20, 1985.



Senior Citizen Discount Policy
Sixty-Two or older...You are welcome to save a full 10% Off our regular Low Prescription prices. No involved applications to fill out. Simply present proof of age and we will immediately issue a Golden Age Discount Card that can be used with your first purchase.

This card is for prescription purposes only and is not applicable to P.A.A. or Third Party Prescriptions.

| | |
|---|--|
| Answer 2 At-Home Early Pregnancy Test Kit (contains 2 Complete Tests) \$8.99 -1.00-mfg. rebate 7.99-your cost after rebate | B-D Autolance Device \$8.99 -4.00-mfg. rebate 4.99-your cost after rebate |
| Early Detector In-Home Test To Detect Blood in Stool \$4.99 -2.00-mfg. rebate 2.99-your cost after rebate | B-D Lancets \$4.99 |
| Sharp Digital Fever Thermometer \$7.99 | Bristoline Manual Blood Pressure Kit #1535 \$10.99 |
| | Visidex II \$12.99 |
| | Tes-Tape \$4.59 |

Expires April 25, 1985

In order to assure a sufficient supply of sales items for all our customers, we must reserve the right to limit the purchase of items or any sales items, except where otherwise noted. Not responsible for typographical errors. Prices effective Sun. Apr. 14 thru Sat. Apr. 20, 1985. None sold to other retailers or wholesalers. Artwork does not necessarily represent item on sale. It is for display purposes only. Copyright WAKETERN FOOD CORPORATION 1985.

**Rev. G. Fortunato installed
as pastor at baptist church**
- see page 2

**Library's indoor art show
attracts a variety of artists**
- see pictures on page 8

**Middle school librarian
makes reading interesting**
- see page 12

The Belleville Times

Serving Belleville Since 1909

Thursday, April 25, 1985

35¢

Cherry Blossom Run set for Sunday

The Cherry Blossom Run will be conducted Sunday, April 28 at 10 a.m. across from the Branch Brook Arena.

The event, sponsored by Blue Cross and Blue Shield of New Jersey and the Essex County Department of Parks, Recreation and Cultural Affairs, is sanctioned by the New Jersey Athletics Congress.

For information on the event, call the Essex County Department of Parks, Recreation and Cultural Affairs at 482-6400.

Awards will be given to the top three finishers in each of seven categories: 14 and under, 15-19, 20-29, 30-39, 40-49, 50-59 and 60 and over. More than 1500 people are expected to compete for trips, gift certificates and appliances.

Race packets will be available Friday, April 26, 9 a.m.-8 p.m. and Saturday, April 27, 9 a.m.-4 p.m. at Branch Brook Park Tennis Building on Heller Parkway.

Guidance office open extra hours

The Belleville High School Guidance Office will be open over the dinner hour, until 7 p.m., four days in May.

The office will be open the following days: Wednesday, May 1, Miss Hereick and Miss Williamson; Wednesday, May 8, Mr. Kennedy and Mr. Esposito; Tuesday, May 14, Mr. Cafone and Miss Williamson; Tuesday, May 21, Miss Candiloro and Dr. Benninger.

The Scholastic Awards Buffet will take place Wednesday, May 29.

Computer committee is approved

The board of education approved staff members to reconvene the K-6 Computer Curriculum Committee.

The staff, comprised of two supervisors and 12 teachers, will conduct four two-hour sessions beginning this month and ending June 30.

The committee is as follows: Michael Lemongello, chairperson, and Paula Cummis, supervisors; Catherine Chirico, Florence Conway, Susan DiRuggiero, Helen Persko, Isabelle Giordano, Mary Bradley, Joan Lilioia, Natalie Milano, Josephine Montemurro, Cynthia Richter, Diane Fortino and Louis Scanzillo, teachers.

Business community discusses plans for redevelopment at special meeting

By Michelle Jeannotte

A meeting last week on the redevelopment of Washington Avenue only produced more questions and more answers.

The meeting, sponsored by the chamber of commerce, gave members of the business community a chance to ask questions

concerning their properties on Washington Avenue.

The only outburst from the audience came even before the meeting began when Michael Giordano, a homeowner, yelled out to the panel that they were "perpetrating a public fraud."

Giordano said that he had a

right to be heard and that homeowners should have been allowed to attend the meeting. He was eventually escorted out of the building by police.

The panel, consisting of redevelopment agency members Gabe Nazzola, Emil Nardachone and Joseph Dasaro and revitalization committee members William Cameron, Vincent Frantantoni and Louis Cicenia, responded to questions concerning the meaning of blight, the possibility of relocation, costs and the future plans for Washington Avenue.

Much of the opposition from members of the audience concerned the word "blight."

Cicenia, owner of Charles Jewelers, said the word blight will have a stagnant effect on the community and that the value of property will be destroyed.

He referred to businesses in the concerned area, such as Garden State Pet Supplies and Garden State Farm, that would be affected if blight was declared.

"Once blight is declared, the blight zone will spread," he said. "It will only affect other businesses and cause an economic uncertainty."

Joseph Dasaro, a member of

the redevelopment agency, said that the word blight is only a mechanism in which the township can obtain total authority (eminent domain) over the redevelopment of the avenue.

"We want to get away from a piece meal approach," he said. "The township already has authority. We are only an agent of the commissioners. If blight is declared we can assemble large blocks of land for redevelopment. Developers don't want to come in unless they know the land is available."

He added that larger areas of land would more likely attract developers.

"People seem to forget this town is not a metropolis," William Cameron, a Quinton Street resident, said. "People aren't moving in and out. Some people have been here a long time. There is no substantial evidence for blight."

"Blight is not really the issue," Joseph Dasaro said. "We are concentrating on the underutilization of land on the avenue and that condition does exist. We have taken steps to eliminate the word blight from the statute."

Vincent Frantantoni cited a

(Please see page 4)



Blight Opposition - Vincent Frantantoni, center, addresses the audience during a meeting in which members of the business community had a chance to ask questions concerning the redevelopment of Washington Avenue. With Frantantoni are William Cameron (left), a Quinton Street resident, and Louis Cicenia, owner of Charles Jewelers. All are members of the Belleville Revitalization Committee which supports redevelopment without blight.

Board of education approves third phase of a program focused on marching band

By Michelle Jeannotte

The school board approved a third phase of a program Monday night geared to improving the quality of the Belleville High School Marching Band.

The three-phase program, presented by Assistant Schools Superintendent Michael Lally, was introduced to the school board two years ago. The overview of the program was prepared by Frank Scelba, director of performing arts at the high school.

Phase I of the program consisted of a reorganization of the advisers and staff. A drill instructor, choreographer and percussion instructor were implemented into the program, Lally said.

The purpose of a drill instructor is to teach the band and squads sophisticated corps style marching techniques of maintaining correct form, posture and speed during execution of the drill, Lally said. The band and squads are taught the fun-

damentals of marching as well as the marching and maneuvering part of the show.

The percussion instructor's duties include teaching the percussion section of the band all musical numbers which would be performed during half-time shows at football games.

Both instructors will be working with the band and squads during the band camp conducted at the high school the last week in August (Aug. 26-30 this year). Additional practice will be conducted Monday, Tuesday and Thursday nights during the football season.

The positions of drill and percussion instructor are now vacant as well as the position of flag and rifle adviser. All three have been posted throughout the district, Schools Superintendent Michael Nardiello said.

Phase II of the program called for the implementation of a Winterguard, which consists of the marching band's auxiliary

groups. The purpose of this phase, introduced in November of 1984, is to provide additional practice for the squads from December to April. During this time, the squads perfect their routines and tests them in interschool competitions.

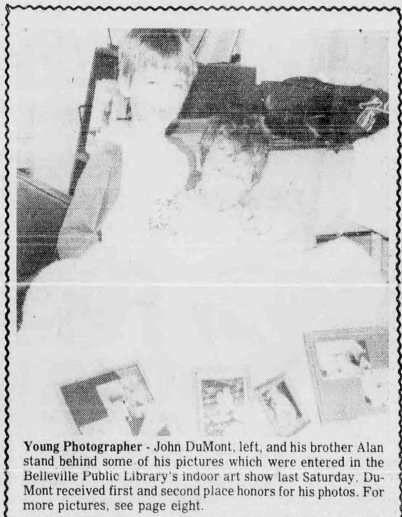
This phase of the program has proved to be a success. Illusions, the Belleville flag and rifle squad, recently received first place honors in only its second competition. The squad, comprised of 14 members, received second place honors in its first competition held in March.

The squad, which practices at School 8 Monday and Friday

nights and at the high school on Saturdays, will be giving a special performance at the school board's May 6 meeting.

Phase III, which the board approved Monday night, provides the marching band and squads with additional practice time at an overnight marching band camp Sept. 6, 7 and 8, Lally said.

Members of the band will be taught marching band fundamentals and routines at Camp Bernie, a YMCA camp in Port Murray. The \$4,300 cost of the overnight camp will be provided through various fund-raising projects, Lally said.



Young Photographer - John DuMont, left, and his brother Alan stand behind some of his pictures which were entered in the Belleville Public Library's indoor art show last Saturday. DuMont received first and second place honors for his photos. For more pictures, see page eight.

Matters in Brief

Festival highlights Italian heritage

The 1985 Festa Italiana, scheduled for June 8 and 9, at 7:30 p.m., will feature Enzo Stuarti and his son, Larry Stuarti, and comedienne Kaye Ballard.

Ticket information can be obtained through local Italian-American associations, the Garden State Arts Center and Ticketron. Tickets reservations can be made by calling Al Vecchione at 759-2822 or Chris Albanese at 759-3314.

Festa Italiana, the only ethnic festival at the Arts Center in Holmdel that spans two days, has been in the planning stages for months, John Gatto, chairman, said.

Proceeds will go to the Garden State Cultural Fund to insure the participation of senior citizen groups and the handicapped in all its programs and also to a scholarship fund for students of Italian-American descent.

Kelly to receive mental health award

The Board of Trustees of Community Mental Health Services for Belleville, Bloomfield and Nutley has selected John V. Kelly of Nutley to be the recipient of its 1985 Mental Health Award.

The award will be presented to Kelly Friday, May 10 at The Chandelier on Franklin Avenue in Belleville.

Persons interested in joining community leaders, mental health professionals, and friends in honoring Kelly can call the agency at 450-3100 for more information and reservations.

Community Mental Health Services has instituted this award to be presented each May during mental health month to an individual in the community who has demonstrated outstanding support of mental health. Kelly has been selected as the first recipient of the award for his continued interest in mental health agencies and community programs.

As president of Nutley Savings and Loan and as a civic leader, he has supported numerous fund-raising efforts through his personal generosity and his loan of the bank facility for fund-raising events.